

# FRANCE

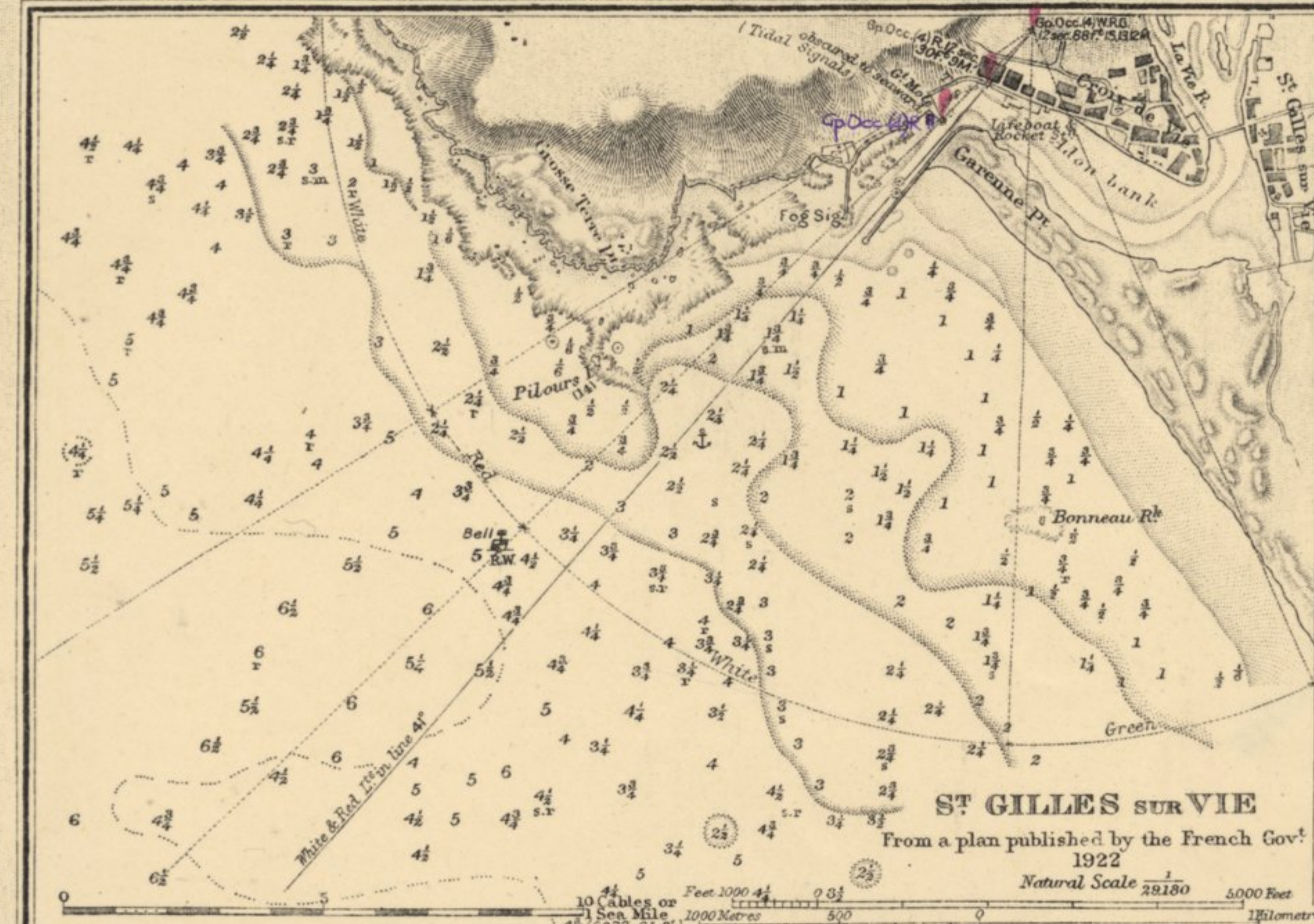
## WEST COAST

### SHEET IV

#### LES SABLES D'OLONNE TO BOURGNEUF

FROM THE PILOTE FRANCAIS  
With corrections from French Government Charts to 1924.

Lights - Alt. Alternating, F. Fixed, Fl. Flashing, Gp. Group, Occ. Occulting, (U) Unwatched.  
Buoys - B. Black, G. Green, R. Red, W. White, Y. Yellow, Ch. Chopped, H.S. Horizontal Stripes, V.S. Vertical Stripes.  
bck. broken, bl. black, c. coarse, ch. chalk, f. fine, g. gravel, m. mud, pb. pebbles, r. rock, s. sand, sh. shells, st. stones.  
Figures on the land show the heights in feet above H.W. Springs.  
Magnetic Variation in 1927, decreasing about 11' annually.  
All Bearings are True (true 126° etc.) and are given from Seaward.  
SOUNDINGS in FATHOMS  
Reduced approximately to the level of the lowest possible low water.  
Natural Scale 1:125,000 (Lat. 46° 40')



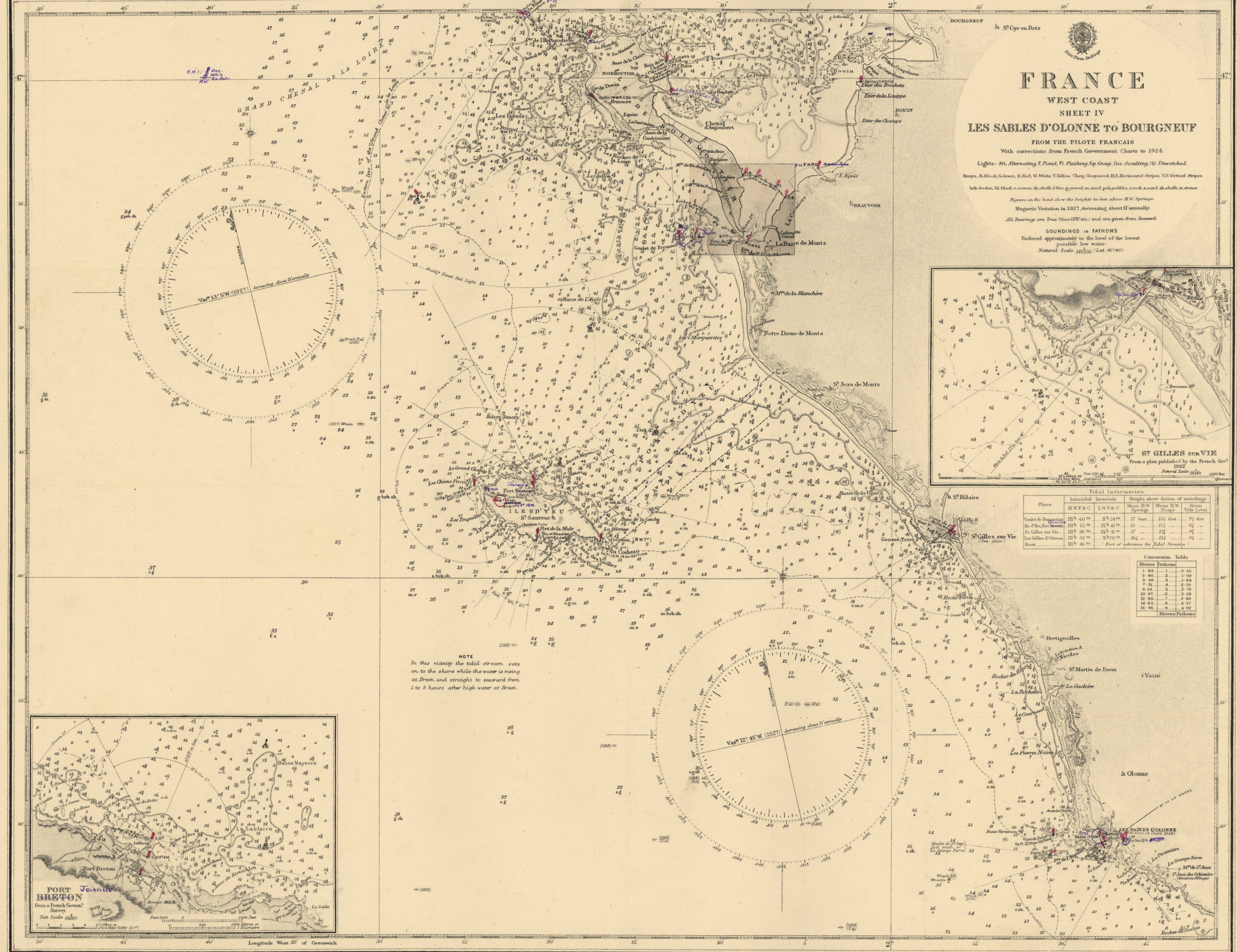
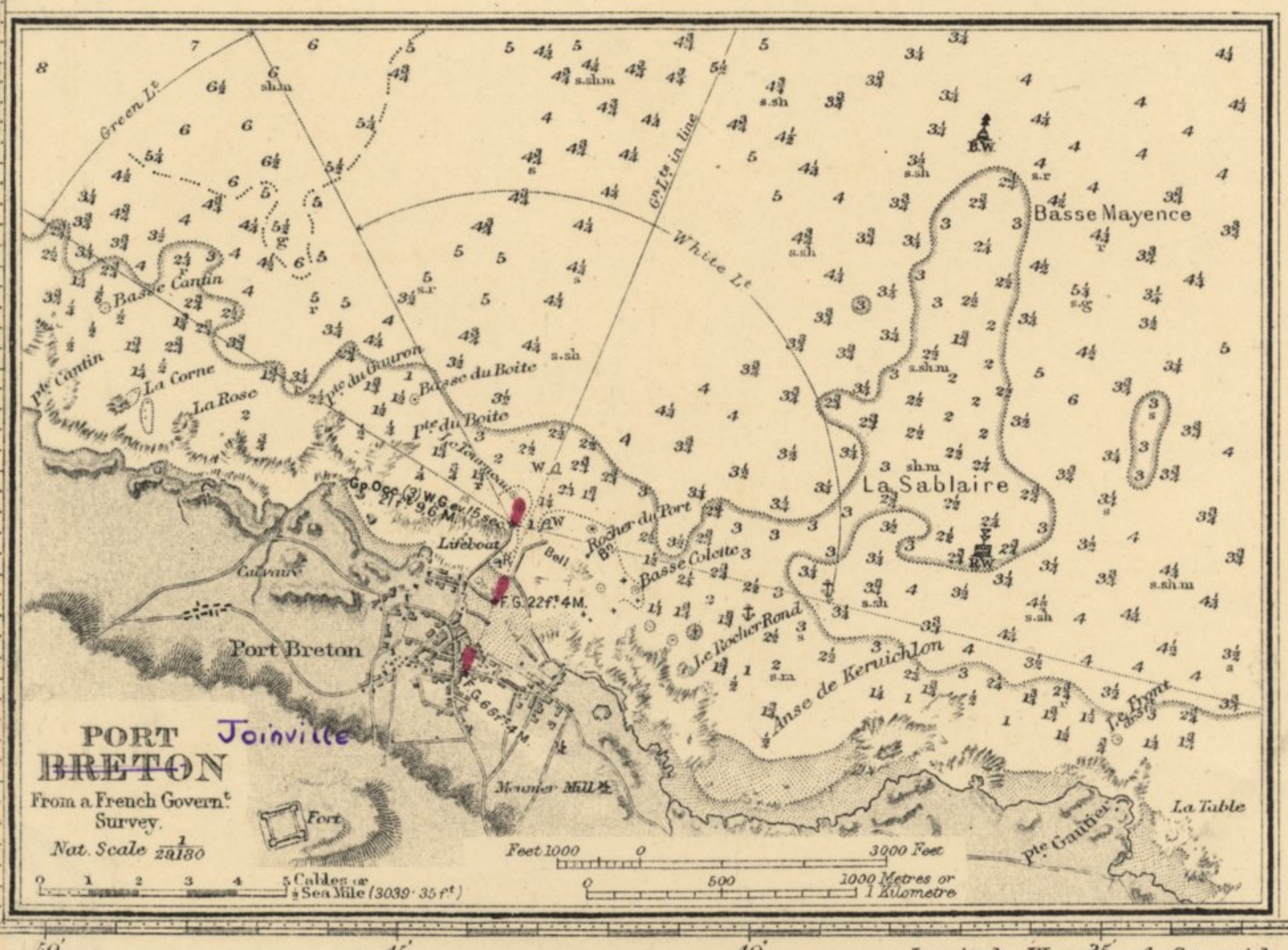
Tidal Information

Place	Lunational Intervals		Height above datum of soundings		
	H.W. & C.	L.W. & C.	Mean H.W. Springs	Mean H.W. Neaps	Mean Tide Level
Goulet de Fréjus	III h 40 m	IX h 24 m	17 feet	13 1/2 feet	9 1/2 feet
St. Gilles sur Vie	III h 15 m	IX h 41 m	15	12 1/2	8 1/2
St. Gilles sur Vie (Sea plan)	III h 36 m	IX h 41 m	17	13 1/2	9 1/2
Les Sables d'Olonne	III h 42 m	X h 03 m	16 1/2	12 1/2	9 1/2
Brest	III h 46 m				

Conversion Table

Metres	Fathoms
1.83	1.0
3.66	2.0
5.49	3.0
7.32	4.0
9.15	5.0
10.98	6.0
12.81	7.0
14.64	8.0
16.47	9.0
18.30	10.0

**NOTE**  
In this vicinity the tidal stream sets on to the shore while the water is rising at Brest, and straight to seaward from 1 to 5 hours after high water at Brest.



CORRECTED TO N. TO M.  
No. 1933 1957  
BP TANKER CO. LTD.  
MARINE DEPT.  
CORRECTED TO N. TO M.  
No. 1690 1955  
BRITISH  
TANKER CO. LTD.

PLUS 333

ISSUED BY  
HELVIA WINNERS (BRAND) LTD.  
CORPORATE MANAGER, LONDON, ENGLAND  
No. 1480 1951

COLECCAO DE M. S. N. A. R. S. T. S.  
9870  
\* CONDE

2647 LES SABLES D'OLONNE to BOURGNEUF  
Price 3/-  
Serial No. 6  
Consecutive N. 81