



MMH

BREVIARIU

ET MISALÆ

PRO

FESTIVITATIBUS

ORDINIS NOSTRI

CARMELITA

RUM



ET MISSA

ORDINIS

REMI



IN VESPERAS

SS. NOMINIS JESU

hymnus

**J** E fudul cis me

móri, a Dañs vera cordi

gaudi a Sed, fuper mel,

& omni a e jusdul cis

præ fénti- a. **N**il càni-



2



tur fu á vi ús Nil audi



turju cúndi us Nil cogi



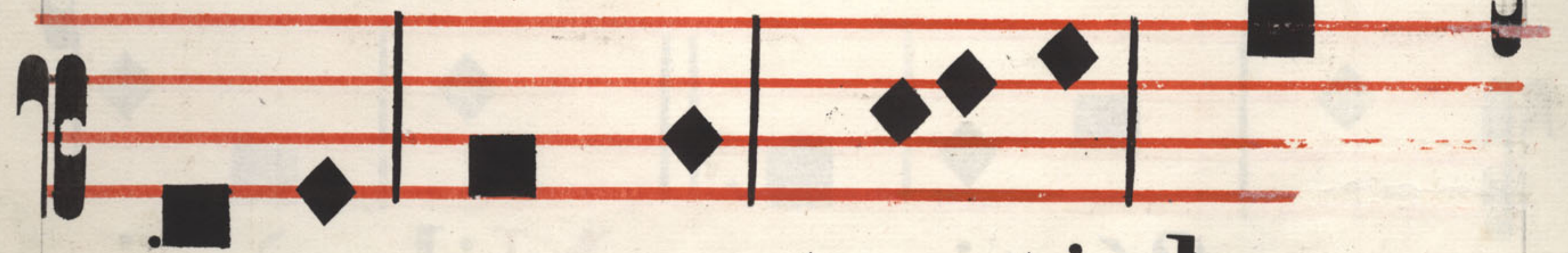
tâ tur dúlci usquám Je=



fus De i Fili us. *Jesu*



spes peni ten ti bus quã



pi us es pe ten ti bus



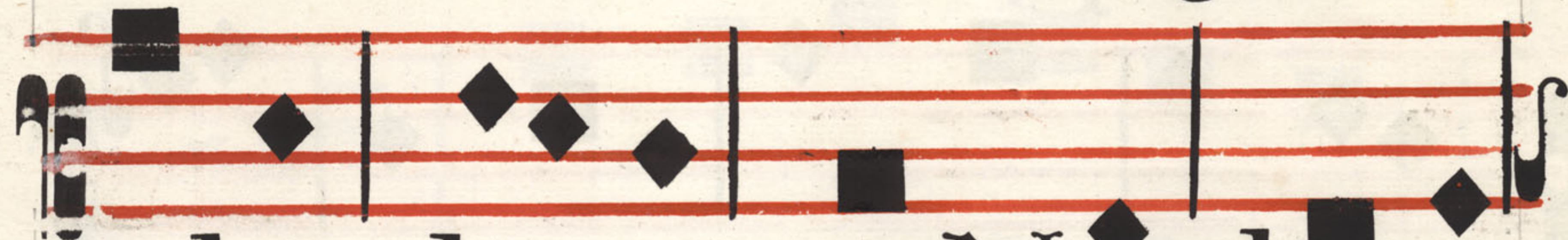
quam bonus te que ren-



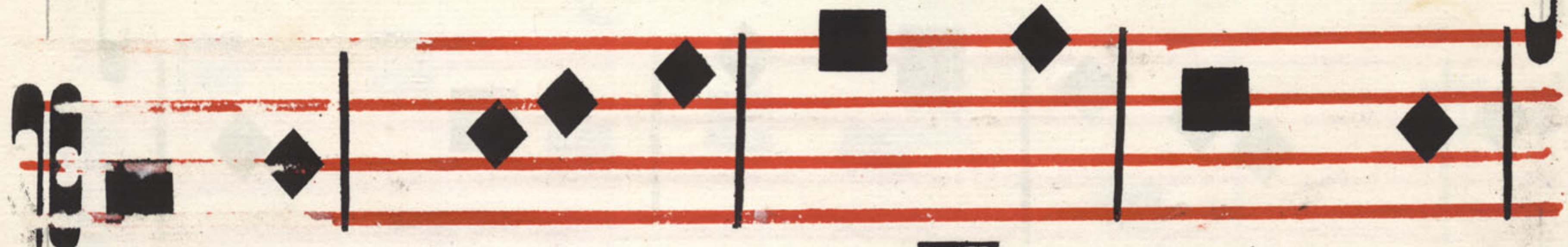
ti bus Sed quid in ve ni-



enti bus. **N**ec lingua



valet di ce: re Nec li te-



ra ex prime re: Ex p'ertus



po test cré de re, quid



fit Je fumde lige re.

Sis Je fu nostrum gáu=

di um, qui es fu tûrus

præmi um, Sit nostra in=

te gló ri a, Per cuncta

semper fecu la.



INFESTO S. P. NOSTER.

JOSEPH CONFESOR.

AD VESPERAS HYMNUS

**T** E, Joseph, céle=  
 brent ágmina Cælitum,  
 Te cuncti réfo nent Chrif  
 tí adum Chori, Qui cla=

The musical notation consists of five systems of two staves each. The notes are square black symbols on red four-line staves. The first system begins with a large red initial 'T' on the left. The second system contains a double bar line followed by a cross symbol 'x' on the first staff. The text is written in a Gothic script below the staves. A circular library stamp is visible in the bottom right corner of the page.



rus méritis, junctus es ín=



chy tæ Caf to foede re



Vír gi ni. **A**l mo cúm tú



midam gérmine cónjugẽ



Admírans, dú bi o tán=



geris ánxius, Afflátu sú=



peri Fláminis Ange lus



Con céptum pú erum



docet. **T**u natum Dómi=



num stríngis, ad éxteras



Ægipti profu gum tu sé=



queris plagas Amíffum





Sólymis quæris, & inve



nis, Mis cens gaudi a flé=



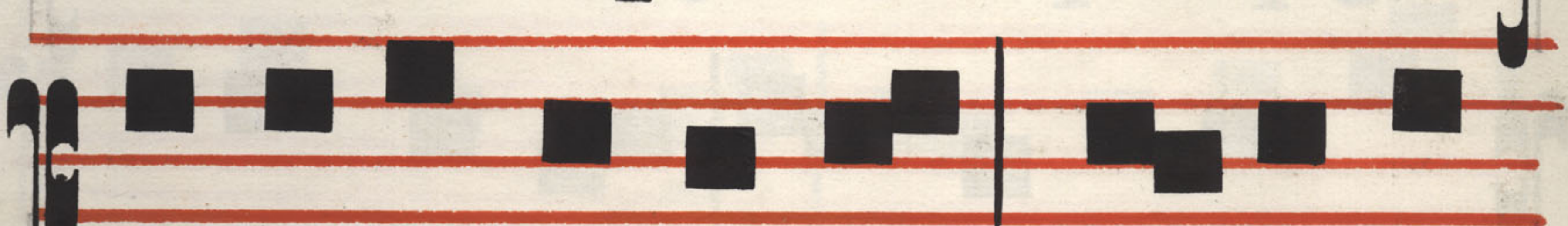
ti bus. **P**ost mortem réli=



quos mors pi a cónfecrat



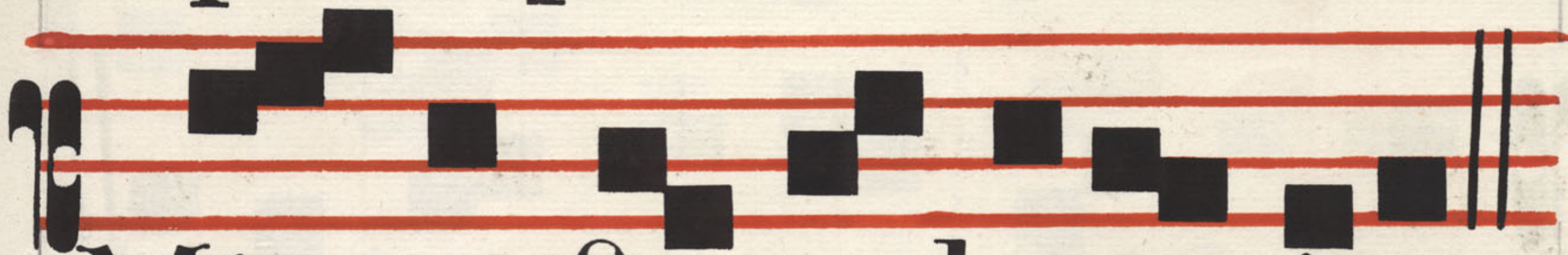
Palmámque eméri tos



glóri a súfcipit: Tu vivens



súperis par,frú e ris De o,



Mi ra for te be a ti or.



**N**o bis, summa Tri as,



parce precántibus, Da Jo



seph méri tis síde ra scán

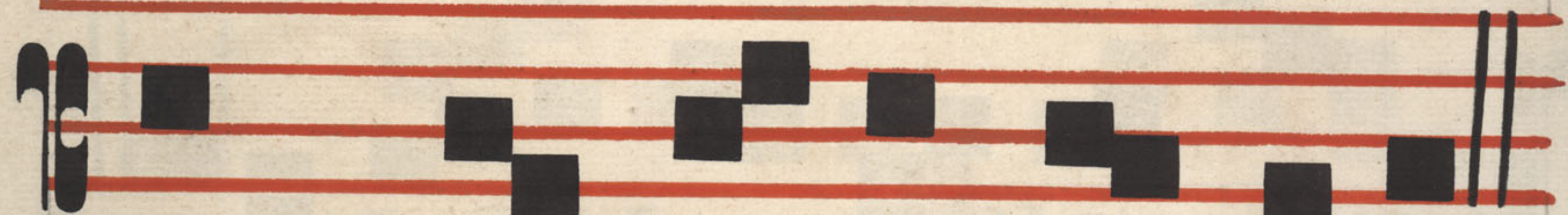


de re: Ut tandem liciat





nos tibi p[er]petim Gra =



tum p[ro] me re c[an]ti cum



A men

*V* Constituit em d[omi]num, domus suae.

*R* Et principem omnis, possessionis suae.

## AD MATUTINUM

Invitatorium



Christum De i



fi li um, qui pu tá ri



dignâ tus est fi li us



Jo seph: \* Ve nî te a =



do rê mus Pf.

**C**



Æ litum Joseph,



decus atque nostræ Cer =



**c**  
b

**c**  
b

**c**  
b

**c**  
b

**c**  
b

**c**  
b

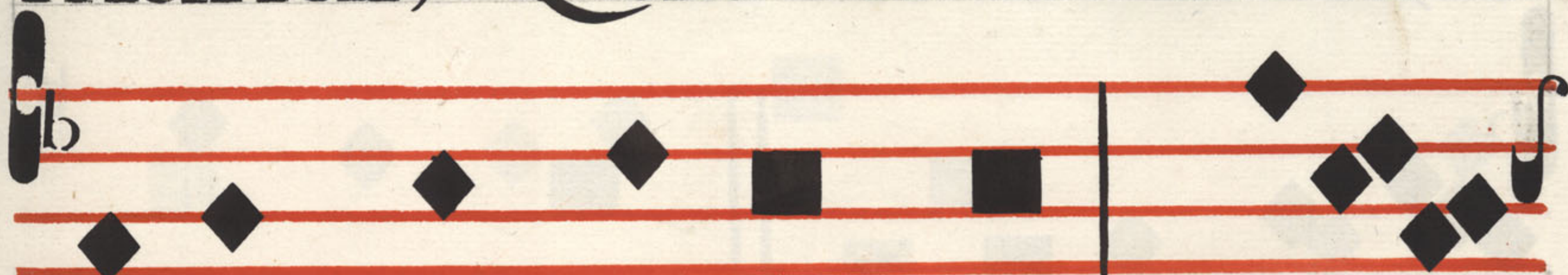




ta spes vitæ, columénque



mundi, Quas tibi læti



cánimus benígnus Suf =



cipe laudes **T**e fator

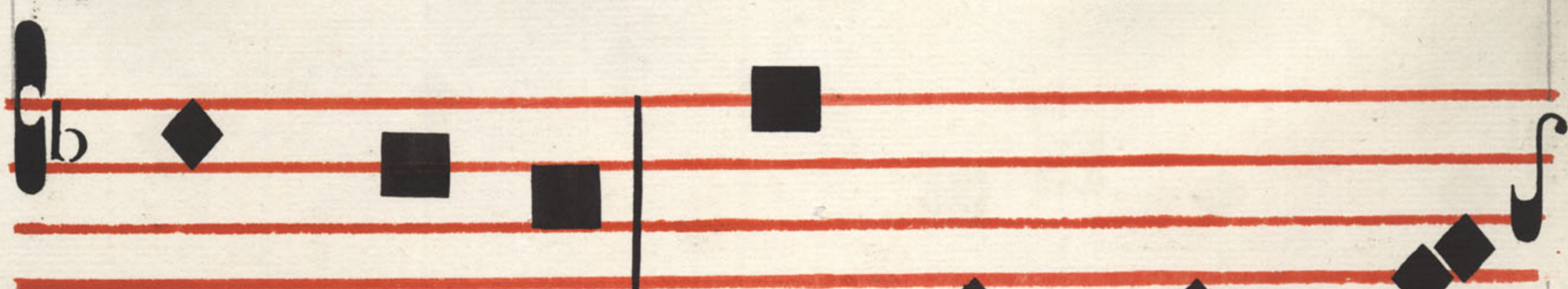


rerum stá tu it pudí cæ



Vírginis sponfum, voluit





que Verbi, Te patrem di-



ci, dedit & ministrum Es-



se salutis. **Tu** Redem-



ptorem stabulo jacentem



Quem chorus Vatum ceci-



nit futurum Aspicis =

gaudens, humilísque na=

tum Nu men adóras.

**R**ex Deus regum Domi

natórorbis, Cujus ad nu=

tum tremit inferôrum

Turbâ qui pro nus famulâ=





tur Æther Se ti =



bi subdit



Laus fit excelsæ trí adi



perénnis, Quæ tibi præ



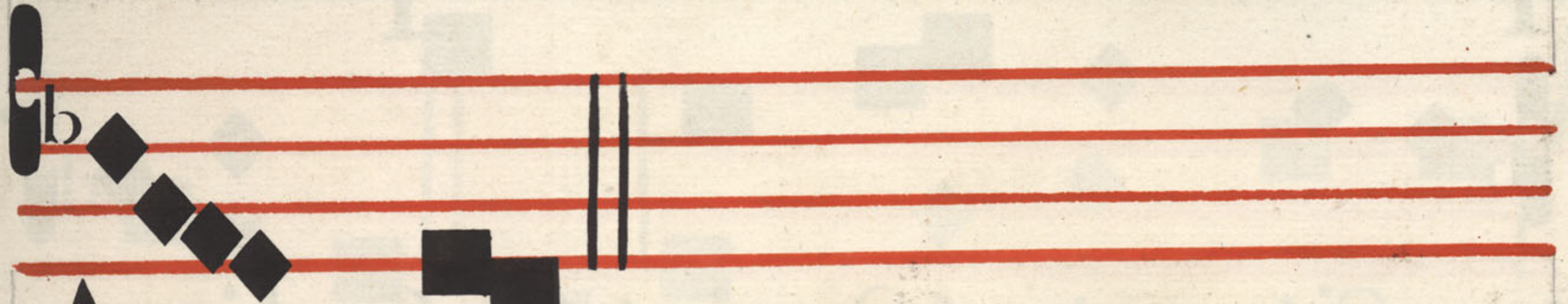
bens sú peros honóres,



Det tuis nobis méritis be

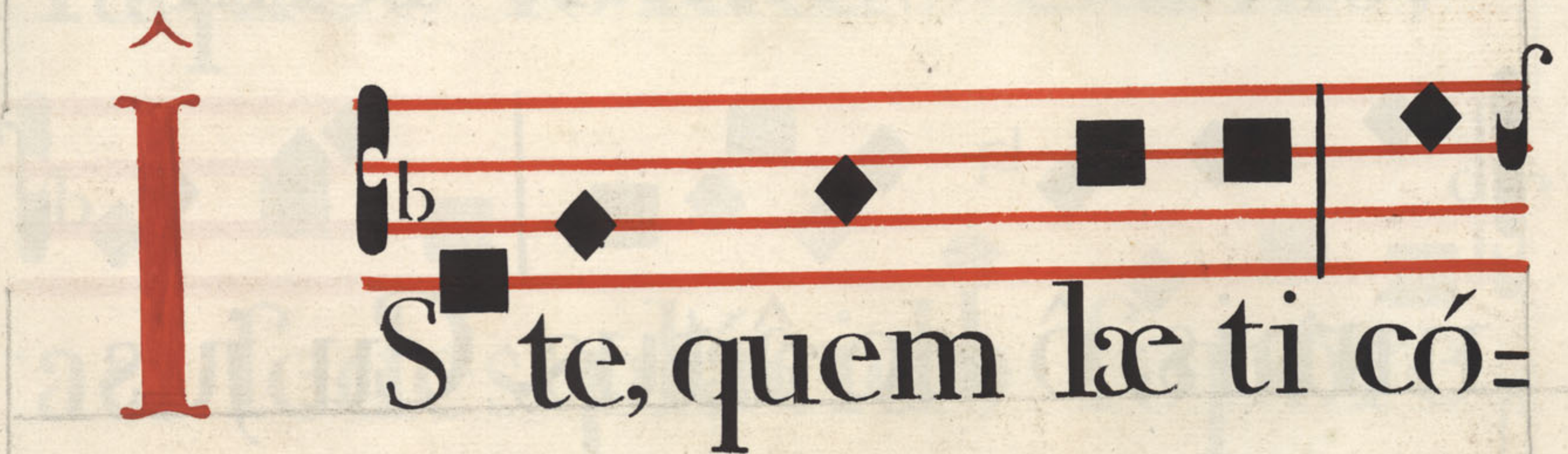


á tæ Gáu di a vi tæ.



A men

## AD LAUDES HIMNUS



S te, quem læ ti có=



limus fidé les, cujus ex=



célfos cánimus triúm=





phos, Hac die, Joseph, mé



ru it pe rénnis Gáudi a =



vi tæ. **O** nimis felix,



nimis, ô be â tus, Cu jus



extrêmam vígiles ad ho =



ram Christus & Virgo



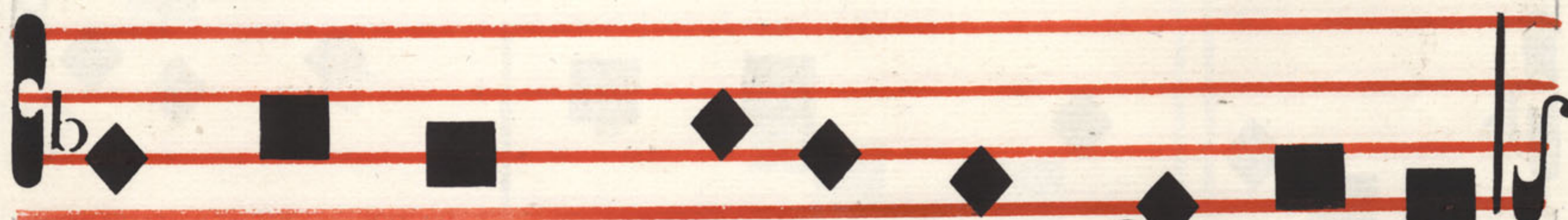
simul astiterunt Ore fe-



ré no **H**inc stygis victor,



lâqueo solutus Carnis,



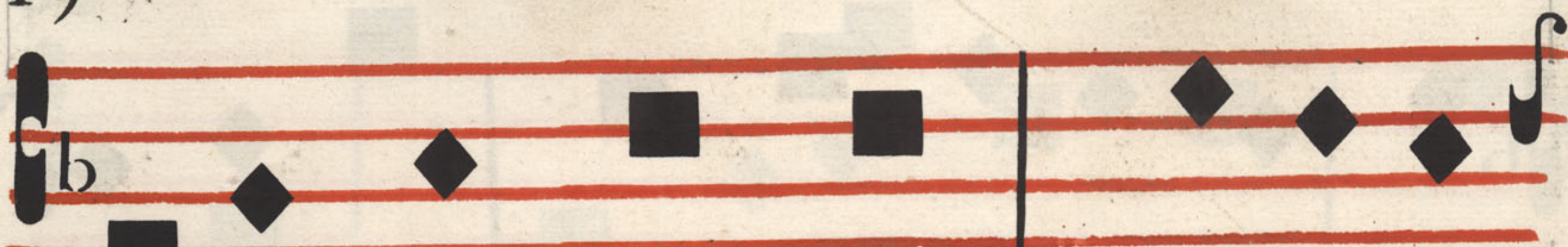
ad sedes placido sopore



Migrat æternas, rutilis =



que cingit Tempora fertis



**E**rgo regnāntem flagitē-



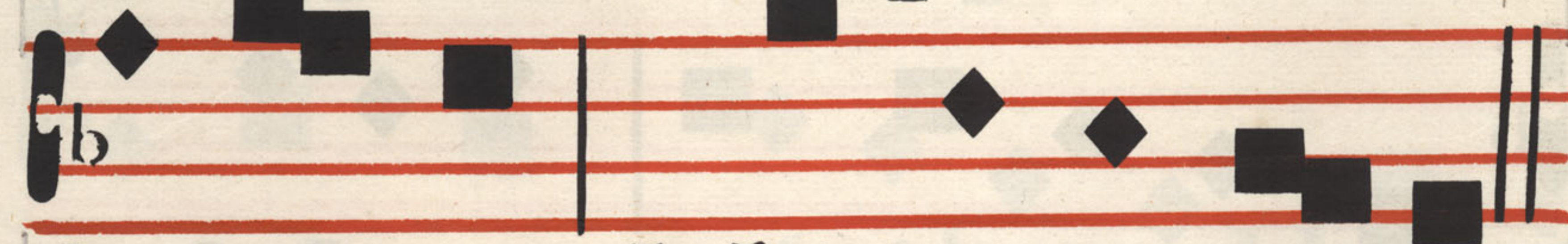
mus omnes, Adfit ut no-



bis, veni amque nostris



Obtine ns culp is tr í bu at



supérnae Mú nera pa cis.



**S**int tibi plausus, tibi fint





honóres, Trine, qui regnas



Deus, & corónas Aureas



fer vo tríbuis fidé li



Omne per æ vum.



A

**V** Os justi, meditabitur sapienciam  
**R** Et lingua ejus, loquetur iudicium



## FESTUM PATROCIN.

S. PATER NOST. JOZE

AD VESPER ASHINUS

**P** Laudant Æthére=  
i fide ra vérticis, Sub=  
dúcti réfo net máchi=  
na pónderis: Dum Pa=

tro cí nium cármine fúp=

pli ces O Jofeph pé ti=

mus tuum. **T**e votis gé ni=

trix alma Terefi a Tutó=

remcólú it noſtra pi íffi

mum Pre ſûris cápiens





tegmen in ómni bus Lar-



go múnere congruum.



**V**exátur rígidis dum cru-



ci á tibus, Et morbis téri-



tur lánguida córporis,



Humá nos médicos fen-



tit inúti les Pror fus im



medi cábi lis. **S**erpit



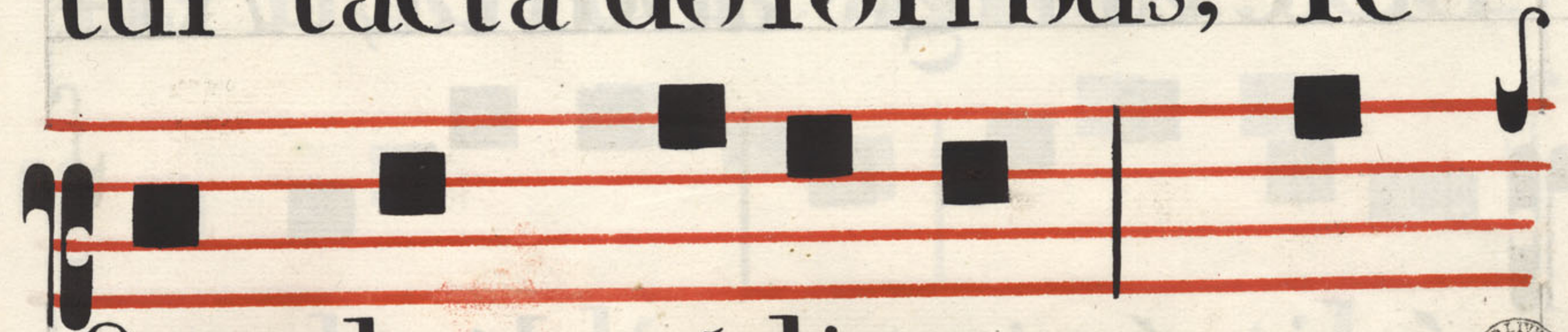
vix génibus dum para ly=



tica Imménfis premi =



tur tacta do lóri bus, Te



supplex médicum quæ

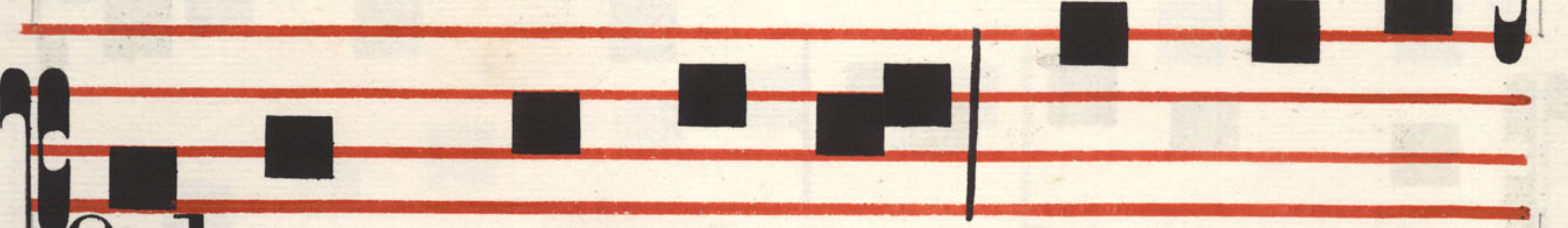




rit, & ínve nit Plusquam



vo ta capéffe rent. **N**on



folúm réperas córporis



órgana: Sed mentis dú=



bi æ dí rigis ábdita; Ar=



cánis ánimæ cæli ca =

myſti cis, Doctor lú mi =

na fúggerens **N**obis, fum

ma Trias, parce precán

tibus, Da Joſeph méri =

tis fíde ra ſcánderé: Ut =

tandem líceat nos tibi =





pérpe tim, Gra tum próme



re cánticum. A men.

## AD MATUTINUM

Invita torium.

**L**

Aude =



mus Deum nos =



trum \* in ve ne rati ô =