



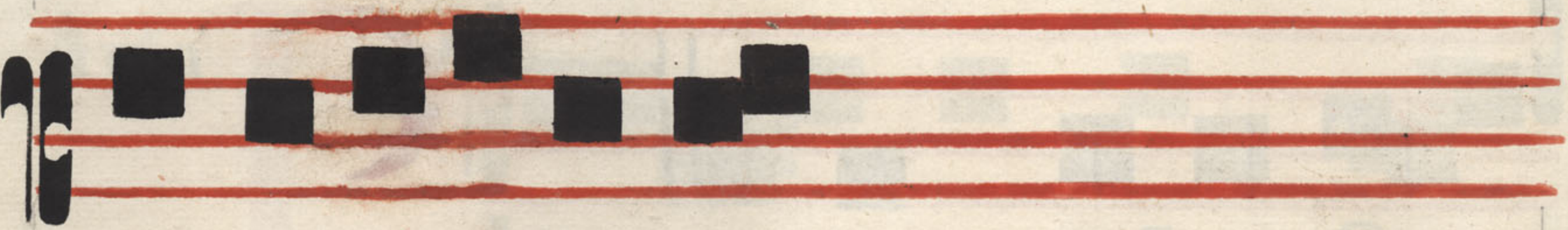
ne, Angelos tu os spi ri=



tus & mi nis tro tu os



i gnem u ren tem.



e. u. o. u. a. e.

Añã



nflam má=



tum est cor meu & cre=



nes me i commuta=



ti fut. e. u. o. u. a. e.

Hym-
nus



RE gis fu pé rni



nún ti a Do =



mum pa tê rnam dé fe=



ris Ter ris Te refa bar=



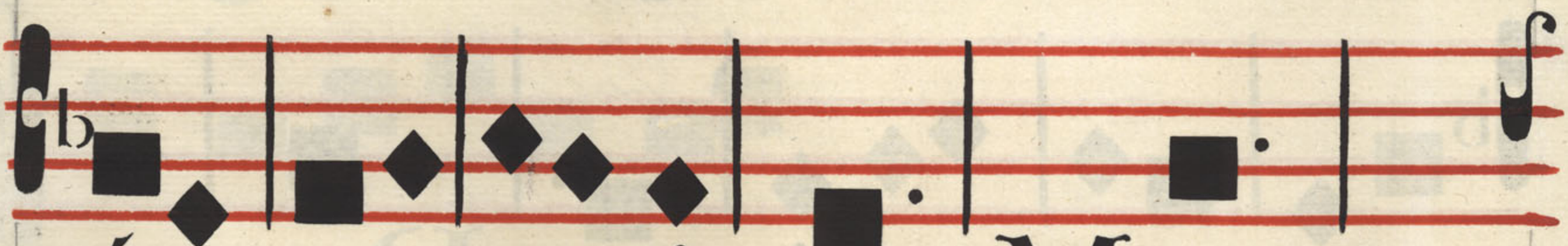
ba ris Chriſ tum da=



tû ra, aut ſân gui=



nem. **S**ed tema net fu=



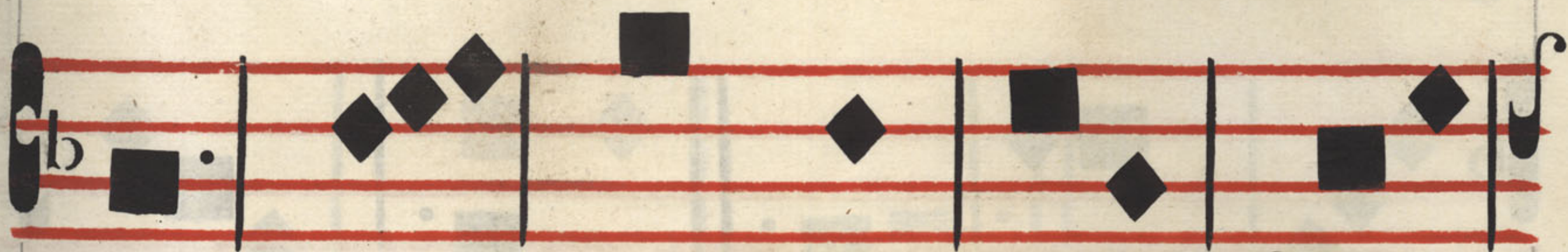
á vi or Mor s,



pœna poſcit dúl ci or:



Di vî ni a môr is cuſpi:



de In vulnus i cta



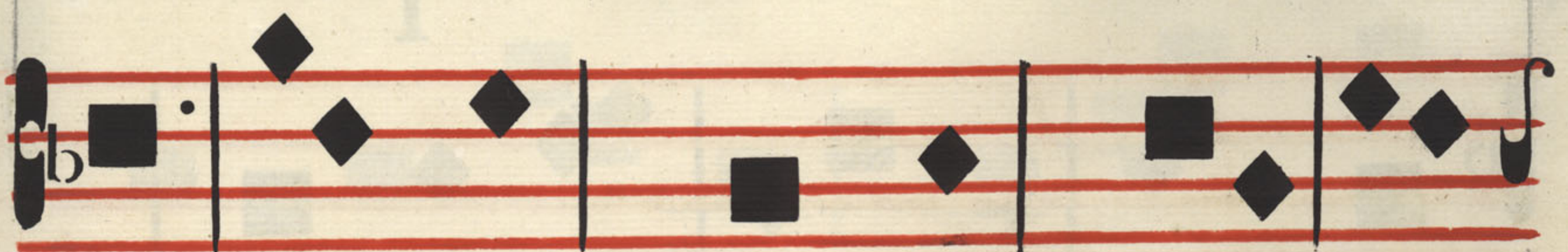
cón cides. **O** chari tá=



tis vi cti ma Tu cor



da nostra cón cre ma,



Ti bique gentes cre =



di tas A véni ab igne





Ps Proba me Dómine, & tenta me.

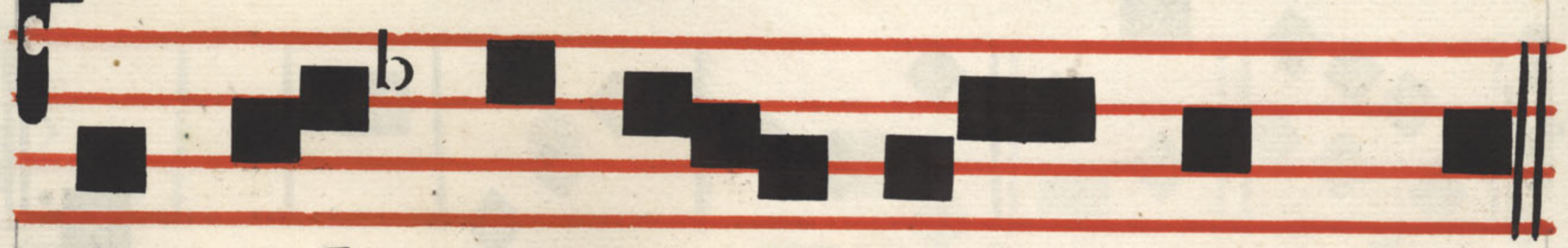
R Ure renes meos, & cor meum.

AD MAGNIFICAT ANTIPHONA





per cussé runt me,



& vul nera ve runt me



e. u. o. u. a. e.

ADMATUTINUM

Invitatorium



Hrif tum



vul nerán tem Te=



refi am a móre lan =



guéntem: Ve ni =



te a do re mus. Pf.

IN LAUD. HIMN. UT IN VESPE.

Ps Proba me Dómine, & tenta me.

R Ure renes meos, & cor meum.

AD BENEDICTUS ANTIPHONA



O fu it me



Dó minus qua si infi =



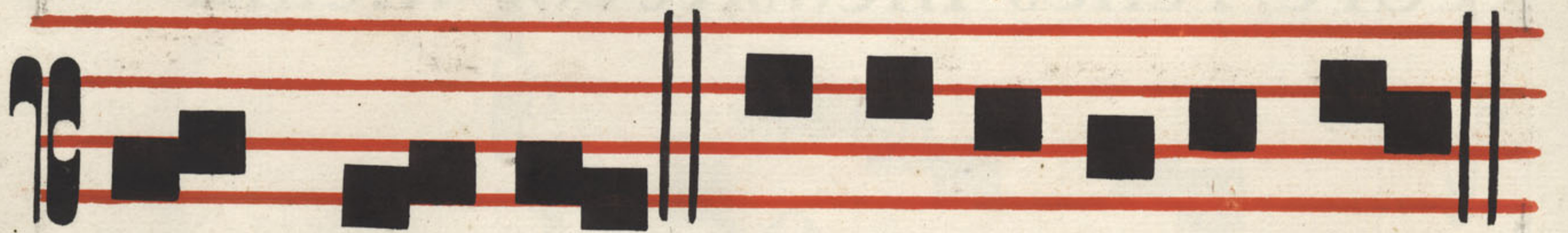
gnum: circúmdedit me



lán ce is fu is, & effú =



dit in ter ra víf ce =



ra me a. e. u. o. u. a. e.

AD MISSA

S  **Uf** **citans**

 **fulci ta** **his Do** **mine**

 **arcum tu** **um in luce**

 **fa** **gita rum tu a** **rum,**

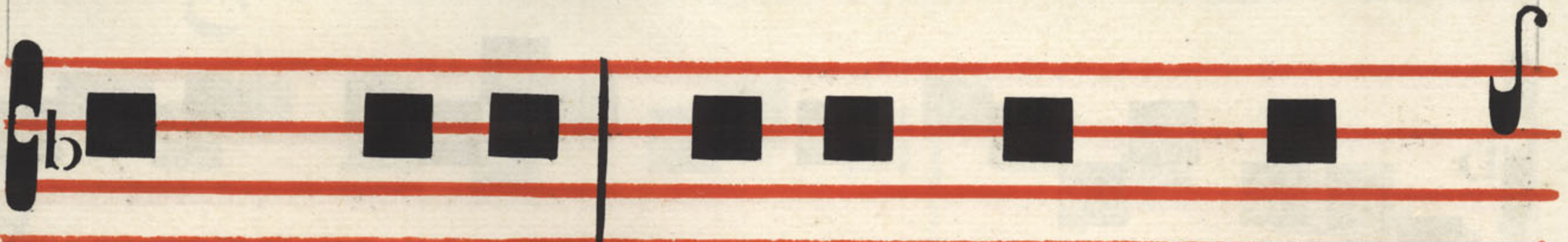
 **&cum splendo** **re ful=**



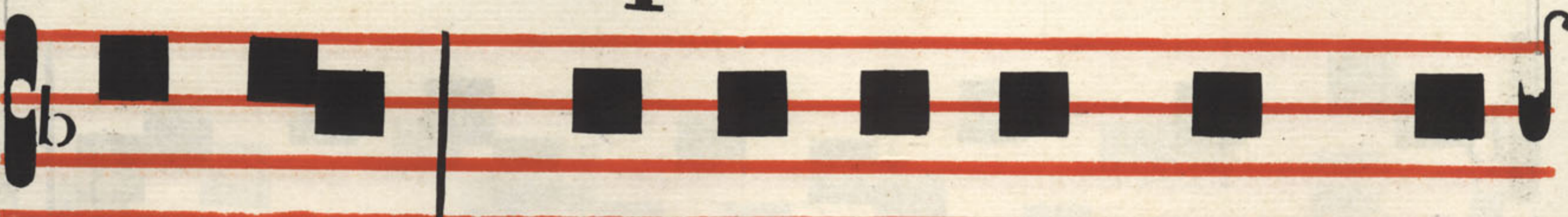
gu ran tis haf tæ tu =



æ. Pf. Para tum cor me =



um Deus, paratum cor



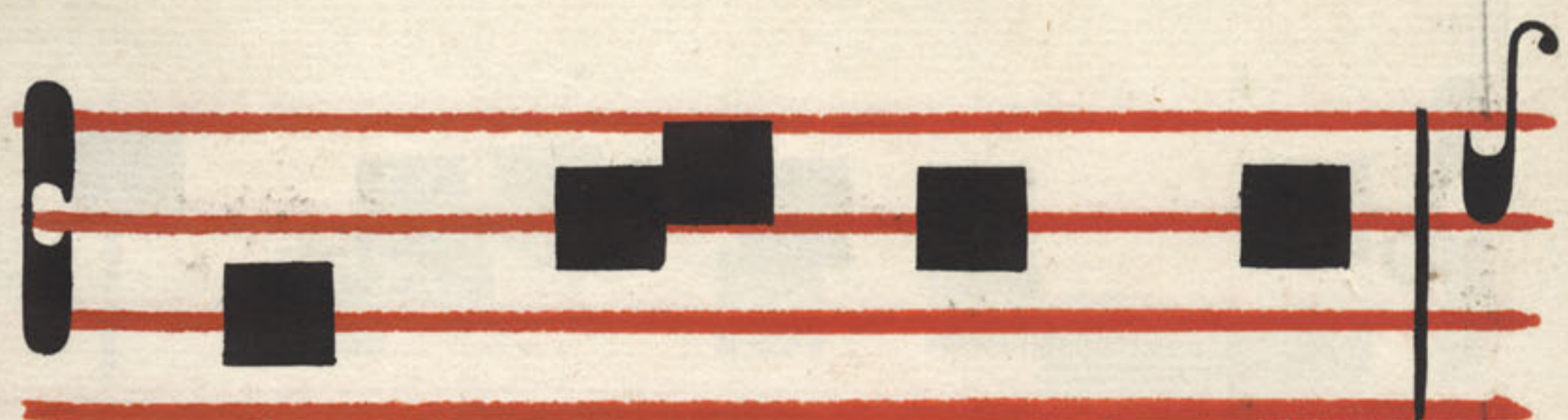
meum: cantabo & psallam



in glori a me a



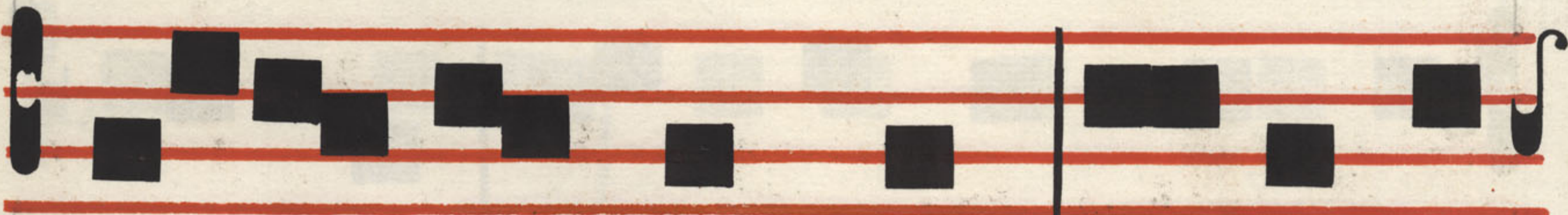
ŷ Glo ri a Patri, & Filio,



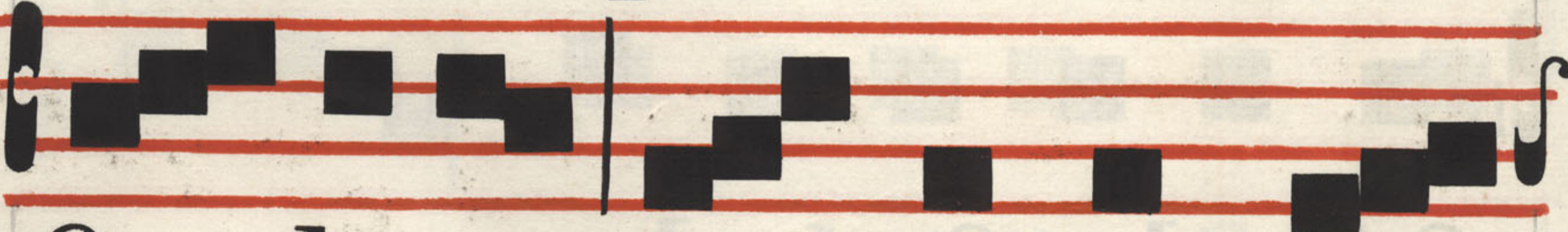
Uem admodum



defi derat cervus ad =



fontes a quarum, i tade =



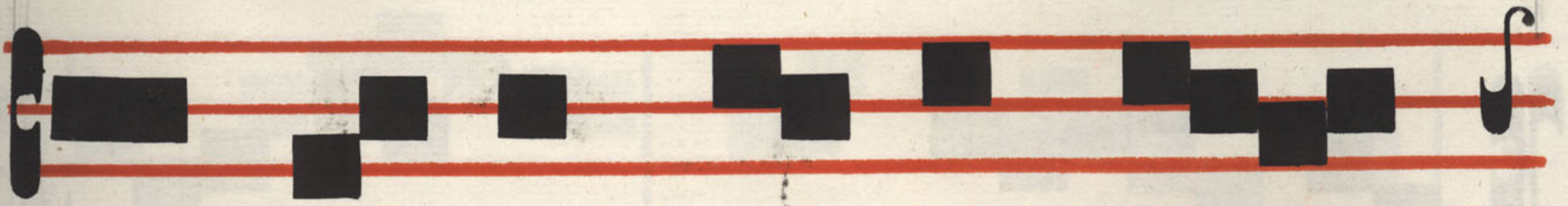
fi derat a nimame =



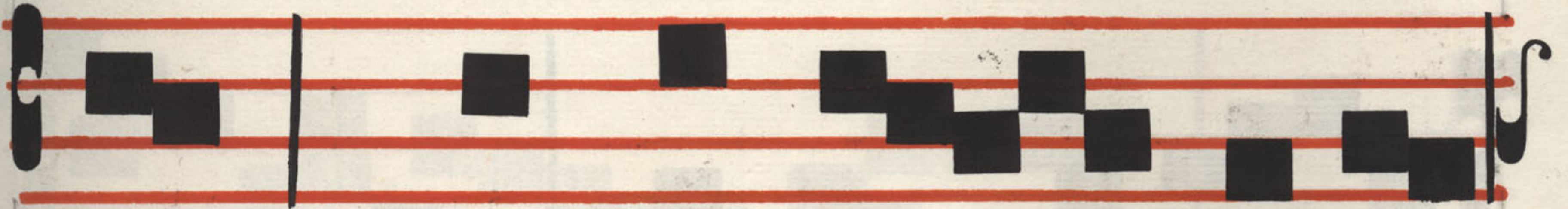
a adte De us.



ŷ Siti vit animame a



ad De um fortem vi



vum, quando ve. ni am,



& cappa re bo antefaci =



em Do mini. Al le =



lu ia Al le



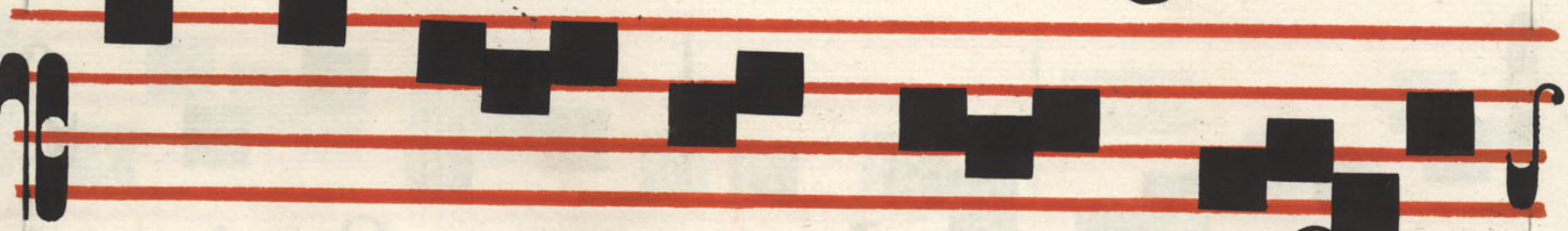
lu ia *ŷ* Pro bas ti



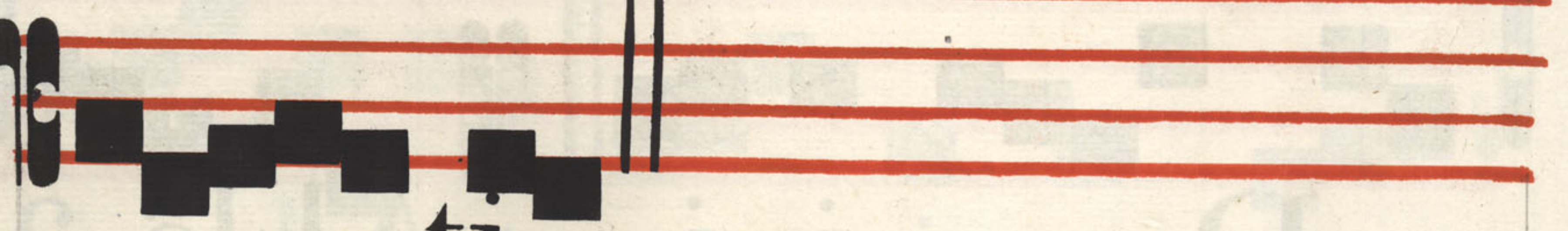
cor me um, & vi fi =



tas ti no cte, ig ne =



me ex a mi nas



ti.

Offerto
rium



Ni ver sa vi =



ta li a ad o le bit



inpa bulum ignis,



& obla ti o nis



Do. mi ni.



Q Uo ni am



Do minus ipse est



De us , de cœ lo te



fe. cit audi re. vo. =



cem fu am, ut do =



ce. ret te, & in ter ra



ostendit ti bi ignem



fu um ma xim um.

OFFICIUM

S TERESIAE

VIRGINIS & MATRIS NOSTRAE

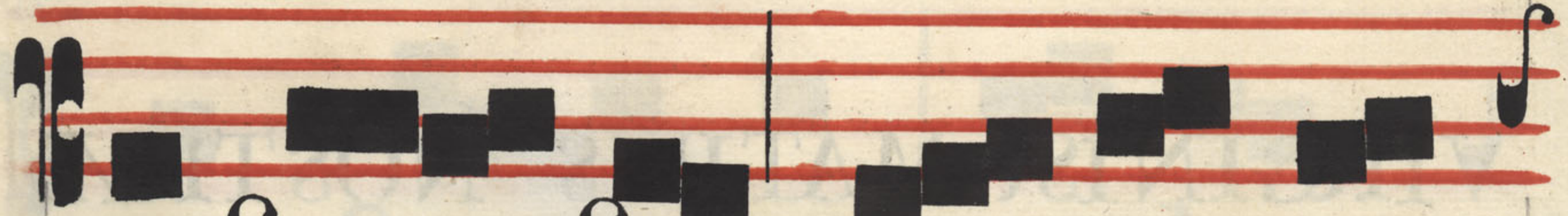
ADVESPTRAS

Antiphona

Z E loze la ta =
 fum pro hono re spon =
 si me i Je su Christi qui =



di xit mi hi: ut ve =



ra spon sa me um ze =



la bis ho nôrem



e. u. o. u. a. e.

Anã



Ulné rál ti cor =



me um Do mi ne, ar =



dénti cuf pi de cha ri-



ta tis tu æ euou ae.

Anña



La vo déx teræ=



tu æ fuba rrhaf time Dó-



mine, & tamquam spon=



sam deco râsti me co =



ro na e.u.o. u a e.

Aña



Ul ci teme fló:



ri bus, sti pa te



me ma lis, qui a a =



mó re lán gue o.



e.u.o.u a e.

Añã

M I hi ab fit glo=

ri â ri ni fi in Cru ce

Dómini nostri Je fu Chrf=

ti, per quem mihi mun=

dus Cruci fi xus est, & e=

go mun do. eu ou a e.

The image shows a page of a musical manuscript with seven staves of music. Each staff consists of five red lines. The notes are represented by black squares and diamonds, with stems and beams. The text is written in a Gothic script below the staves. The first staff begins with a large red initial 'R'. The text is: 'Regis super nuntiata Domum patris Terres Terrae barbare Christi datura sanguinem. Sed te manet'.

Regis super ni-
 nuntiata Domum patris
 Terres Terrae
 barbare Christi datura
 sanguinem. Sed te manet

fu á vi or Mors pena
 poscit dūl si or: Di vī =
 ni a mōris cus pi =
 de In vulnus ic̄ta cōn ci =
 des. O cha ri tá tis vi =
 ctima! Tu corda nostra

cón crema, Ti bí que

gentes cré di tas

Avér ni ab igne li be=

ra Sit laus pa tri cum Fi-

li o, & Spi ri tu Pa=


rá cli to, Ti bí que



Sancta Trinitas



Nunc & per omne saeculum



Amen

V Obliviscere populū tuū & domū patris tui
R & concupiscet Rex decorem tuum

AD MAGIFICAT ANTIPHONA



Uæ si vi in spon-

cón crema, Ti bi que

gentes cré di tas

Aver ni ab igne li be=

ra Sit laus pa tri cum Fi-

li o, & Spi ri tu Pa=


rá cli to, Ti bi que



Sancta Trinitas



Nunc & per omne saeculum Amen



culum A men

V Obliviscere populū tuū & domū patris tui.
R & concupiscet Rex decorem tuum

AD MAGIFICAT ANTIPHONA



Uæ si vi in spon-



fam mi hi e am



af fu me re Do =



ctrix e. nim est dif =



ci pli nae De



i & e lé ctrix



O perum il =



li us euou ae.

AD MATUTINUM

Invitatorium


R  E gem Vir gi =



num Dó mi num



* Ve ni te



ad do re mus Pf.



Hymnus



HÆc est dies qua



cán didæ, Instar colum =



bæ coeli tum Ad fá cra tem



pla spiri tus Se trán stu lit



Tere si æ. Spon si que



vo ces áu di it: Veni so =

ror de vértice Carmé=

li ad Agni núptias Ve=

ni ad co rônânam glo ri æ.

Te spon se Je su Vir gi=

num Be àti a dô rent or=

di nes & núpti á li can=





tico Laudent per omne



faculum. Amen

Ad laudes Hymnus ut supra in vesperis

V Adjuvabit eam Deus vultu suo

R Deus in medio ejus non commovebitur

AD BENITUS

ANTIPHONA

S



An cta Mater Te =



rè fia rès pi ce



dece lo, & vi =



de, & vi fi ta vi ne-



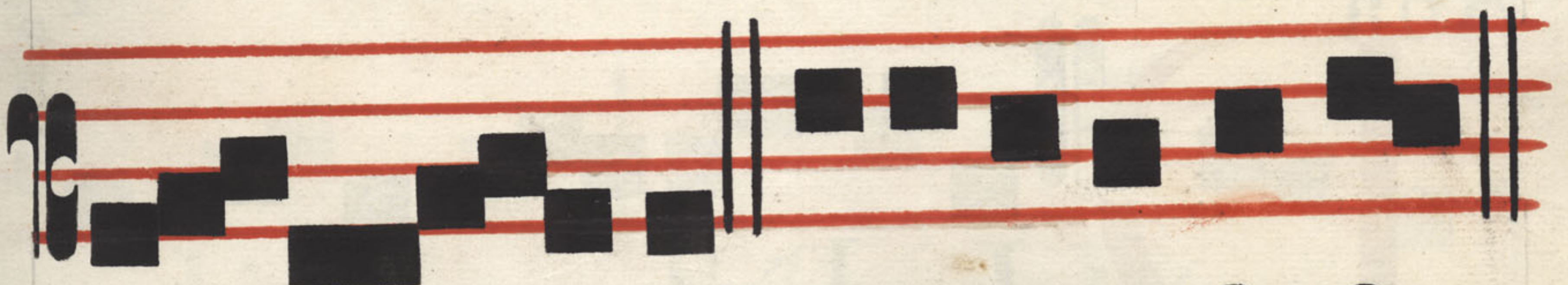
am istam & per fi ce



e am, quam plan ta^=



vit dex te ra



tu a. e. u. o. u. a. e.