



cu pan tur: ex úr gite in



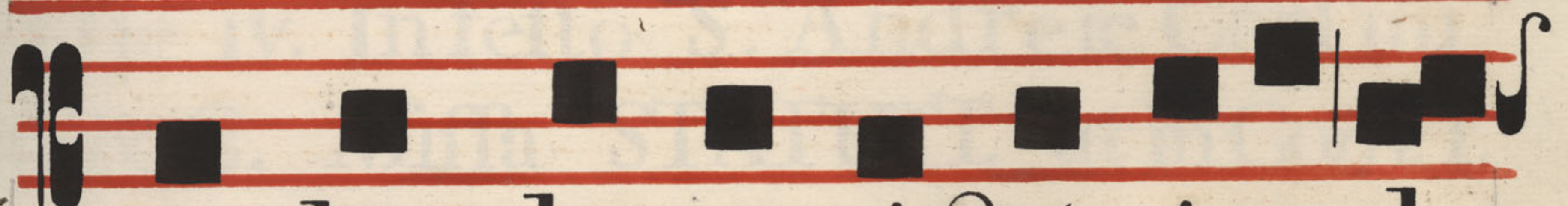
ad ju to rium no bis, ut



& nos de noftra e re pti=



ô ne gau de á mus, &



vos de plena victó ri a glo



ri é mini. e. u. o. u. a. e.

This page contains ten musical staves. Each staff has a five-line structure. The page is filled with faint, illegible text and musical notation, which appears to be bleed-through from the reverse side of the page. The text is mirrored and difficult to decipher, but some words like "Gloria" and "Kyrie" are faintly visible. The musical notation consists of various note heads and stems, though they are too light to be clearly identified.

INDEX

PRO MISSIS SANCTORUM.
Quæ hic non habentur propriæ.

FESTA JANUARIJ.

Die xix. In festo S. Dionysii P. & C.
Missa STATUIT. ut in Comuni. f.

Die xxii. In festo S. Anastasii M.
Missa INVIRTUTE. ut in Com. f.

Die xxviii. In festo S. Cyrilli E. C. &
D. Missa IN MEDIO ECC. ut in =
Comuni fol. Graduale autem
& Tract. ut fol.

FESTA FEBRUARIJ.

Die iv. In festo S. Andreæ Corfini
E. & C. Missa STATUIT. ut in Com. f.

Die xiii. In festo S. Euphrosinæ V.
Missa DILEXISTI. ut in Comm. f.

Die xv. In festo S. Telefphori P. & M.

Missa STATUIT. ut in Comm. fl.

FESTA APRILIS

Die viii In festo S. Alberti E. & C.
Missa STATUIT. ut in Comm. fl.

FESTA MAII.

Die v In festo S. Angeli M. Missa
PROTEXISTI. ut in Comm. fl

Die xvi In festo S. Simonis Stoch.
C. Missa OS JUSTI. ut in Com. fl.

Die xxi In festo Translat. S. P. N.
Joan. a Cruce C. Missa ut in fest. f.

Die xxv In festo S. Mariæ Magd. de
Pazzis V. Missa DILEXISTI. Com. f.

FESTA JULII.

Die xiii In festo Translat. S. M. N. Te
refiæ Missa ut in festo ejusdem fl.

FESTA AUGUSTI

Die vii In festo S. Alberti C. Missa

OS JUSTI. ut in Comm. fl.

FESTA SEPTEMBER

Die ii In festo S. Brocardi C. Missa

OS JUSTI. ut in Comm. fl.

Die xxv In festo S. Gerardi E. & M.

STATUIT. ut in Comm. fl.

FESTA OCTOBR.

Die xxi In festo S. Hilarionis Abb.

C. Missa OS JUSTI. ut in Com. fl.

Die xxvi In festo Trãslat. S. Andræ

Corf. Missa ut in festo ejusdẽ. f.

Die xxx In festo S. Serapionis E. &

C. Missa STATUIT. ut in Com. f.



O S J U S T I U S I N C O M M U N I S

FESTA SEPTEMBER

Die in festo S. Gerardi C. M. M.

O S J U S T I U S I N C O M M U N I S

Die xxv in festo S. Gerardi E. & M.

STATUTUM IN COMMUNI

Die in festo S. Gerardi C. M. M.

FESTA OCTOBER

Die xxi in festo S. Hilarii Abb.

STATUTUM IN COMMUNI

Die xxvi in festo S. Andree

Die in festo S. Gerardi C. M. M.

Die xxx in festo S. Gerardi E. &

STATUTUM IN COMMUNI

FESTA JULII

Die in festo S. M. N. H.

Die in festo S. M. N. H.

FESTA AUGUSTI

Die in festo S. Alberti C. M. M.


F E lix di es, qua
 cañdi dæ, Instar colũbæ,
 cæli tum Ad sacra tem
 pla spí ri tus Se =



tránstu li Te ré fi æ.



Sponsique voces áudi-



it: Ve ni foror devéti-



ce Carméli ad a gni



núpti as: Ve ni ad coró



nam glóri æ.



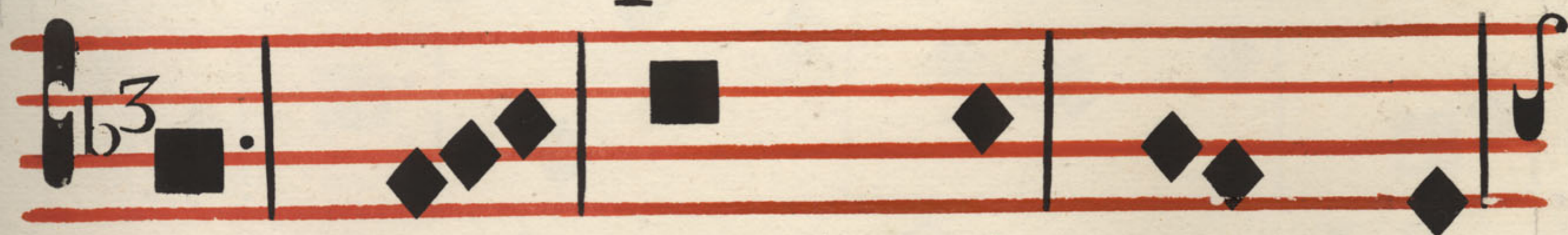
Tesponse Jesu Virgi nũ,



Beá tia dó rent Ordi=



nes, Et nupti á li cán ti=



co, Lau dent per omne



scú lum. **A**



men.

[Faint, illegible text, likely bleed-through from the reverse side of the page. The text is mirrored and difficult to decipher.]

A Vemar is Stel=
 la, Dei Mater al=
 ma, Atque semper Vir=
 go, Felix Cæli por ta.
Sumens il l ut A ve,



Gabrie lis o re,



Funda nos in pa ce,



Mu tans He vae non men,



Solve vincla re is,



Profer lu mencea cis,



Ma la nostra pel le,



Bona cuncta posce.



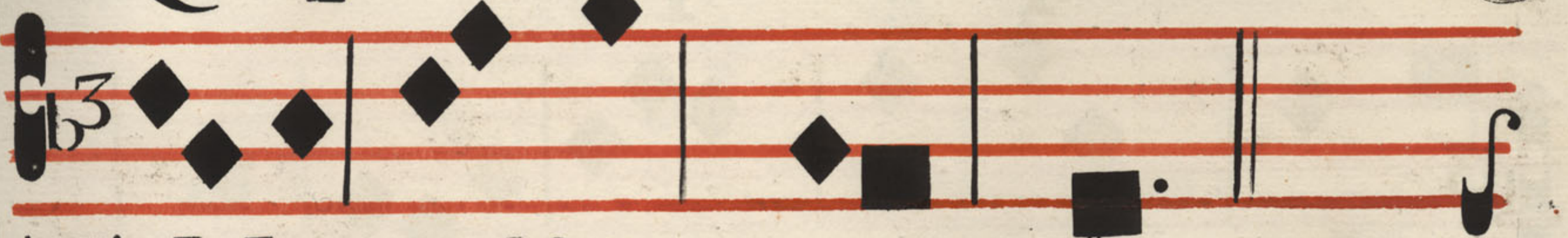
Monstrate esse Matrem,



Sumat per te preces,



Qui pro nobis natus,



Tulit esse tuus.



Virgo singularis,



In ter omnes mi tis,



Nos culpis so lu tos,



Mi tes fac & cas tos,



Vi tam pre sta pu rã,



I ter pa ra tu tum,



Ut viden tes Je sum,



Semper collæ te mur.



Sit laus De o Pa tri,



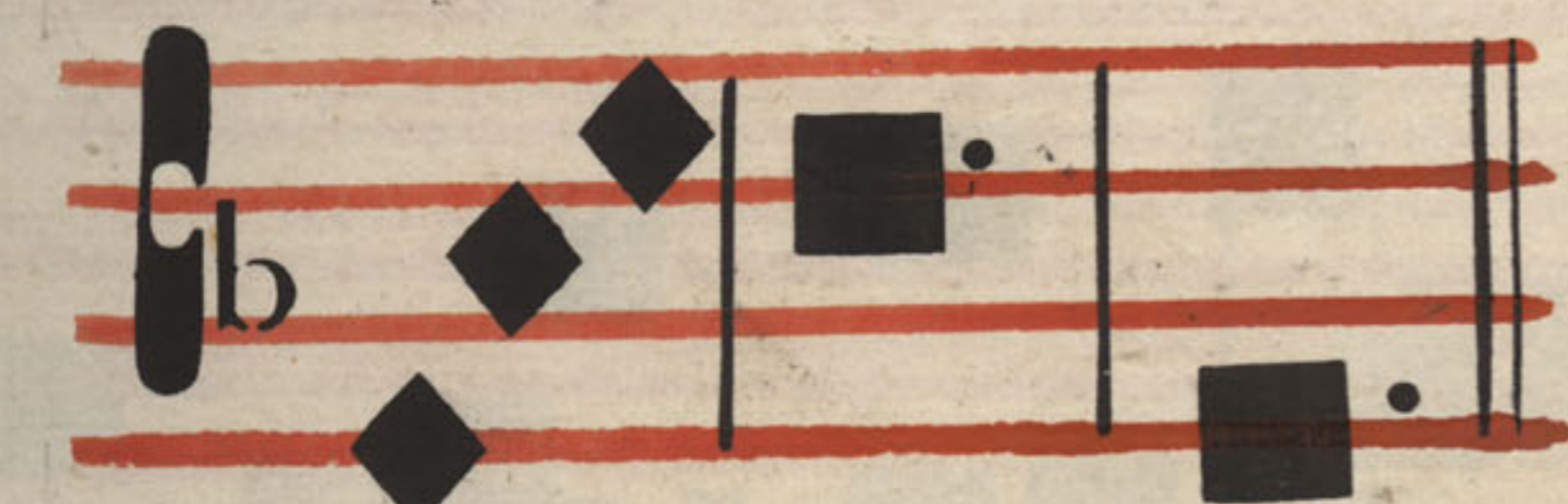
Summo Chri to de cus,



Spi rí tu i Sancto,



Tri busho nor u nus.



A men.

INFESTO.

SANCTISSIMI CORD.

JESUS

ADV ESPERAS ANTIPHONA

D

e torrén te.



in vi a bi bi; propté=



re á exal. tá. vit. caput.



e. u. o u. a. e.



Miserá tor Dó minus



re. dempti o nem.



mi fitp ó pulo suo



e. u. o. u. a. e.

Aña.



Apud Do minum mi se.



ricordi a, & copió sa.



apud. e. um. redempti




O. e. u. o. u. a. e.

Anã.




Su. permifericordiatua



Do mine. confitébor



ti bi in toto cor de



meo e. u. o. u. a. e.



Suavis Dominus u. ni=



verfif, & mifera. tió. =



nes e. jus super óm. =



nia. o. pera. e. jus.



e. u. o. u. a. e.



HYMNUS

Qui cūmque cer =

tumquæri tis Re būs

le vāmen ās peris: seu

culpamordetān xia, Seu.

pena vospre mitcomes

Jesu, qui, ut agnus in

no. cens, fe fe im. =

molándum tráde dit, =

AdCor re clúfum vúl

ne re, ad mite Cor ác =

cedi te. **A**uditis =

utfu a viffi mis in vitet



omnes vó ci bus: ve=



nite quos gra vat la



borpre mit que pon=



dus crimi num .



Quid Corde Jesu mi=



ti us Je sum cru ci =

qui affi xe rant Ex =

cufat, & Pa trem ro =

gat, Ne perdat ul tor =

impi os. **O** Cor, 

vo luptas cœ li tum =

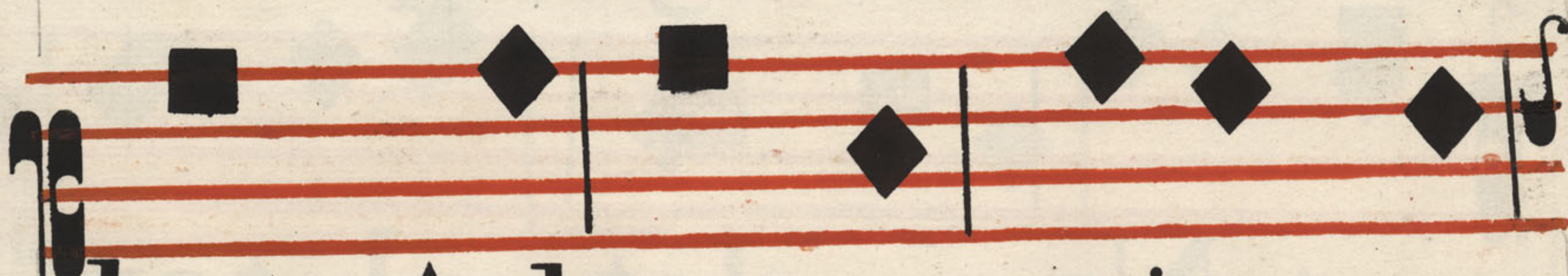
Cor fi da spes mor =



ta li um, En hif



ce tra cti vo ci =



bus Ad te ve ni mus



fú pli ces .



Tu nostra ter ge =



vul ne ra Ex te flu=



en te fán gui ne : Tu =



dano vum cor óm =



ni bus Qui te ge mén =



tes invo cant .



A men.



AD MAG

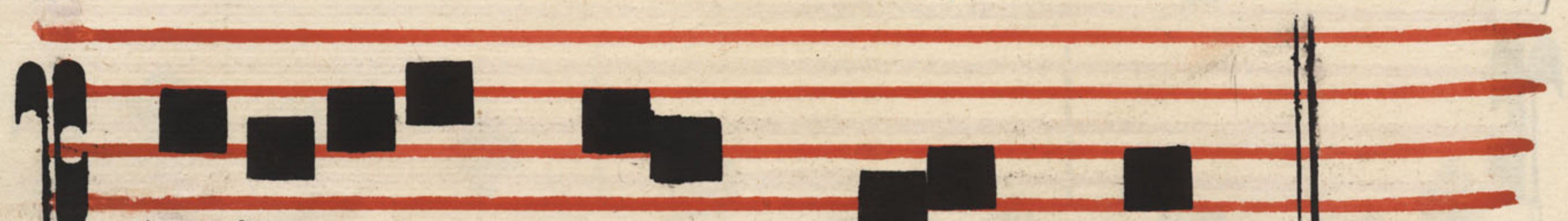
ANTIPHONA 


 Misericordia Dó =


 mini á pro gé ni =


 e in pro gé ni es =


 timén ti bus e um.


 Al le lú i .



Sufcé pit nos Do=



minus in fi num, &=



Cor fu um, re cor =



dá tus mise ri =



cór diae suæ.



Al le lú ia .



S. ANTONIO ADVESP. ANTIPH:

Sa pi én ti am =
 ejus nar rent pó pu =
 li, & laudem e jus =
 nún ti et Ec cle fi =
 a : e u. o u. a. e. :
Si mi lem il lum =



fe cit in gló ri a =



Sanctó rum, & inver =



bis suis monstra plā



cá vit. e. u. o u. a. e



Dedit il li inpre cé =




ptis suis pote stá tem, & =



inle gefu a lucem da=



re I fra el: e u. ou. ae.



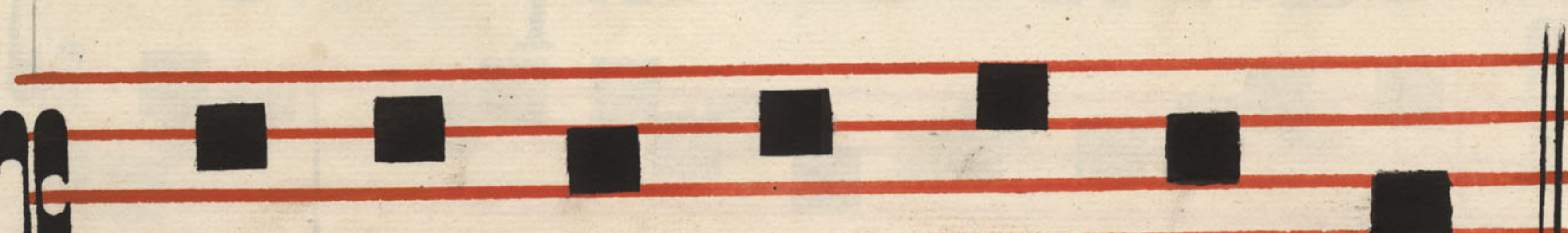
Surré xit qua si i gnis,



& ver bum ipsi us qua=



si facu la ar dé bat:



e. u. o. u. a. e.



Diré et use est di ví ni =



tús in pæni tén ti am =



gen tis & tu lita bo =



mina ti ó nes impi =



e tá tis: eu ou. a. e.



AD MAGNIFICAT ANTIPHONA

O



língua be ne=



dí cta, quæ Domi =



num sem per



be nedixisti, & á li os =



be nedice re docuís =



ti, nunc perspiciu=



cérni tur, quanti méri=



ti fúe ris apud =



Deum: e. u. o. u. a. e

SANCTI ELISEI

IN SEC. VESP. AD MAGNIFICAT ANT.



E li fé us autem ægro=



tába in firmitate, qua =



& mórtu us est: descen =



ditque ad eum joas =



Rex Israel & flebat =



coram eo, dicebat =



que: Pa termi, pa =