

termi, cūrrus Jfrael, =

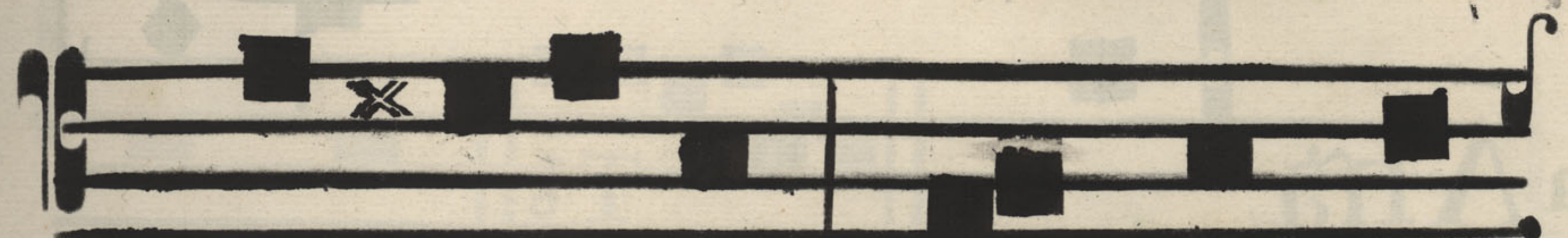
& au rí ga e jus .

e u o u a e :



[Faint, illegible text, likely bleed-through from the reverse side of the page. The text is arranged in approximately 12 horizontal lines across the page.]

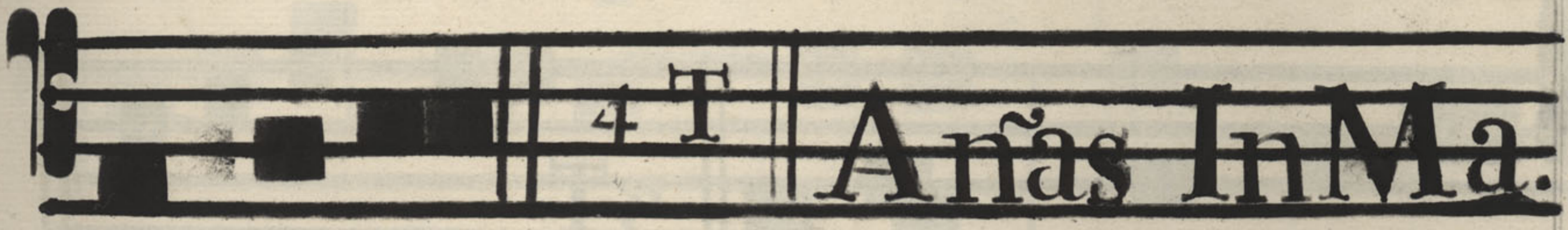
# In Nativitate Domini Invita



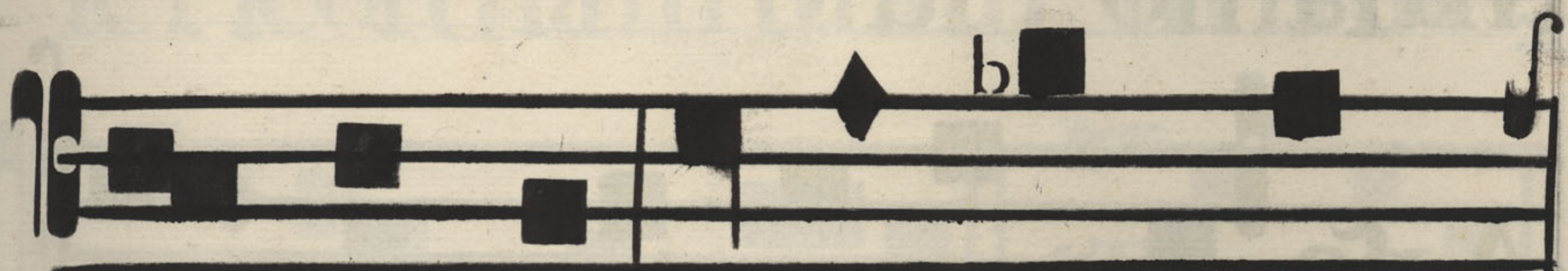
Chri- tus na- tu- se- st.



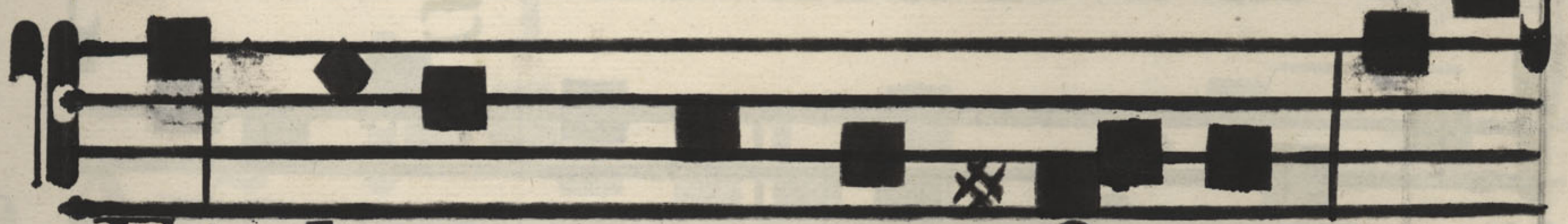
no- bis Ve- ni- te- ad- o-



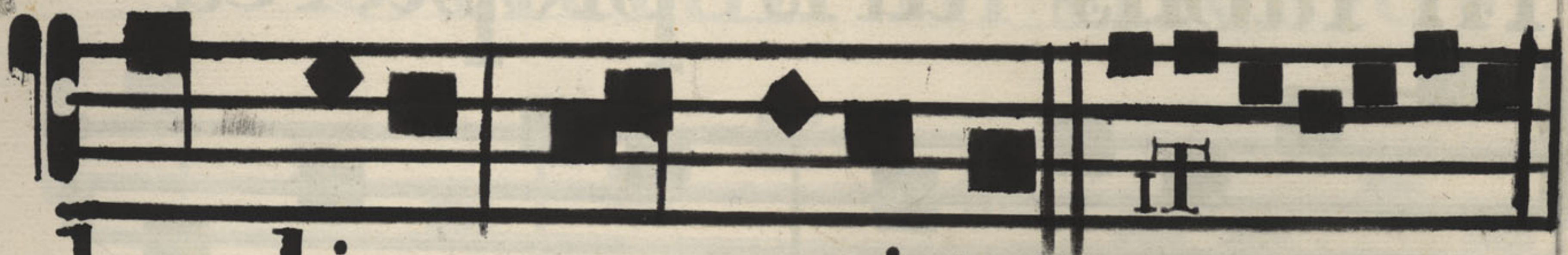
re- mus .



Do- mi- nus di- xit ad- me



Fi- li- us me- us es- tu ego



ho- di- e ge- nu- i- te.

2<sup>a</sup> *Ana.*

Tam quam Sponsus

Dominus proce dens de

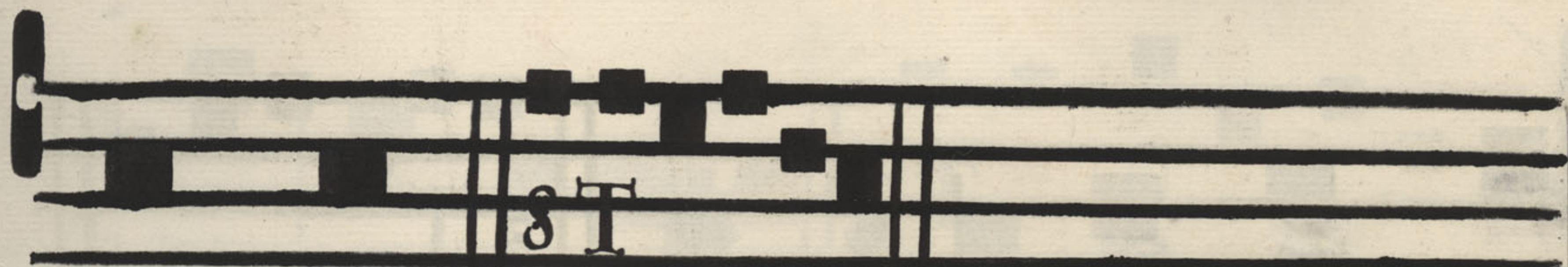
thalamo fu. o

3<sup>a</sup> *Ana.*

Di. ffusa est gratia

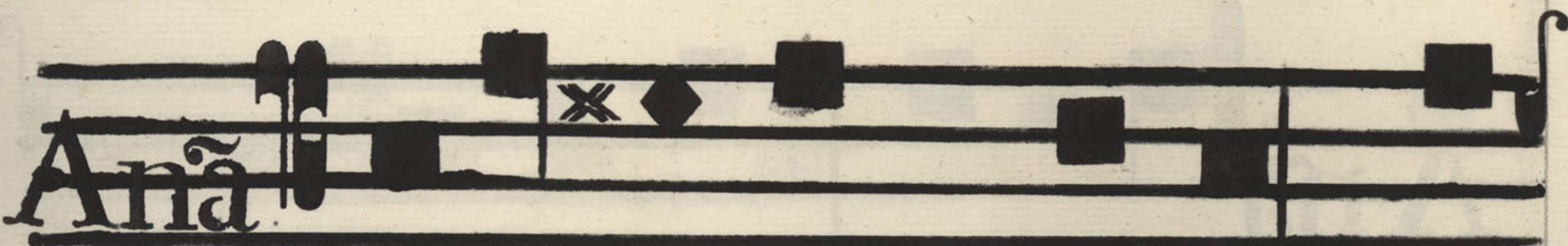
in labiis tuis propterea

benedixit te Deus in æ. =

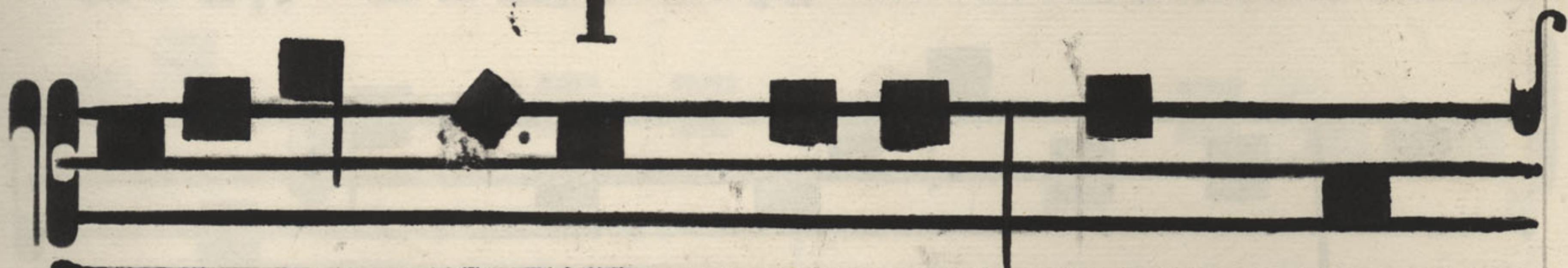


ternum.

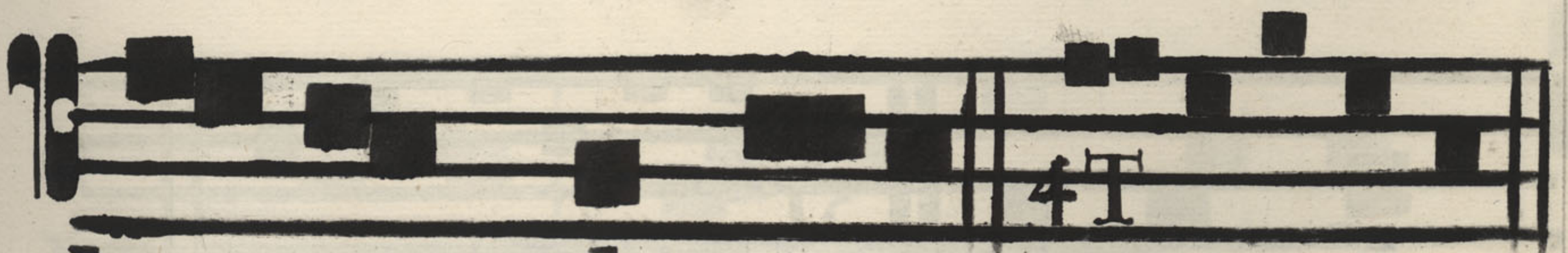
4<sup>a</sup>



Sufcepimus Deus mi-



sericordiam tuam in me-

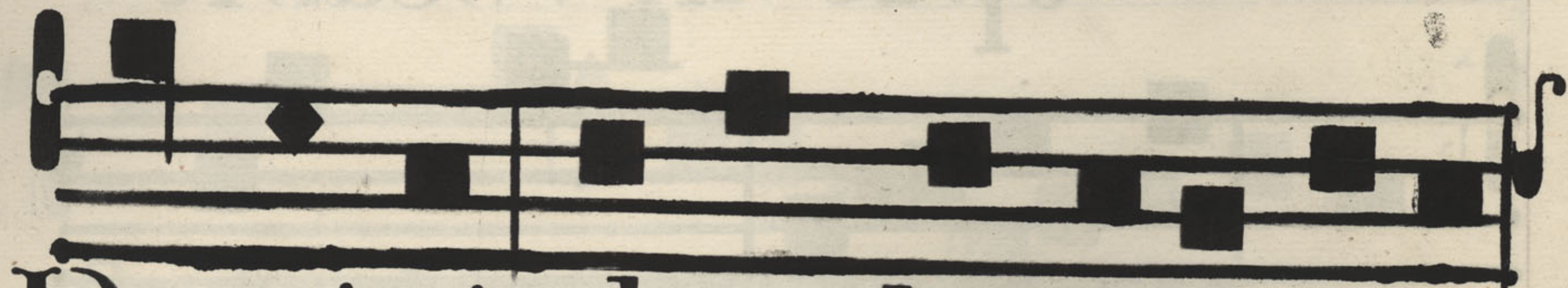


dio templi tui.

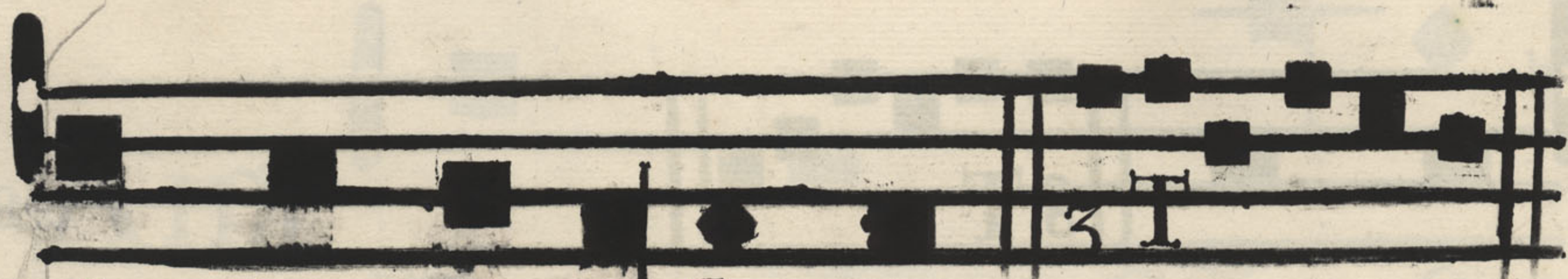
5<sup>a</sup>



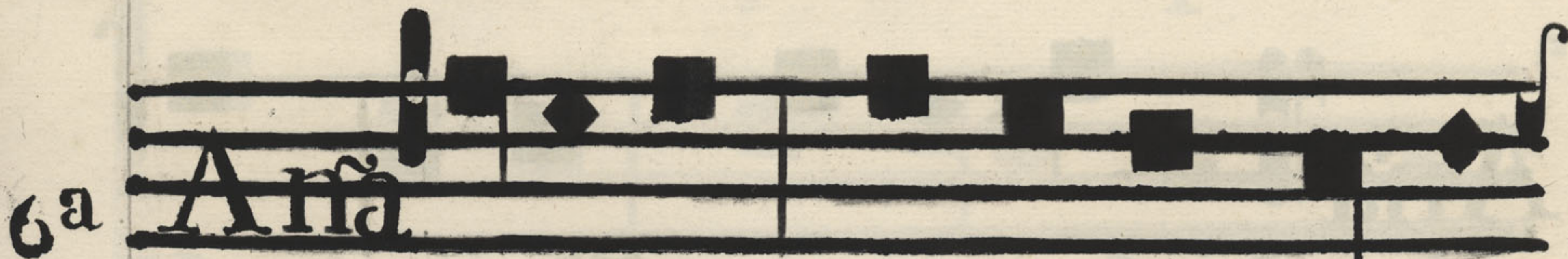
Oriétur in diebus



Domini abundantia pacis

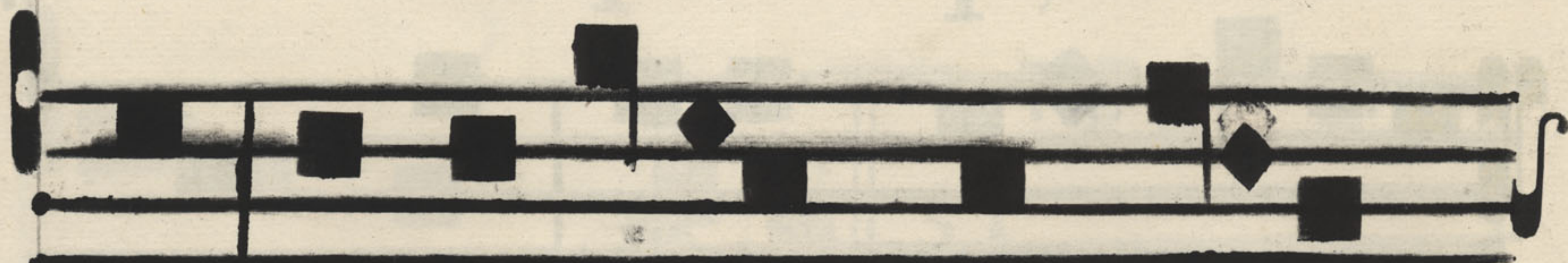


& dominabitur

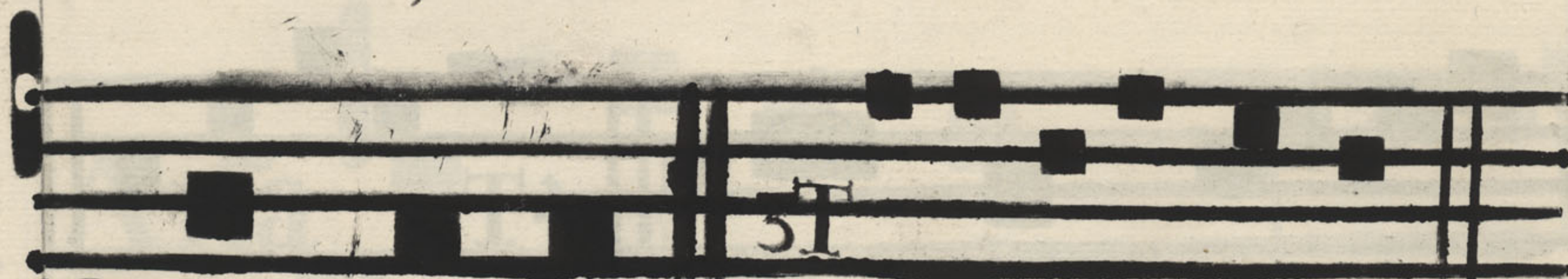


6<sup>a</sup> *Ana*

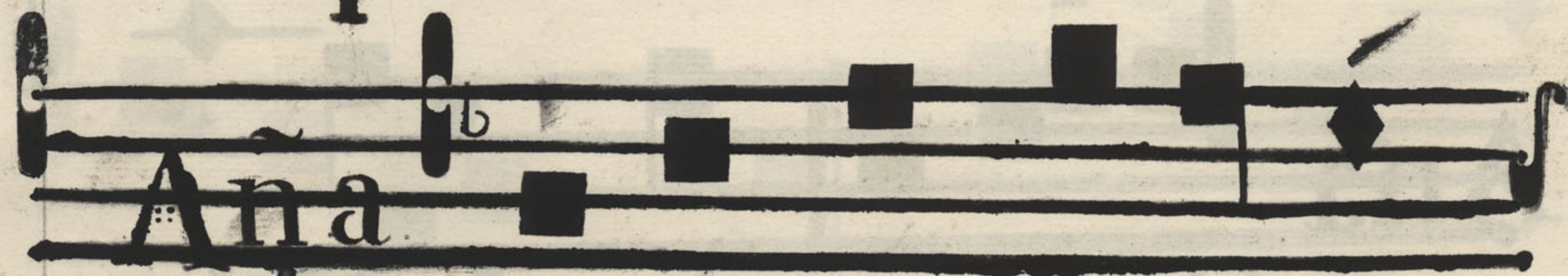
Veritas de terra orta



est & iustitia de Cælo

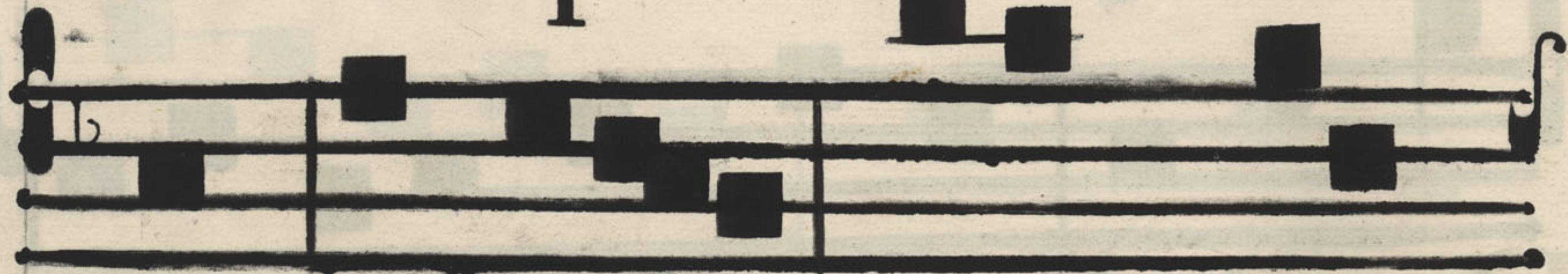


Prof pexit

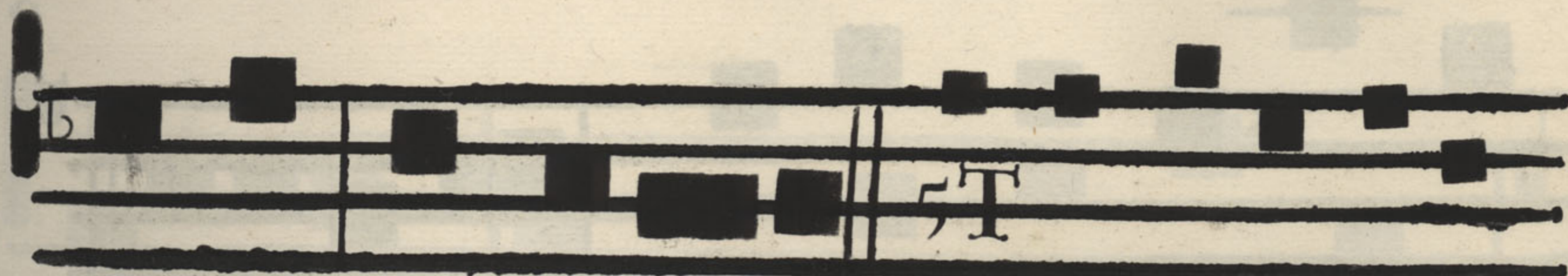


7<sup>a</sup> *Ana*

Ipse in vocabit



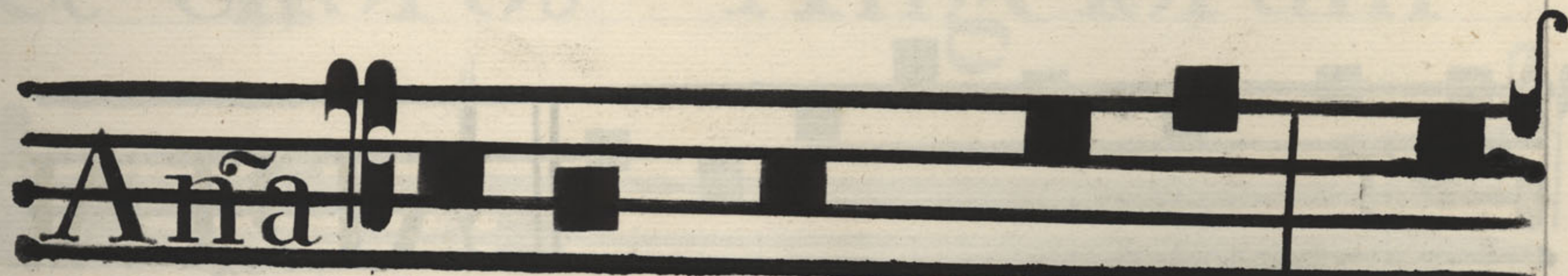
me allelua Paternus



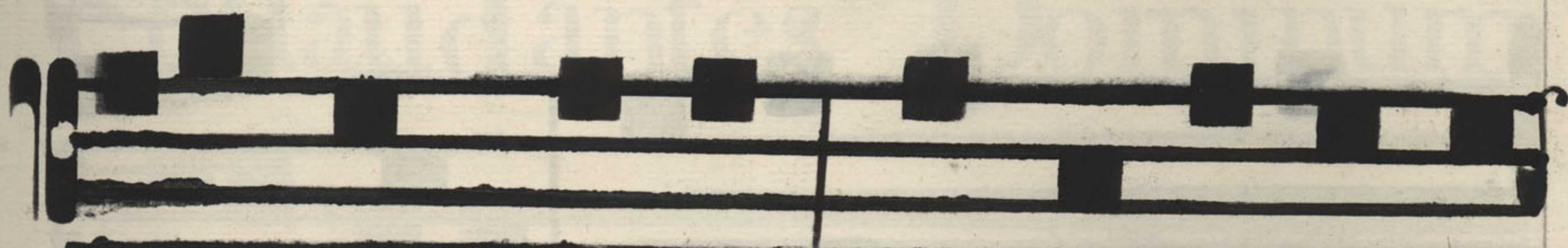
estu alleluia

sa

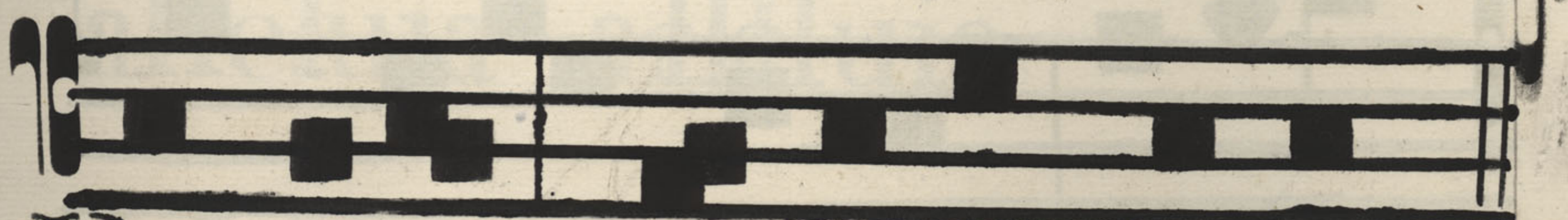
Ana



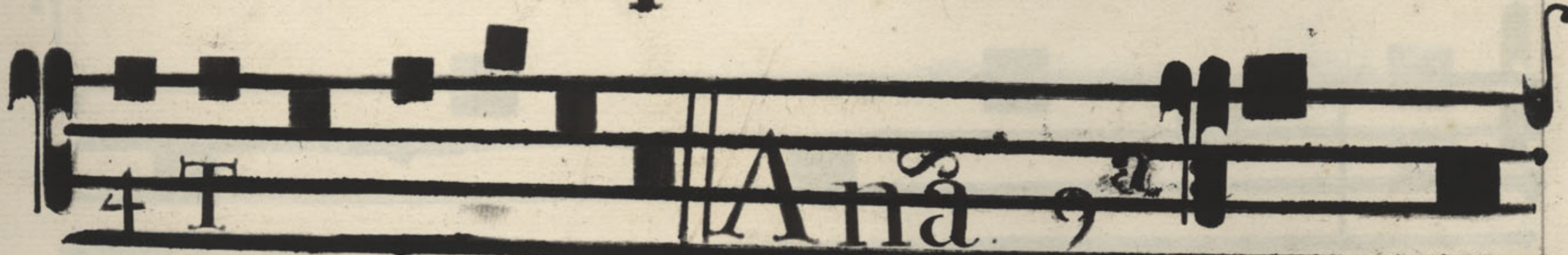
Letentur Cæli &



exultet terra antefaciem

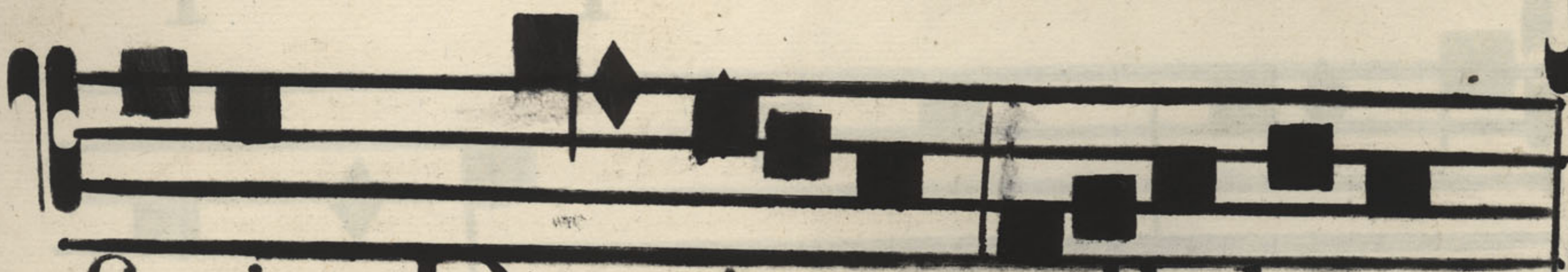


Domini quoniam venit

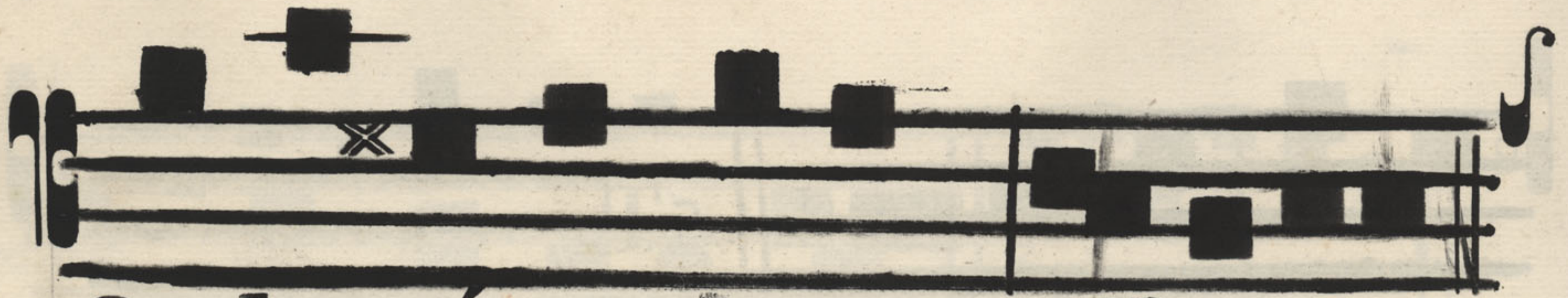


Ana

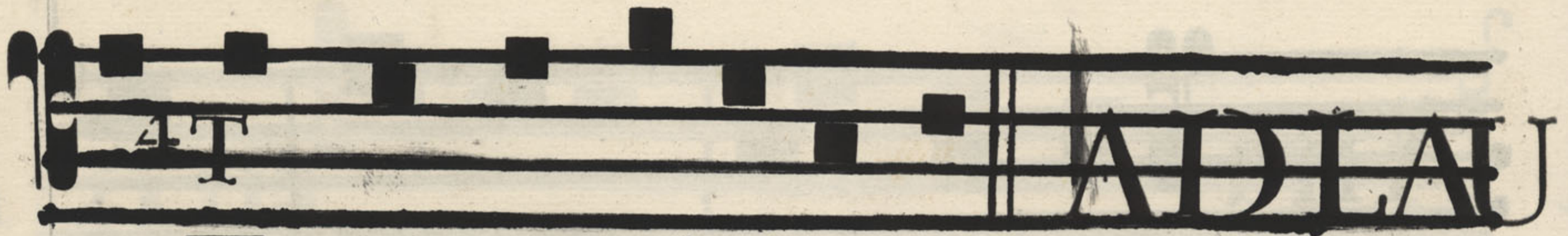
Notum



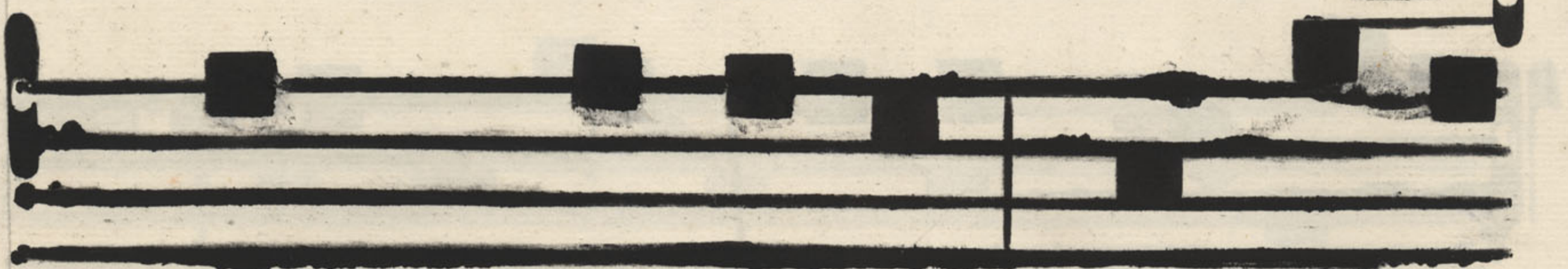
fecit Dominus alleluia



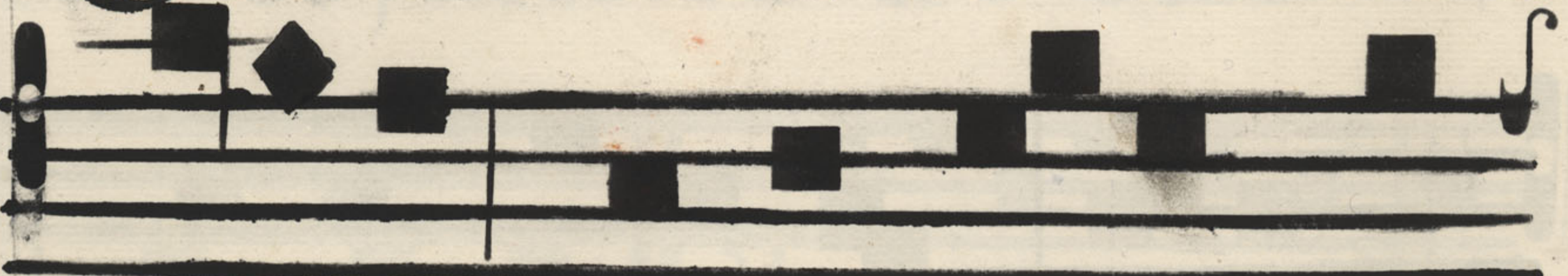
Salutare suum alleluia



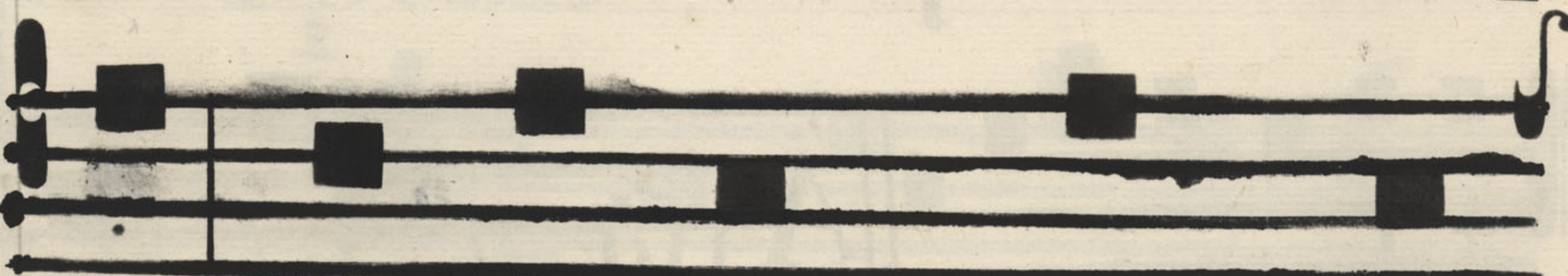
DES ANTIPHONAS



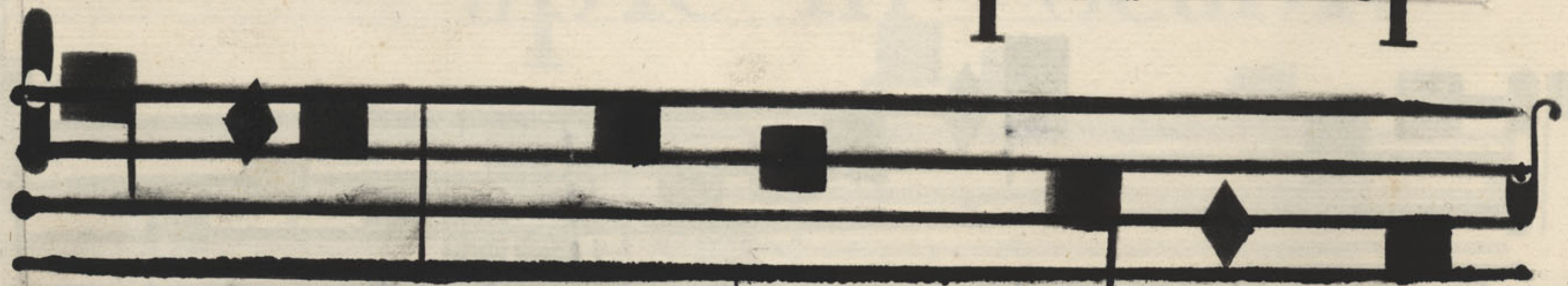
Quem vidistis Pastores?



Dicite annuntiate no

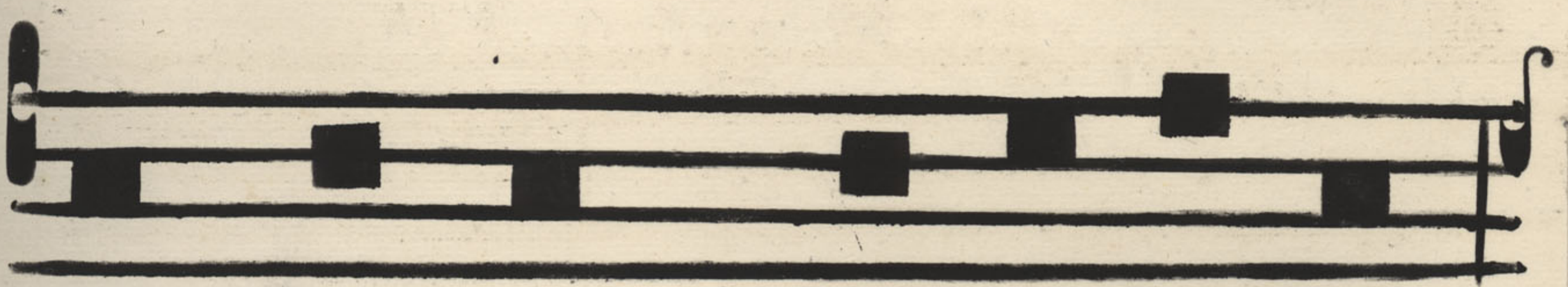


bis in terris quis ap

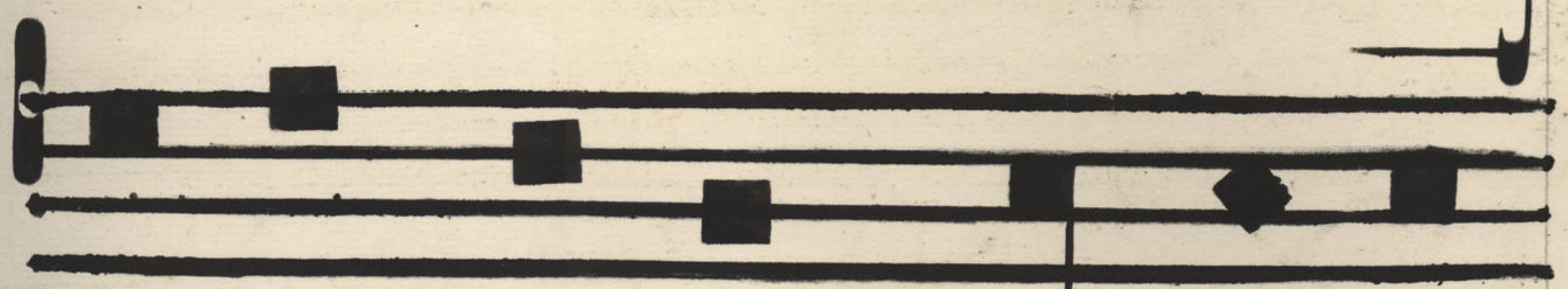


páruit? Natum vidimus

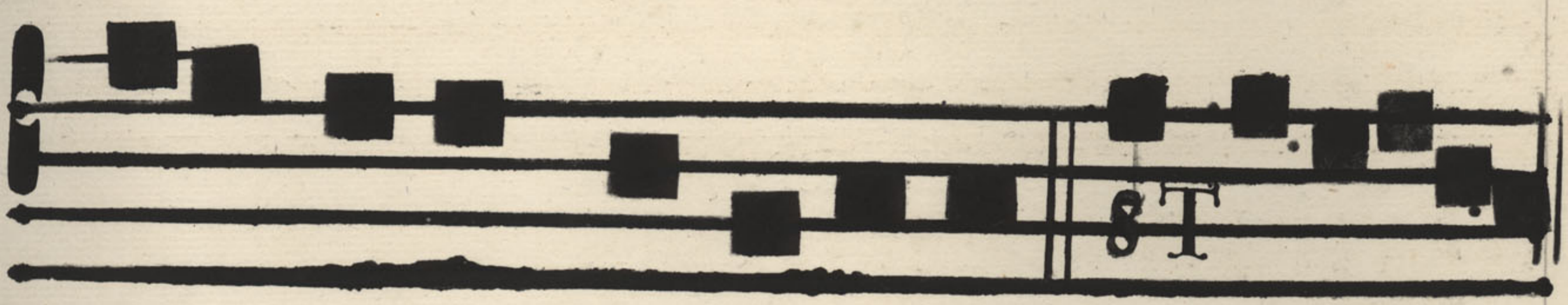




& chōros Angelorum



collaudantes Dominum



alleluia alleluia.



Salmos Anglorum

Collaudantes Dominum

alleluia

Dicite annuntiate no

bis in terris quis ap

preceps Natam vidimus

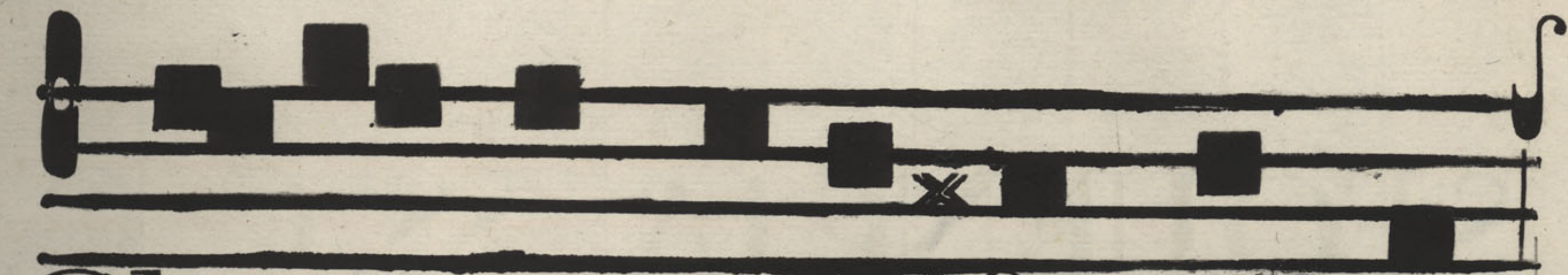




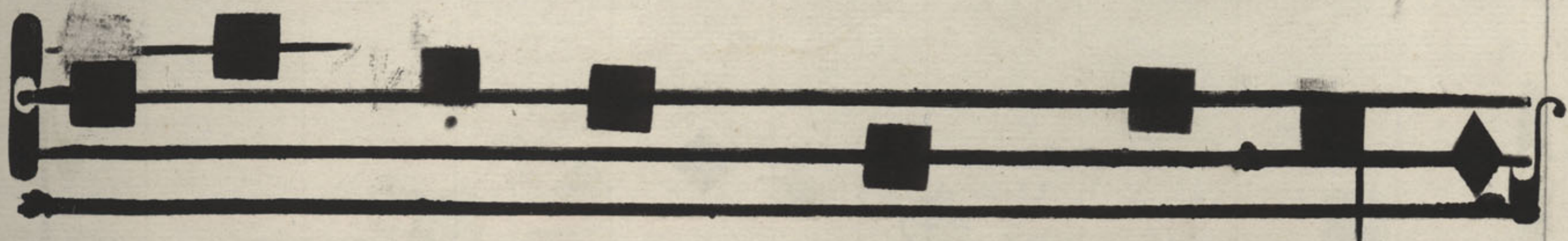
[Faint, illegible text, likely bleed-through from the reverse side of the page. The text is arranged in approximately 15 horizontal lines.]



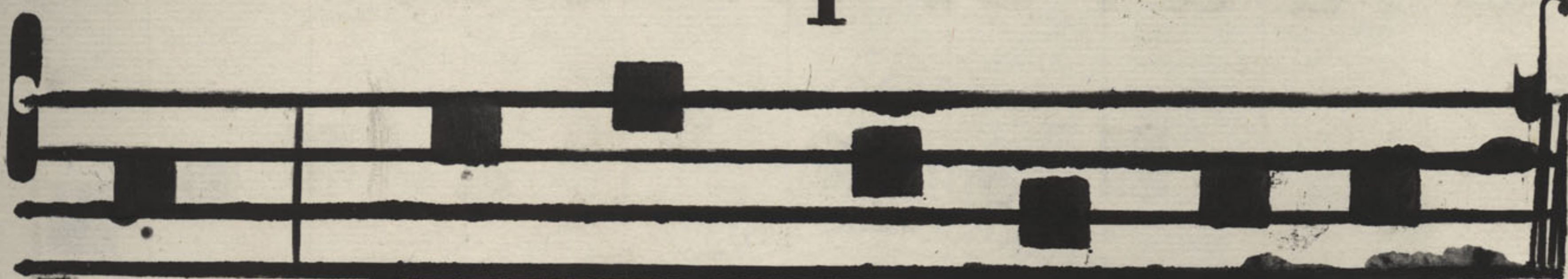




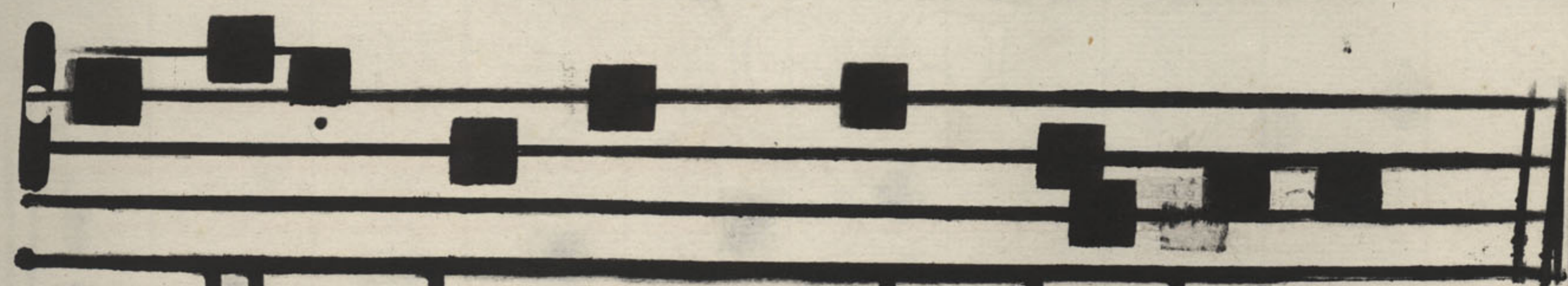
Gloria in excelsis Deo.



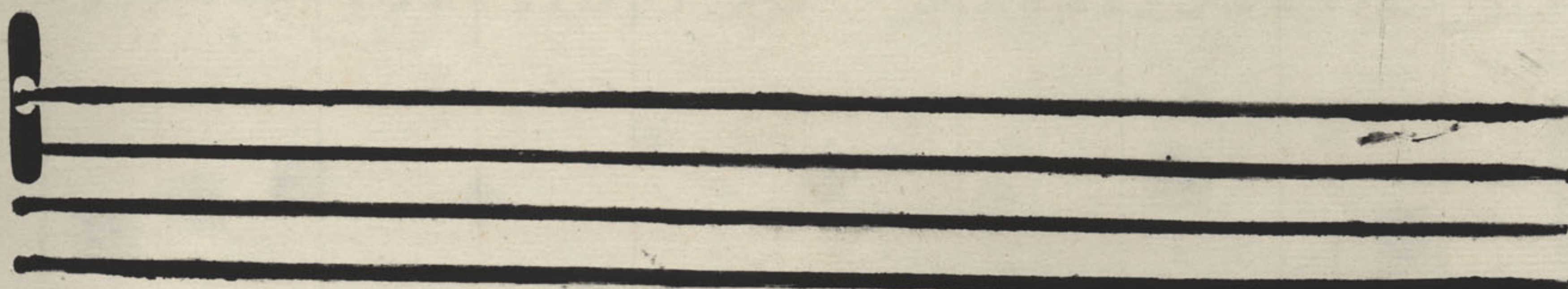
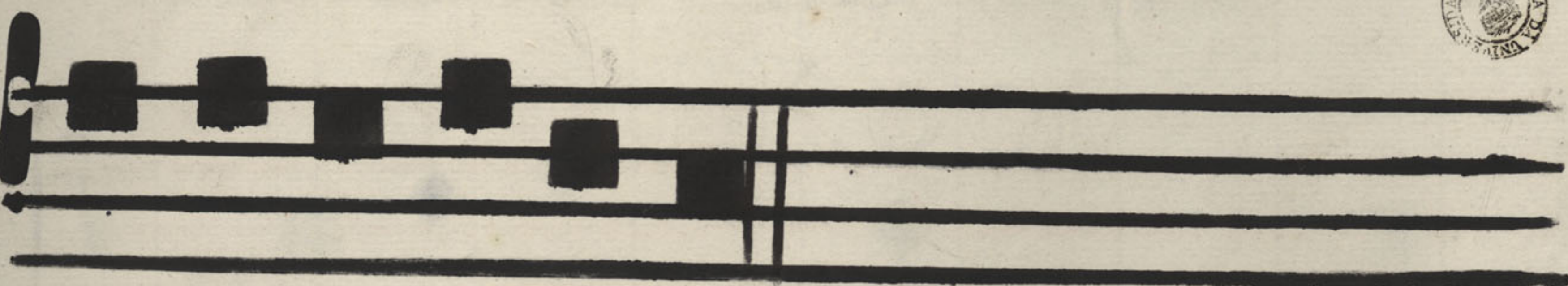
& in terra pax homini-



bus bonæ voluntatis



alleluia alleluia



SEQUENCIA . SS. C. C.

1  
  
 Lau da Sion Salvatô rem,

  
 Lauda ducem, & Pastô rē,

  
 in hym nis & canticis.

2  
  
 Quantúm Potes, tantũ aude:

  
 qui = ama jor omni laude,



nec lau da re. suffi cis.

3

Lau disthema speci â =

lis, panis vivus & vi =

tâ lis hodi é propòni =

tur. **Q**uem in sa cræmêsa


cænæ, tur bæfratrũdu



o. d. è. n. æ.    d. a. t. u. m. n. o. n. ã



b. i. g. i. t. u. r.    .    **S**it.    l. a. u. s.    p. l. e.



n. a. ,    f. i. t.    f. o.    n. ô.    r. a. ,    f. i. t.



j. u.    c. ũ.    d. a. ,    f. i. t.    d. e.    c. ô.    r. a.



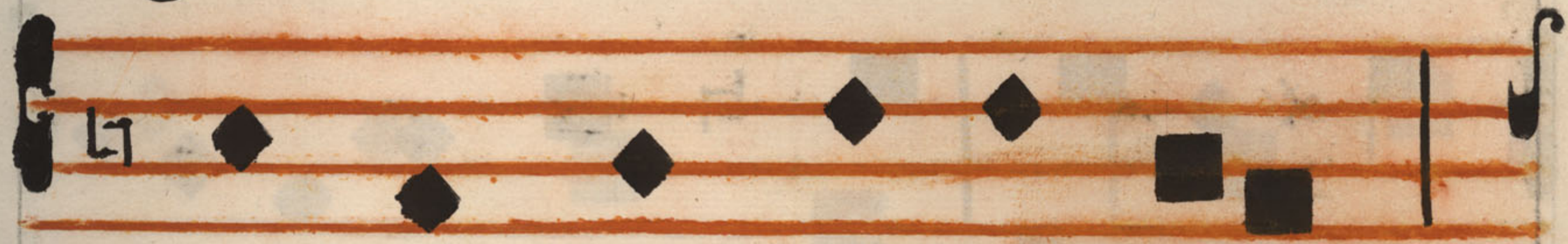
m. e. n. t. i. s.    j. u. b. i. l. â.    t. i. o.    .



**D**ies e. nim. so. l. è. m. n. i. s.    à. =



gi tur, in quamẽ sæ



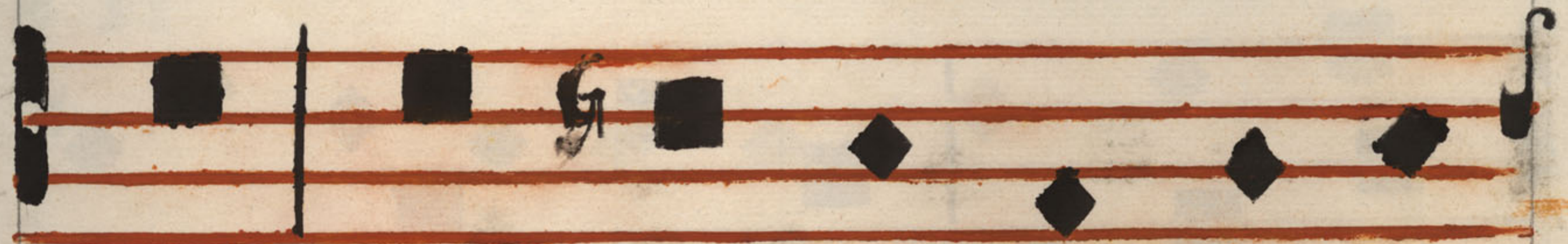
prima re cõ li tur



hu jus ins ti tũ tio.



In hac mẽ fæ novi Re



gis, no vũ pascha novæ



legis, phase ve tus



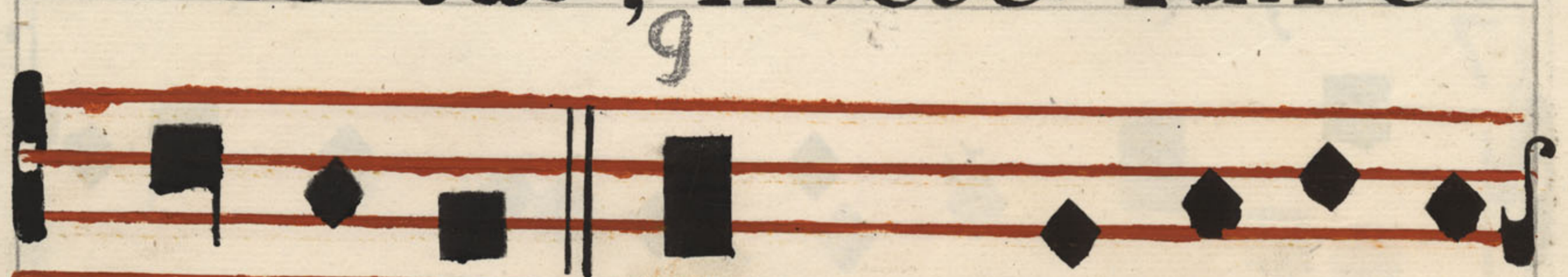
tèrminat. Vetus tâ. tem.



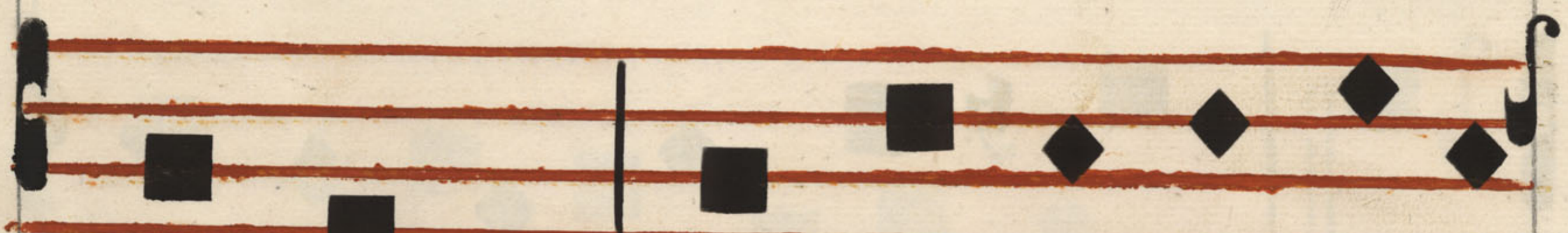
nò. vitas, umbrã fu. gat.



vèri. tas, noctẽ. lux e.



lìminat. **Q**uod incene Ch<sup>ts</sup>



gessit, faci. endũ hoc



expresst in su. ime =

mòriám. **D**octi facris

infti tù tis, panẽ,

vinũ in fa lû tis

con se crâmushòstiam.

11

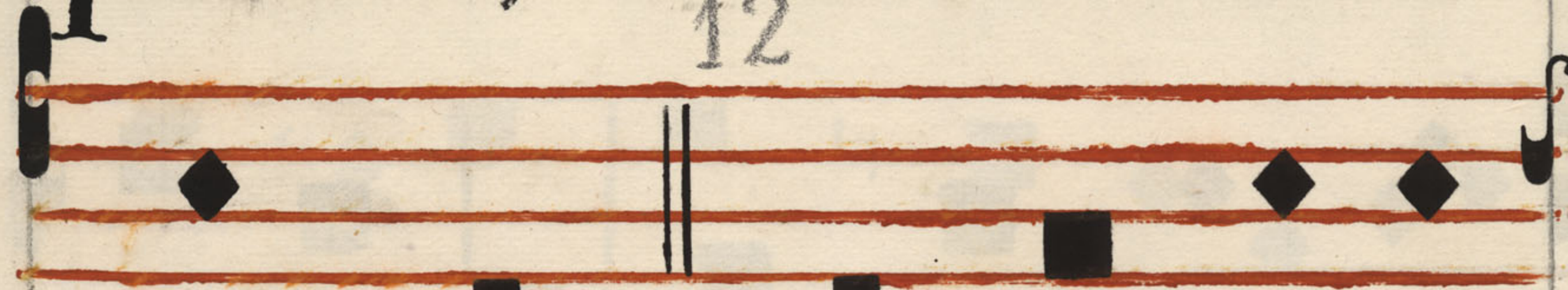
**D**ogma datur Christi à

nis, quódin carnẽtrãsit



panis, & vinũ in san-

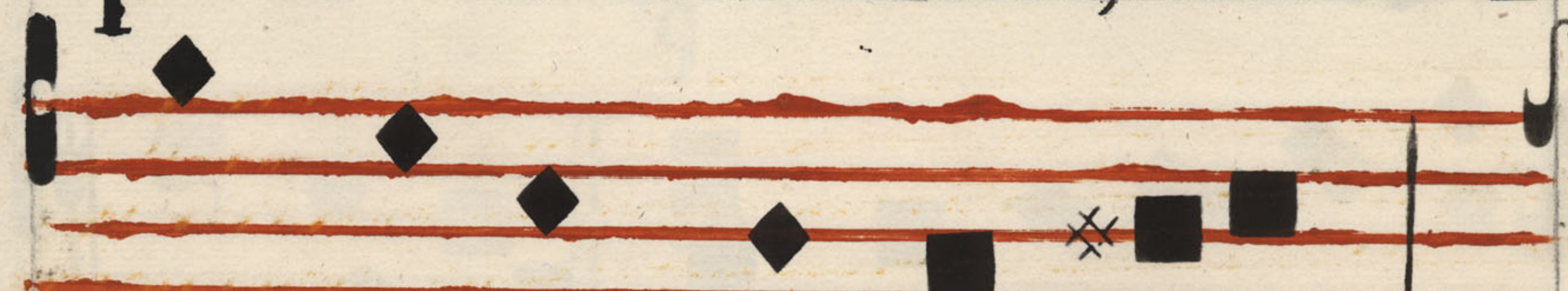
12



gui. nẽ. **Q**uod non capis,



quod non vides, ani =



môsa firãt. fi. des,



præter re. rũ òrdinẽ.

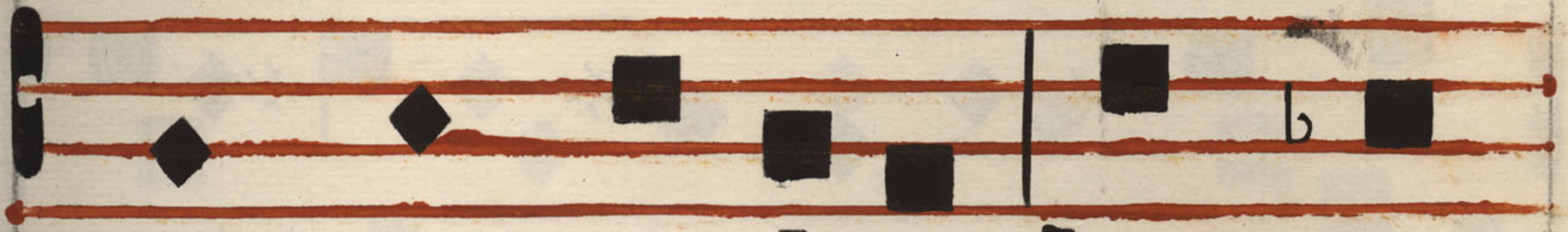
13



**S**ub di. vrẽsis spec i. = ê. =



bus, si gnis tan =



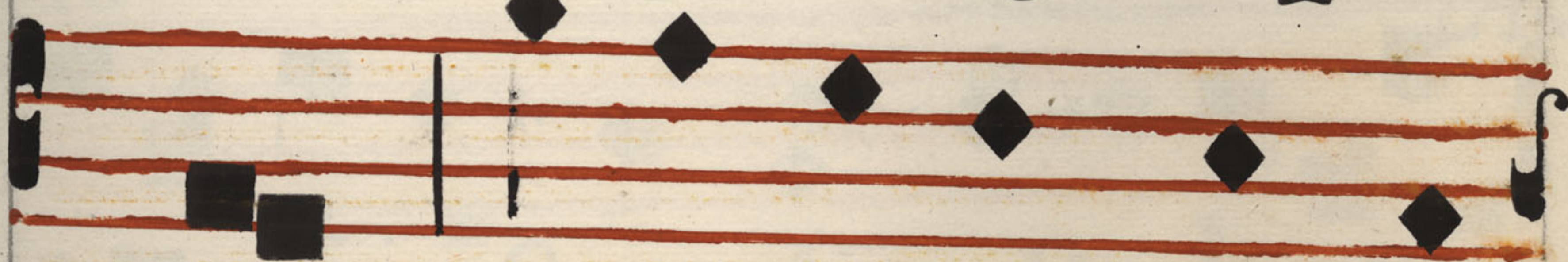
tũ & non rebus, latent.



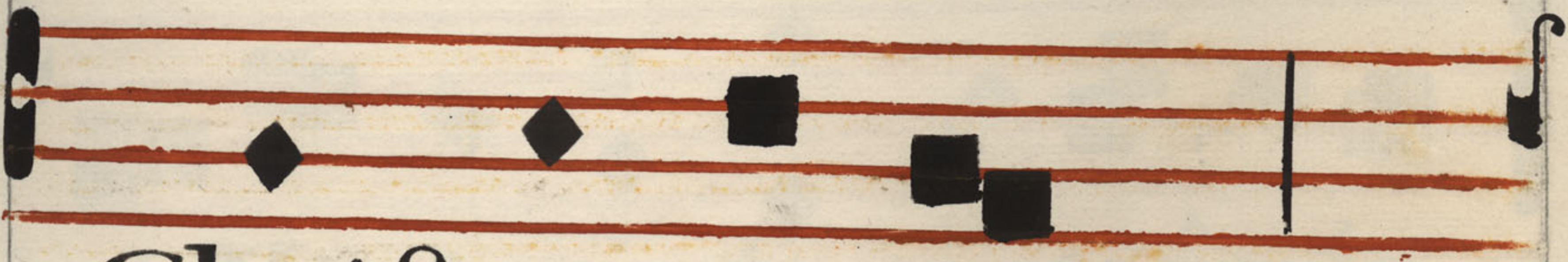
res eximi æ. . **C**a =



ro. ci bus, fanguis po =



tus : ma net. tamen



Christus to. tus




  
 sub utraq̃ue specie .

15
 

**A**ffu mēte non concīsus,



non confractus, non divi-



fūsus in te ger accipitur


16
 

**S**umit unus, sumūt mille:



quantū isti, tantū ille :



17  
  
 nec imputatur consumitur

  
**S**umunt boni, sumunt mali:

  
**S**orte tamen inæquali,

  
 vitæ vel interitus. 

18  
  
**M**ors est malis, vita bonis:

  
 vide paritatem sumptionis,

quám fit. disqar` exitus .

**F**racto. demũ Sacramẽto,

ne. vacilles sed memẽto,

tan tum esse. sub. fragmẽ

to, quã tum. to. to. te=

gitur. **N**ulla rei. fit scif=



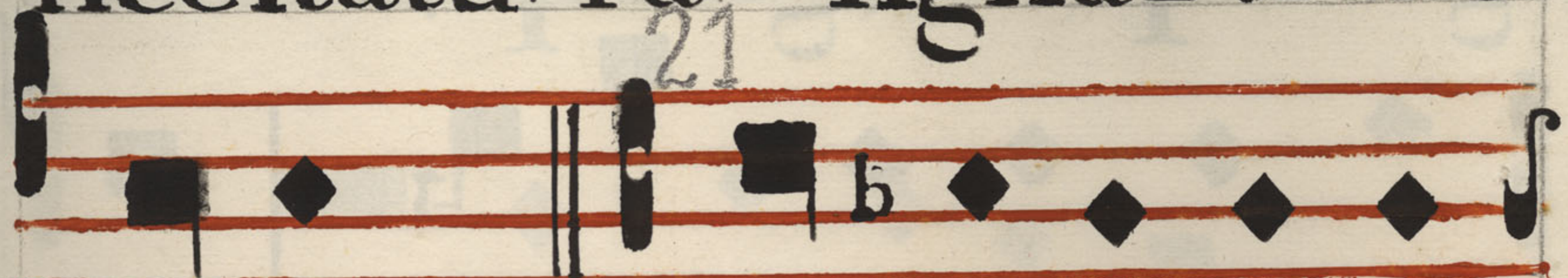
fûra : fi gni tãtúm



fit fractûra : qua ecstatis,



necstatû ra signa=ti mi=



nûi=tur. **E**cce panis an=



ge=lô=rûm, factus ci=



bus viatôrum : veré pa=

nis fili-ô. = rum, non  
 mittēdus canibus. In fi=  
 gūris præsignâtur, cūlfa=  
 ac immo. là tur:  $\Lambda$  g=  
 nus Paschæ deputâ tur:  
 datur manna patri bus.

22



**B**one Pastor, panis vere  
 Iesu nostri miserere:  
 tu nos pascere, nos tue re:  
 tu nos bona fac videre  
 in terra viventium.

**T**u qui cuncta scis & vales,



qui nos pascis hinc mortà =




les : tu os ibi comen =



fà les, cohe rēdes &



fo. dà les, fac sancto =



rũ. civi um. Amen.



Ale lù. i. a.

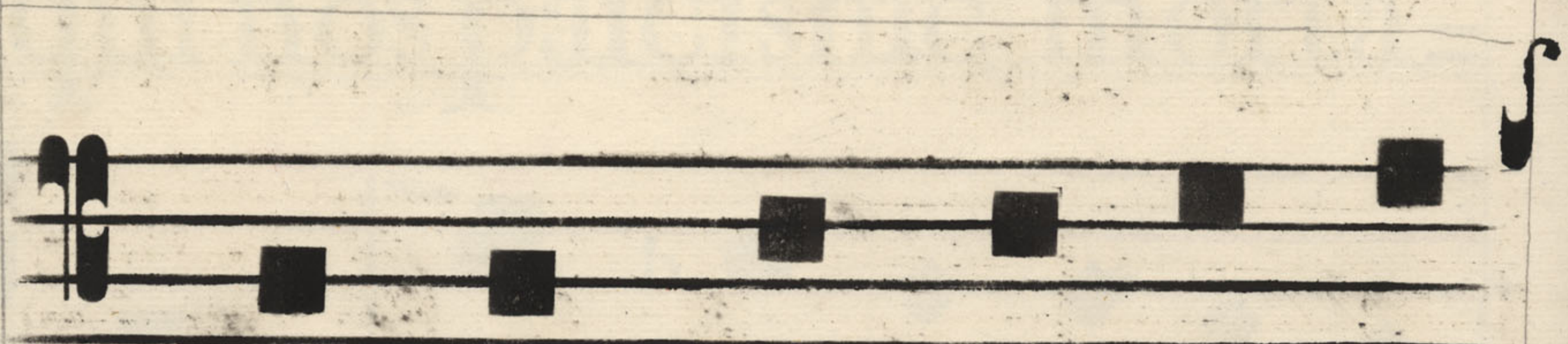
IN FESTO  
IMMACULATÆ  
CONCEPTIONIS



# AD VESPERAS ANÑS

I<sup>a</sup>

Añã



To ta pulchra est Ma-

A musical staff with a C-clef and square notes. The notes correspond to the lyrics 'To ta pulchra est Ma-'. A flat sign (b) is placed below the first note.

ri = a, & ma = cula.

A musical staff with a C-clef and square notes. The notes correspond to the lyrics 'ri = a, & ma = cula.'. A flat sign (b) is placed below the first note.

o. ri gi. na = lis non

A musical staff with a C-clef and square notes. The notes correspond to the lyrics 'o. ri gi. na = lis non'.

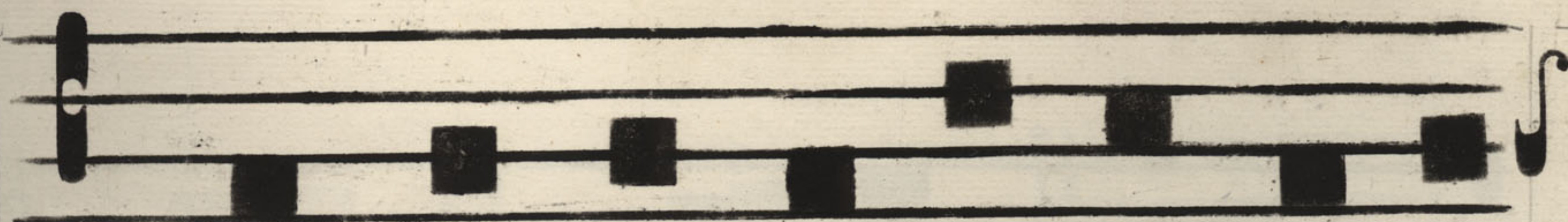
est in te.

A musical staff with a C-clef and square notes. The notes correspond to the lyrics 'est in te.'.

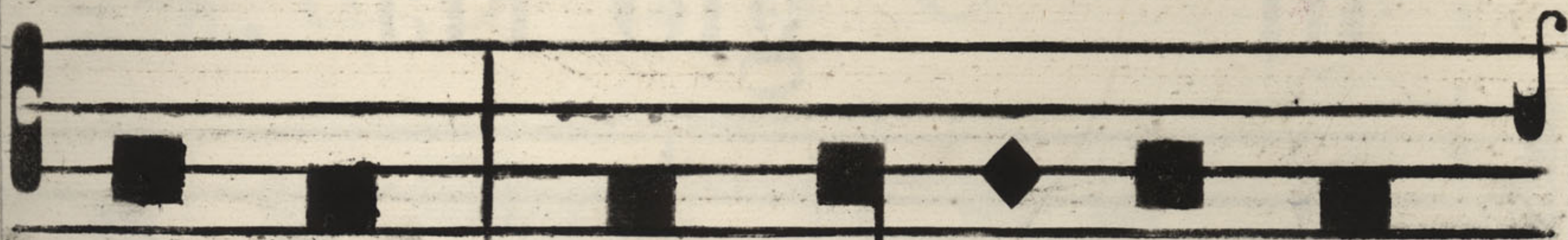
e u o. u a e

A musical staff with a C-clef and square notes. The notes correspond to the lyrics 'e u o. u a e'.

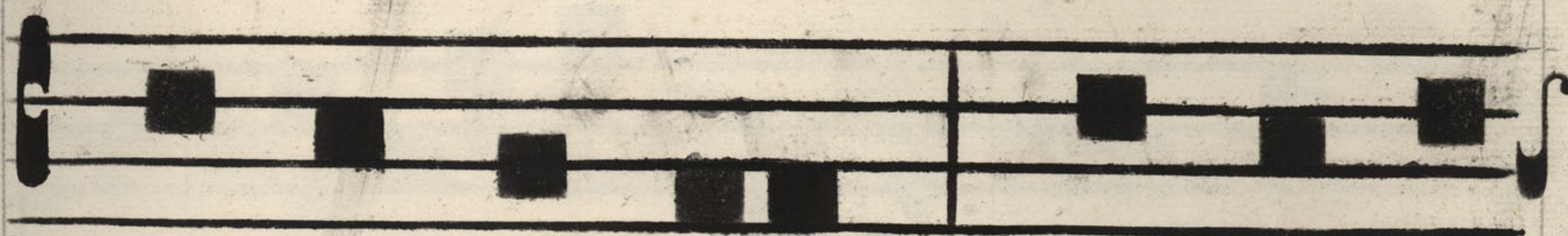


2<sup>a</sup>

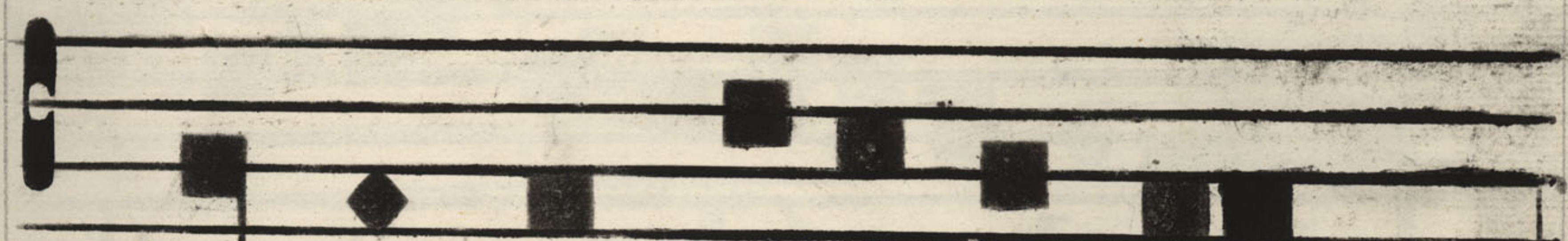
Ves ti men = tum tu =



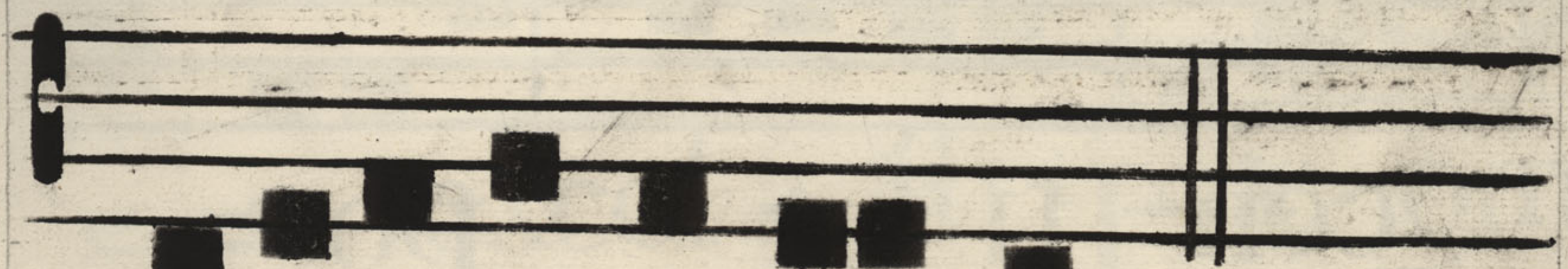
um can = didum



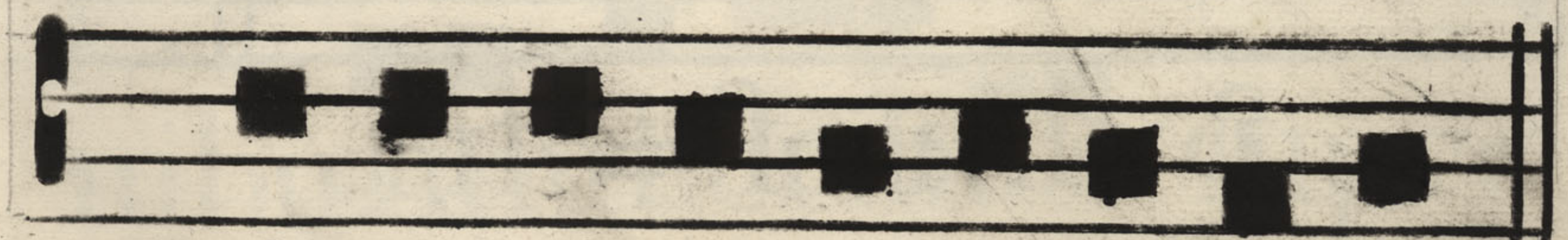
sicut nix, &



faci = ef tu = a



ci = cut sol.



e u o u a e

3<sup>a</sup>.  
Aña

Tu glo. ria Je=  
ru= fa. lem, tu le=  
ti = ti a. Is = rael,  
tu ho=no. = ri = fi.  
cen= ti = a po. =  
puli. nos = tri.