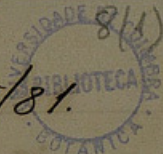


Helmingfors, Dec. 25/81.



Dear Colleague!

A very happy Christmas and a good new year to you!

All my rooms have been under complete reparation all since the beginning of illand, so first in the middle of Oct. I could get them and my collections in order. By this cause I was unable to determine your *Mosses* earlier than now. Amongst them it is a Radula aquilizia, which is rather doubtful, perhaps a new species. By this reason please gather of it the more the better, because Radulae are very difficult, and without masses of them it is impossible to find their area of variation, and send me plenty.

I feel myself very unhappy, that my box containing Hesp. scand. exicc. is lost under the way. I have sent

it by the post already April 16, 1881,  
so it is plenty of time for its reaching  
you. Perhaps you have now got it,  
if so, tell me it forrest? If not,  
ask for it at the railway or at the  
post office, and beg the officers  
to send out an acknowledgement of  
the loss of the box. I have done it  
before, but will do it once more.  
Also an another copy is lost, the one  
to Dr. Asa Gray in North America,  
sent  $2\frac{1}{2}$  years ago. Really I do not  
know what to do. The parcel was sent  
paid to you the whole way and on  
your own risk. But you have paid  
it twice or with 70 francs, instead  
of 35 fr. Will you have an another  
copy for the rest of your money, or  
I have got a few left, or may I send  
back 35 fr. This winter I mean to  
publish parts 2 and 3 of my essays.  
Please tell me soon what you wish  
I may do! And tell me also in

! which way I have to send my commu-  
nications to you, if they are hea-  
vier parcels, because it is very  
disagreeable for me and you to  
lose in that manner. The safest  
way is, of course, the best, not  
the cheapest one.

Wishing to soon hear from you,  
I finish this letter by writing me

Yours affectionate

S. O. Lindberg

Phil. and Med. Dr.  
Professor.

I wish that I had to read up some  
information to you, if there was  
any possible, because it is very  
disagreeable for me to  
be in that manner. The right  
way is, of course, the best, but  
the best way.  
I wish to see you from you,  
I find the letter by writing on

Yours affectionately

A. B. King

Phil. and Mrs. Dr.  
Professor.

Musci a S. O. L. Determinati.



- n.º 9. *Funaria hygrometrica*. f. *Brizum capillare*.  
10. *Brizum atrorubescens*.  
× 1. *Barbula aboidea*.  
+ 2. *Fissidens incurvus*.  
× 3. *Pottia truncata* forma.  
× 4. *Polytrichum commune*.  
× 5. *Hypnum acutifolium*.  
× 6. *Barbula cuneifolia*.  
× 7. *B. membranifolia*.  
× 8. *B. muralis* forma.  
× 9. *B. ambigua*.  
× 10. *Mnium undulatum*.  
+ 11. *Thuidium alopecurum*.  
+ 12. *Mollia viridula*.  
+ 13. *Barbula laevipila*.  
+ 14. *B. muralis*.  
× 15. *Eurhynchium circinnatum* + *Rhyssospora confertum*.  
× 16. *Barbula cuneifolia*.  
+ v 17. Non missus!  
× 18. *Philonotis rigida*.  
+ 19. *Scleropodium illeceberrum* forma.  
× 20. *Leptotrichum subulatum*.  
v 21. Non missus!  
+ 22. *Funaria mediterranea*.  
× 23. *Hypnum cupressifolium*.  
+ 24. *Fissidens serrulatus*.  
+ 25. *Brizum* sp., sterile et indeterminabile.  
+ 26. *Barbula laevipila*.  
+ 27. *Funaria hygrometrica*.  
+ 28. *Eurostrodou fascicularis* ? det.  
+ 29. *Barbula cuneifolia*.

- + 30. *Fissidens serrulatus*.  
 + 31. *Grimmia orbicularis*.  
 + 32. " "  
 + 33. *Leptotrichum subulatum*.  
 + 34. (*Allalia*) *Trichostomum barbale*.  
 + 35. *Fissidens rupestris*.  
 + 36. *Barbula gracilis*.  
 + 37. *Jepsonia viridissima*.  
 + 38. *Brachythecium retinuum* + *Rhyssob. confertum*.  
 + 39. *Weylania viridula*.  
 + 40. " "  
 + 41. *Dicranella varia*. bis  
 + 42. " "  
 + 43. *Fissidens rupestris*.  
 + 44. " "  
 + 45. *F. bryoides*.  
 + 46. *Barbula convoluta*.  
 + 47. *Rhyssoglossum confertum*.  
 + 48. *Barbula laevipila*.  
 + 49. *Dicranella varia*.  
 + 50. " "  
 + 51. " "  
 + 52. *Hypnum quopidatum*.  
 + 53. *Barbula Valgii* + *aloides*.  
 + 54. *Leucodon sciuroides* (*B. monensis*).  
 + 55. *Barbula aloides*.  
 + 56. *Fissidens incurvus* + *Gymnostom. galcicum*.  
 + 57. *Bryum musale*.  
 + 58. *Fissidens serrulatus*.  
 + 59. *Pottia Starkei* (*B. brachyoda*).  
 + 60. *Barbula unguiculata*.  
 + 61. *Pogonatum novum*.  
 + 62. *Rhyssoglossum confertum*.



- + 63. *Fissidas polyphyllus*.
- + 64. *Dicranum scoparium*.
- + 65. *Weissia viridula*.
- + 66. *Trichostomum barbula*.
- + 67. *Barbula gracilis + alvada*.
- + 68. *Polytrichum juniperinum*.
- + 69. *Orthotrichum diaphanum*.
- + 70. *Weissia viridula*.
- + 71. *Rhynchostegium confertum*.
- X 72. *Entostegon erigitorum*.
- + 73. *Barbula unguiculata + Dicranella varia*.
- bis!! 73. *Fuzerium granulata*.
- 74. *Bryum Donii + Funaria Geyron*.
- + 75. *Dicranum scoparium*.
- + 76. *Hypnum compressiforme*.
- + 77. *Philonotis rigida*.
- X 78. *Weissia viridula*.
- + 79. *Fissidus serpulatus*.
- + 80. *Polytrichum juniperinum*.
- + 81. *Hypnum compressiforme*.
- + 82. *Bertrami stricta*.
- + 83. *Grimmia Schultzii*.
- + 84. *Scapania compacta*.
- V 85. *Fissidus firmus* n. sp.
- + 86. *Alnium Seligeri* Fur.
- + 87. *Hypnum filicinum* var. *fallax*.
- + 88. *Rhynchostegium muciforme*.
- + 89. *Amblystegium riparium*.
- + 90. *Rhynchostegium muciforme*.
- + 91. *Hedwigiidium giliatum*.
- + 92. *Weissia viridula*.
- + 93. *Rhynchostegium muciforme*.
- + 94. *Amblystegium serpens*.

- + 95. *Philonotis rigida*.  
 + 96. *Ucissia viridula*.  
 + 97. *Brachium atropurpureum*.  
 + 98. *Br. capillare*.  
 + 99. *Cryptaea heteromella*.  
 + 100. " " + *Orthotrichum tenellum*.  
 + 101. *Gymnostoman calycium*.  
 + 102. *Frotthecium myurum* + *Eurothyrium myosuroides*.  
 + 103. *Barbula cylindrica*.  
 + 104. *Ucissia viridula*.  
 + 105. *Leptodon sciuroides* var. *cylindrica*.  
 bis!! 105. *Fullonia tamarisci*. +  
 + 106. *Brachium argenteum*.  
 bis!! 106. *Calypogeia trichomanis* B. fissa. +  
 + 107. *Brachium argenteum*.  
 bis!! 107. *Figitella conica*. +  
 + 108. *Hypnum pubescentiforme*.  
 bis!! 108. *Pellia calycina* Steud. x  
 109. *Pleuridium subulatum*.  
 bis!! 109. *Lunularia vulgaris* c. fr. juv.  
 + 110. *Rhyssolobium confertum*.  
 bis!! 110. *Fullonia dilatata*. +  
 + 111. *Gymnostoman calycium*.  
 bis!! 111. *Fullonia dilatata*. +  
 + 112. *Pogonatum aboides*.  
 bis!! 112. *Blyttia Lyellii*. +  
 + 113. *Bartramia stricta*.  
 114. *Leptodon Smittii*.  
 + 115. *Barbula lovipila*.  
 + 116. *Leptodon Smittii*.  
 + 117. *Homolothecium sericeum*.  
 + 118. *Pterogonium sprengii*.  
 + 119. *Bartramia stricta*.



- 113. *Riccia Huebeneri* Lindenb. ♀ fr. matur.
- 114. *R. Lesquerentii* Aust.
- 115. *Trichosolenia tomentella*.
- 116. *Radula aquilizia* ♂ et ♀ ales.
- 117. *Riccia bifurca*.
- 118. *Radula aquilizia* ♀ ster. gonidiifera.
- 119. *Riccia crystallina* forma maxima.
- 120. *R. bifurca*.
- 121. *Grimmia dichotoma*.
- 122. *Riccia bifurca*.
- 123. *Radula aquilizia*.
- 124. *Anthoceros punctatus*.
- 125. *Cheiloscyphus polyanthos* + *Feridans pusillus*.
- 126. *Riccia giliata*.
- (127 non est accepta !)
- 128. *R. Huebeneri*.
- 129. *Riccardia pinguis*.
- (130 non est accepta !)
- 131. *Riccia glauca*.
- 132. " "
- 133. *Rantia galypogea*.
- 134. *Turgenia nana*, pericha ster.
- 135. *Nardia emarginata*.
- 136. *N. granulata* var.
- 137. *Scapania undulata* var. *integrifolia*
- 138. *Tung. (Nardia) granulata* var.

- 139 & 140. *Nardia sphaeclata*.  
 141. *Scapini subalpina* + *N. conyzinata*.  
 142. *Sc. undulata* var. *intyriifolia*.  
 143. *Fuzermania ventricosa*.  
 144. *F. nana*, *perovica* etc.  
 145. *Scapini subalpina*.  
 146. *Nardia sphaeclata*.  
 147. *Scapini undulata*  
 148. *Sc. subalpina*.  
 x 149. *Fuzermania albicans*.  
 + 150. *Cephalozia bicuspидata*.  
 x 151. *Fuzerm. albicans*.  
 x 152. *Fz. circinata*

\* \* \*

179. *Zygodes viridissimus* St.  
 180. *Fissidens decipiens* G. Fr.  
 (181 fortiter non missa sit?)  
 182. *Peltia truncata*.  
 183. *Orthotrichum tenellum*.  
 184. *Dicranella varia*.  
 185. *Trichostomum tophaceum*  
 186. *Funaria hypomyctrica*.  
 187. *Barbula aloides*.  
 188. *Bryum atropurpureum*.  
 (189 - 192 mihi desunt!)



193. *Weissia viridula* + *Lejeunea inconstans* Dectot. !

194. *Hypnum myapolititanum.*

195. *Entosthodon Templetoni.*

196. *Lejeunea cavifolia*  $\beta$ . *plurimaculata.*

(197 non adest in collectione missa !)

198. *Weissia viridula*

199. *Barbula atrovirens.*

200. *Fissidens serrulatus.*

200. *F. boydii* var. *inclinata*.

201. *Weissia viridula* var.

203 & 204. *Nardia emarginata*  $\sigma$

205. *Catyarina undulata.*

206. *Pterogoblyllum lucas.*

(207 non est accepta !)

208. *Scapania nemorosa.*

209. *Pterogoblyllum lucas.*

(210 - 212 sunt absentes murgi !)

x 213. *Funaria albicans.* 0

aliu ! " *Aulacomnium palustre.*

x 214. *Gymnomitrium galgareum.* 0

aliu ! " *Grimmia patens.*

x 215. *Bryum argenteum - lineatum.* 0

aliu ! " *Hypnum loreum.*

x 216. *Weissia viridula.* 0

aliu ! " *Philonotis fontana.*

- x 217. *Barbula rigidula*. 0  
 alii! " *Hypnum rusziforme*.  
 x 218. *Barbula unguiculata* f. *robusta*. 0  
 alii! " *Philonotis fontana*.  
 x 219. " " " " 0  
 alii! " *Dislobyllum* (Fung.) *albicans*. 0  
 x 220. *Eurostichum ericetorum*. 0  
 x 221. *Ditichum fulvatum*. 0  
 alii " *Rhacomitrium lanuginosum*.  
 x 222. *Hypnum fluitans*.  
 alii " *Eurostichum ericetorum*. 0  
 223. *Isoetesium Borreri* (Spruc.)  
 224. *Bartramia paniciformis*.  
 225. *Dicranum Blyttii*. 226 deest!  
 227. *Loboselia bidentata-cuspidata*.  
 228. *Polytrichum alpinum*.  
 229. *Hypn. rusziforme*.  
 230. *Dicranum Blyttii*.  
 231. *Philonotis fontana*.  
 232. *Dicranum Blyttii*.  
 233. *Rhacomitrium lanuginosum*.  
 234. *Hypnum rusziforme*.  
 235. *H. fluitans*.  
 236. *Brachium alpinum*.  
 237. *Fontinalis antipyretica*.  
 238. *Barbula ruralis*.  
 239. *Polytrichum alpinum*.  
 240. *Fontinalis antipyretica*.