

Publ. no. vol. IX



Fungi Lusitani

collecto a Cl. Viro Adolpho Fr. Moller anno 1890.

recensuit

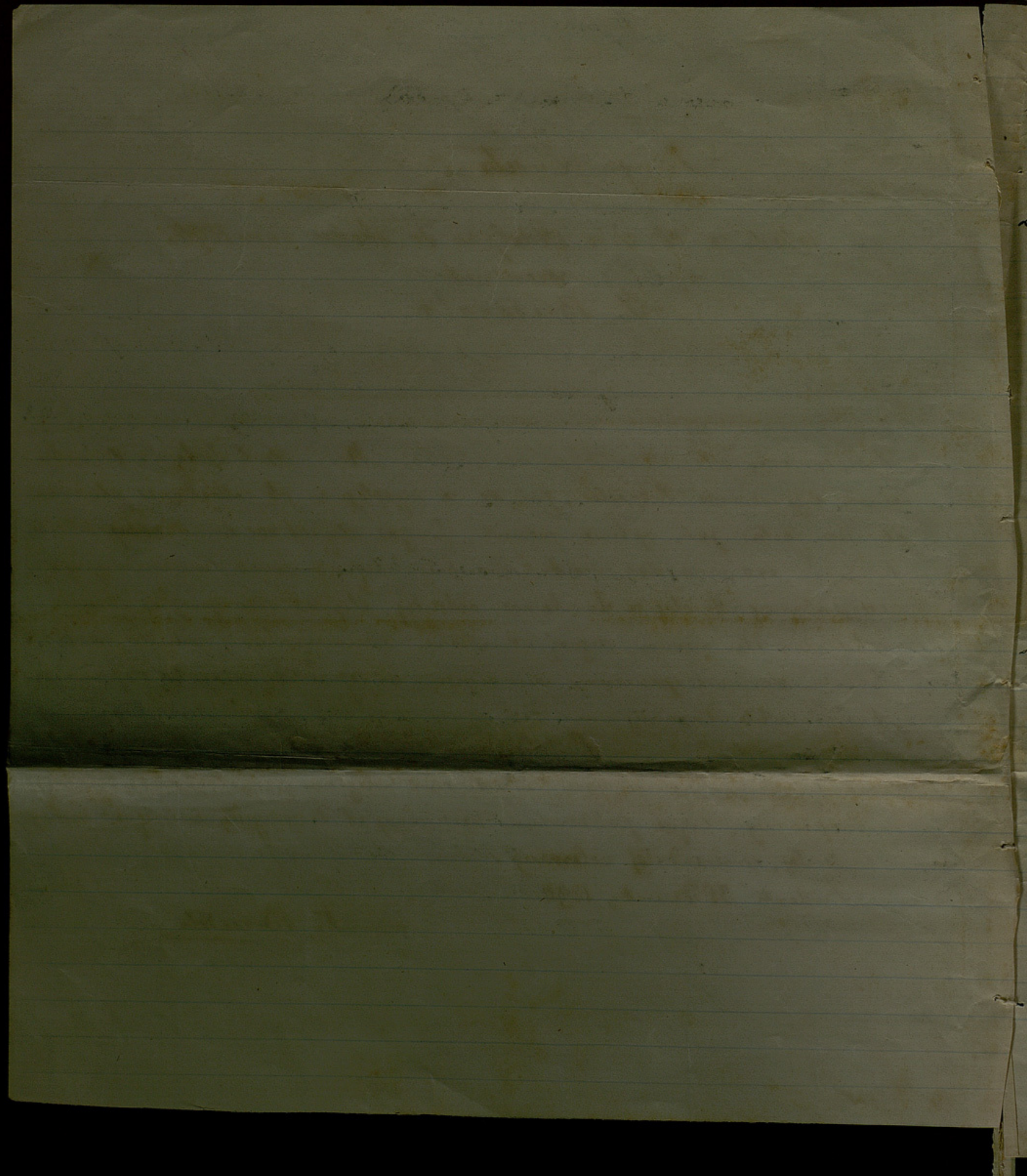
G. Bresadola

Clarissimus Vir Adolphus Fr. Moller, Regii Horti Botanici Coimbricensis dignissimus Inspector, qui de re mycologica ob collectiones plurimas ab ipso factas jam optime meruit, fungos aliquot hoc anno ~~et~~ collectos benevole examinandos misit. In his aliquas novas invenimus species, aliquas Mycologiae Lusitanae addendas, aliquas vero propter locum, substratum etc. novum dignas, ut iterum enumerentur; quibus de causis harum omnium specierum recensionem in sequentibus plagulis depromere haud inutile duximus.

Pracelaro et diligentissimo Scutatori, ut dierum virumque affatum habeat, ad fungorum patriae suae collectionem integram perficiendam, enixe exoptamus, eique potissimum Agaricinae et Discomycetae, hucusque minus exploratae, commendatae volumus.

Tridentis 31 Decembris 1890

G. Bresadola



Hymenomyces

UNIVERSIDADE DE COIMBRA
BIBLIOTECA
BOYDILLER

1. Schizophyllum commune Fr. Syst. Myc. I p. 333, Hym. Europ. p. 492. Sacc. Syll. V, p. 655.

Hab. ad truncos prope Coimbra —

2. Boletus mitis Krombh. tab. 36 f. 8-11. Fries Epic. p. 411. Hym. Europ. p. 499. Sacc. Syll. II p. 6.

Hab. ad terram prope Coimbra.

Obs. Species haec meo sensu minime autonoma, et vix a Bolet. bovine Linn. specie distincta, in quam per formas innumerarum transit. Etiam sporae, bipidae, et cellulae hymeniales omnino conveniunt. Typica forma differt statura minore, et pileo saturatius colorato. Sporae tubulosae, subuniformes, lateraliter depressoae, 9-11x3.

3. Polyporus adustus (Willd.) Fr. Syst. Myc. I, p. 363, Hym. Europ. p. 549. Sacc. Syll. VI, p. 125. Boletus Willd. Berol. p. 392.

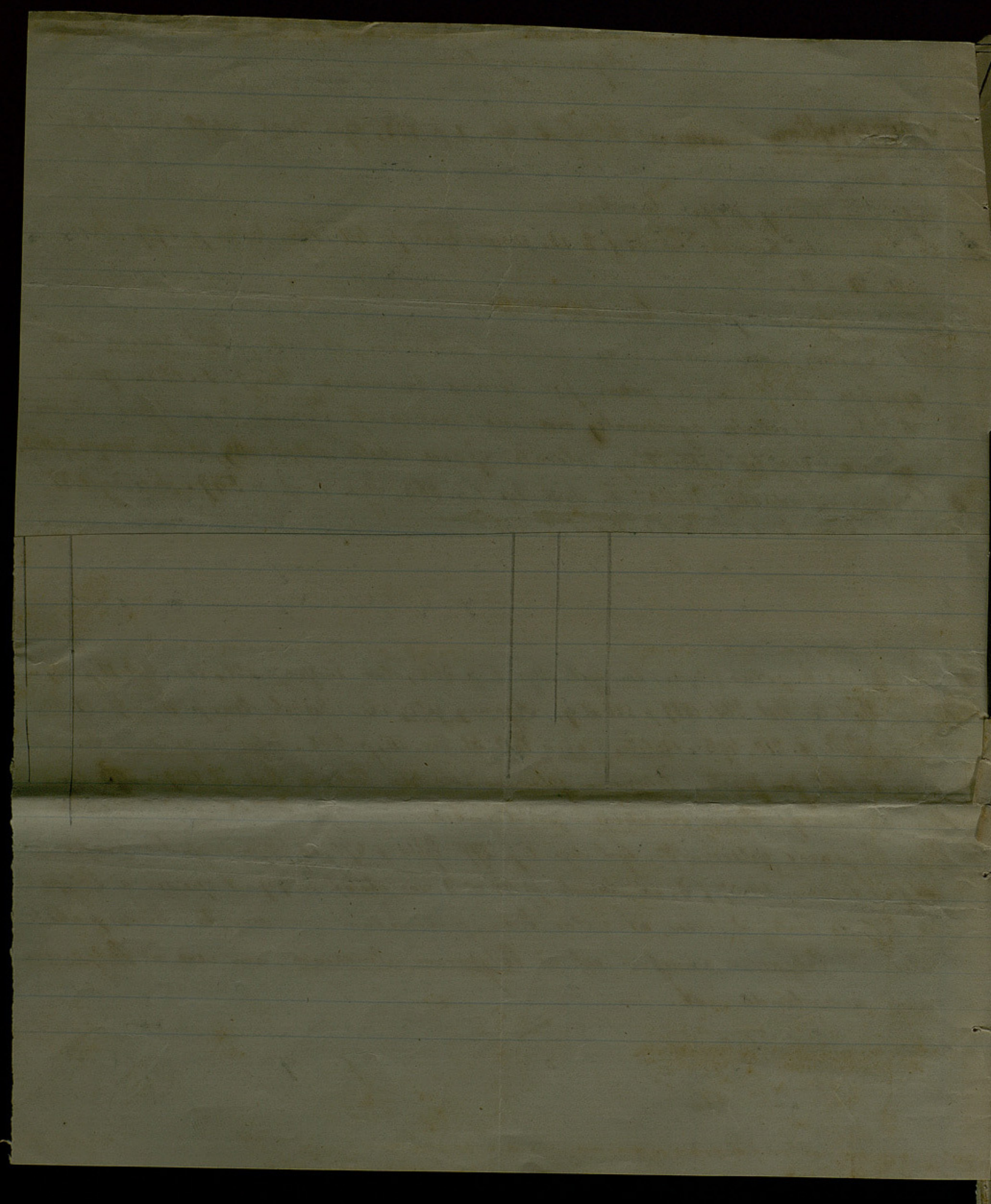
Hab. ad ligna pr. Coimbra.

Obs. Sporae hyalinae, obovatae, vel subcylindraceae, 5 x 2 1/2 μ . —

4. Polyporus hispidus (Bull.) Fr. Syst. Myc. I p. 362, Hym. Europ. p. 551, Sacc. Syll. VI p. 129. Berksp. Bull. Soc. Bot. Ital. 1889 p. 526 et seq. Agaricus gelsii Micheli Gen. p. 118 n. 7. Boletus hispidus Bull. t. 210, 493. Boletus flavus Pall. Fl. Ver. III, p. 608. Polyporus gelsorum Fr. Hym. Europ. p. 562 pro parte. Polyporum gelsorum Martelli Boll. Soc. Bot. Ital. 1889 p. 293 et seq.

Hab. ad truncos Pruni domesticae pr. Coimbra.

Obs. Polyporus gelsorum Fr. Syst. Myc. I p. 377, Epic. p. 470, et Hym. Europ. l.c. pro parte ~~et~~ (ex Battarra tab. 37 f. D, et Micheli p. 118 n. 3, nec obstat n. 4) est species a Polyporo hispido Bull. diversa, et valde dubia, quia iterum non inventa. Valde probabiliter ad Polyporum annojum, vel ad Polyporum ulmarium, non vero ad Polyp. ignarium adscribenda est. —



5 Lanoderma lucidum (Leys.) Fr. forma apoda
Hab. ad truncos pr. Coimbra

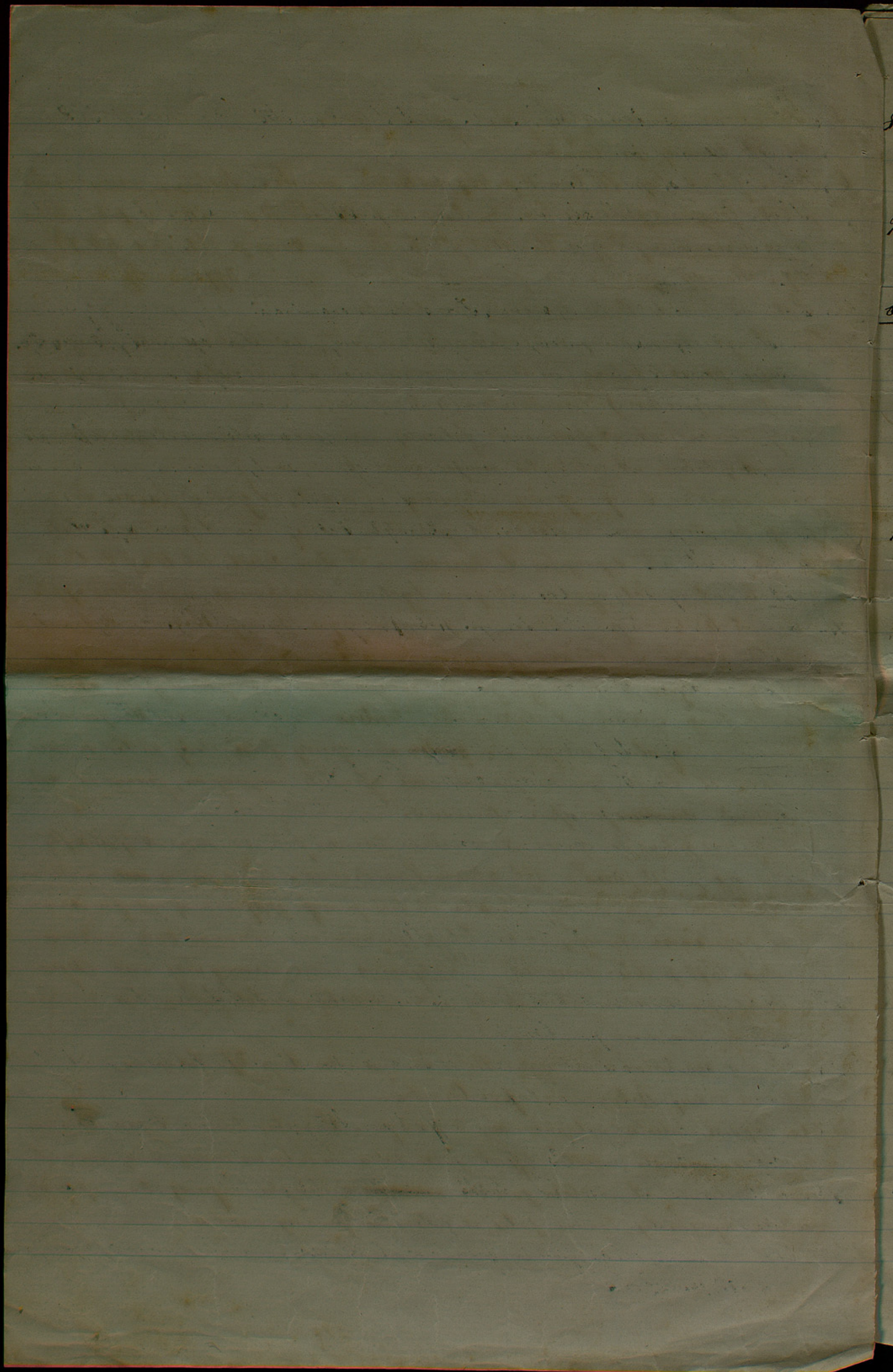
6 Tomes fulvus Scop. Fl. Carn. II p. 469 (sub Boletus) non Fr. Boletus pomaceus Pers. Syn. p. 538. Polyporus pomaceus Pers. Myc. Europ. II p. 84 cum ^{var.} p. prunastri ib. p. 85. Polyporus cinnamomeus Frag in Flora 1832 p. 556. Fr. Hym. Europ. p. 561. Sacc. Sylt. VI, p. 169. Placodes ignarius var. pomaceus Quel. Flor. Mycol. p. 399.
Hab. ad truncos Pruni domesticae pr. Coimbra.

Obs. Fungus hinc primo distat luberulos vel peltas suborbiculares late marginatas, centroque porosas, fulvas (in Ceraso et Persico) vel flavido-fulvas, mox canescentes, (in Pruno, piro etc.) tomentosulas, 4-6 cm. latae. Demum utraque forma ad marginem canescit, et poris modo fulventes, modo cinnamomei, vel griseo-cani evadunt; tubuli et substantia semper fulvo-brunnea. Quotannis, nova additur zona concolor, hincque zonae antiquiores nigricantes et glabrae fiunt. Forma fungi hinc hinc non constans, sed generatim subtriquetra et protracta, late adnata, exacte uti depingitur P. sturneus in Fr. Icon. Select. tab. 184 f. 2. Cutis concreta, ut in Pol. ignario, et sporae hyalinae, subsphaericae, uno latere applanatae 5-6 x 4 1/2 - 5 μ . - Ubique in pomariis frequentissimus, praesertim ad Prunif, et certe ad speciem scopolianam, quoque in Ceraso ^{ab} inventore detecta duci debet, si cum ejus diagnosi l. c. fungus junior comparatur. Descriptio Scopoli ^{etiam} ~~etiam~~ statum fungi Silanici, ut clare patet, latetum respicit, nam de forma stratosa non loquitur; insuper via quaedam alia speciei fulvicoloris in Ceraso invenitur. A Tome ignario, quocum arte affinitate conjungitur, forma et modo crescendi ~~diversus~~ praecipue diversus.

Polyporus fulvus Fr. species est admodum diversa, forte, ut suspicit Quellet. (Cf. Flor. Myc. p. 392) hinc a Pol. rhexide Pers. diversa. Polyp. fulvus ~~non~~ auctorum recentiorum ex gr. Hartig, Schroeter Fl. Schl. p. 487 quoque a specie friesiana et scopoliana diversus, et ad Polyp. ignarium var. Prunum Miki in Bevue Myc. 1890 p. 105 ducendus. - Polyporus cinnamomeus Frag vero absque dubio, prout etiam ab auctoribus est intellectus, ad Pol. fulvum Scop. vetustum adscribendus.

~~7. Tomes conchatus Pers. var. Pisbis Fr. Syn. Myc. I p. 375 (ut species)
Hab. ad radices Pisbis pr. Coimbra.~~

~~Obs. Sporae luteolae, subsphaericae, 3-4 x 3 μ . Varietas haec a typico Tome conchato Pers. in statu adulto differt pileo sulcis concentricis minus conspicuis, et colore umbrino; at in statu juniori ~~omnino~~ distingui nequit; etiam sporae, cellulae hymeniales, trama pilei, et cuticulae prorsus eadem.~~



8 Polystictus versicolor (Linn.) Fr. Syst. Myc. I, p. 368, Hym. Europ. p. 568
Sacc. Syll. VII, p. 253.

Hab. ad truncos Pini pr. Coimbra -

9. Trametes Pini (Brot.) Fr. Syst. Myc. I, p. 336, Hym. Europ. p. 578. Sacc. Syll.
VII, p. 245. Boletus Brot. Lus. II, p. 268.

Hab. ad truncos Pini maritima pr. Coimbra.

Obs. Specimina hic exhibita prorey typica. Sporas iterum examinari sub aqua cum glicerina commixta, et eas inveniri prorey hyalinae, subsphaericae, uno latere applanatae, 5-6 x 4-5 μ . In hymenio adhaerent quoque setae fulvae, cuspidatae, basi ventricosae, 30-50 x 8-12 μ , prorey ejusdem formae et coloris setarum generis Hymenochaetes. Trametes abietis Karsten, quaecumque comparari, differt tantum forma pilei convexo-superappanata, de cetero in omnibus convenit, etiam sporis, setulis, conformatione hymenii etc. ita ut seu varietas tantum Tram. Pini consideranda sit. -

10. Stereum purpureum Pers. Obs. Myc. 2, p. 92. Fries Hym. Europ. p. 639. Sacc. Syll. VII, p. 563.

Hab. ad ligna pr. Coimbra.

11. Stereum hirsutum (Willd.) Fr. Ep. p. 549, Hym. Europ. p. 639. Sacc. Syll. VII, p. 563.

Hab. ad ligna pr. Coimbra.

12. Stereum Pini Fr. Epoc. p. 553. Hym. Europ. p. 643. Sacc. Syll. VII, p. 574
Thelephora Fr. Syst. Myc. I, p. 443.

Hab. ad ramos Pini maritima pr. Coimbra

Obs. Spores hyalinae, cylindricae, curvatae, 7-9 x 2-2 1/2 μ . Peltae primordiales orbiculares, parvae, roseae, margine libero, albo-fimbriato, dein unicolorae carneo-fuscescentes. -

Gasteromycetaceae

13. Bovista nigrescens Pers. Dispos. p. 6. Sacc. Syll. VII, p. 99.

Hab. ad terram pr. Coimbra

14. Lycoperdon excipuliforme Scop. Carn. p. 488. Sacc. l. c. p. 108

Hab. ad terram pr. Coimbra

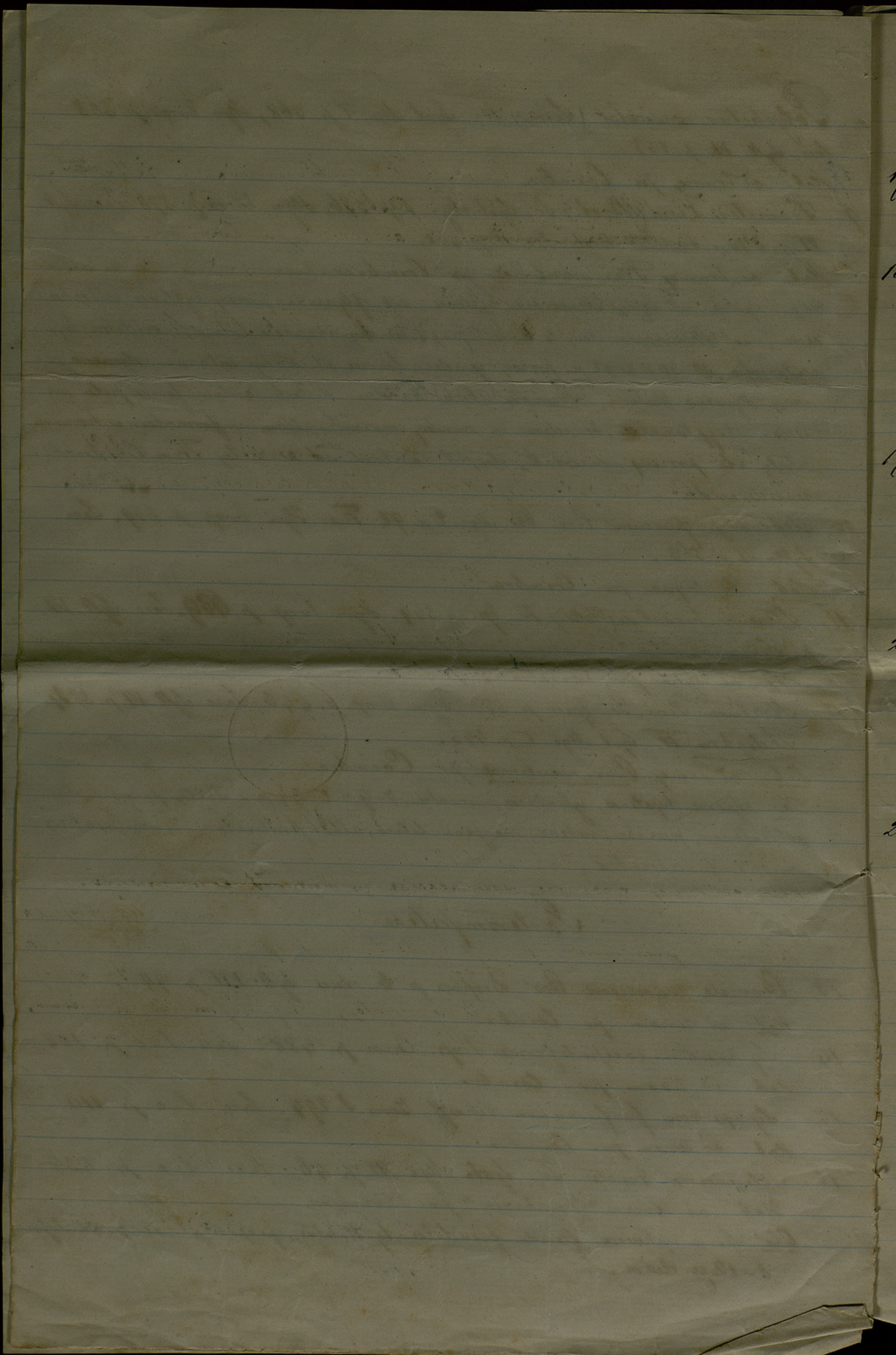
15. Lycoperdon fulguraceum Schaeff. Geon. I. 294. Sacc. l. c. p. 110

Hab. ad terram pr. Coimbra

16. Scleroderma Geaster Fr. Syst. Myc. III, p. 46. Sacc. l. c. p. 438

Hab. ad terram "Lombardia" pr. Coimbra.

Obs. Spora sphaerica, flavido-fuscululae, squattulatae, episporio laxo granuloso 8-12 μ diam. -



UNIVERSIDADE DE COIMBRA
BIBLIOTECA
BOTANICA

Hypodermaceae

17. Puccinia suaveolens (Pers.) Nostr. in Forhandl. skand. naturf. 11, ~~Lac.~~
möde i Köpen 1874. Winter de Pilze p. 189. Sacc. Syll. VII, p. 633.
Hab. in foliis ~~Plantaginis~~ ^{Cirsii arvensis} "Buarcos" pr. Coimbra -
18. Puccinia Messneriana Thum. in Myc. univ. n. 834. Contrib. Fl. Lusit.
p. 11 n. 58. Sacc. Syll. l. c. p. 697 -
Hab. ad folia Rhamni Alaterni "Buarcos" pr. Coimbra.

Phycomycetaceae

19. Cystopus candidus (Pers.) Lev. in Ann. Sc. Nat. Ser. III, 1847 tom.
VIII, p. 371. Sacc. Syll. VIII, p. 234. Uredo candida Pers. Syn. p. 233.
Hab. in foliis Cardaminis hirsutae pr. Coimbra.

Siscomycetaceae

20. Periza coccinea Jacq. Austr. S. 169. Fr. Syst. Myc. II p. 79. Cooke
Myogr. f. 95. Sacc. Syll. VIII, p. 154.
Hab. ad unam pr. Coimbra.

Pyrenomycetaceae

21. Gibberella baccata (Walt.) Sacc. Mich. I p. 307 (ut subsp.) Syll. II p. 553
~~Phaeria~~ baccata Walt. Fl. Crisp. 4040.

Hab. ad ramos Robiniae pseudacaciae in Hort. bot. Coimbricensi.

Obs. Perithecia generatur in acervulis hemisphaericis, stipato-laciniatis conjunctis,
at etiam gressurulis deorsu gressuris tantum; ascosporae maturae ^{saepe} 5-6 septa-
tae. Stadium conidicum non videtur, sed in peritheciis macrostygosporas
hyalinas, oblongo-fusiformes, 3-5 septatas, utrinque ^{breviter} apiculatas invenimus.
A Gibberella pulicari et G. subinecta non videtur satis distincta.

Sphaeropsideae

22. Phyllosticta Camelliae West. in Kieckh. Fl. Crisp. I p. 416. Sacc. Syll. III
p. 25.
Hab. in foliis Camelliae japonicae "Quinta de Espinheiro" prope Coimbra.
Obs. Sporae ellipticae, hyalinae 6-7 x 4 p. —

23

24

25

26



23. Phyllosticta Arisari nov. sp. —

Mauntis epiphyllis, substrundis, fusculis; peritheciis gregariis punctiformibus, ~~subglobosis~~ ~~globosis~~ ~~conicis~~ ~~subprominulis~~ 90-150 μ ; sporulis cylindricis vel ellipticis, pallide olivaceis, guttulatibus 5-6 x 2½-3 μ . —

Hab. in foliis Arisari vulgaris "Cerca de S. Bento" pr. Coimbra.

24. Phoma oncostoma Thim. in Myc. Univ. n. 877. Sacc. Syll. III p. 69

Hab. in ramis corticatis Robiniae pseudacaciae in Hort. bot. Coimbricensi.

Obs. Sporae subfusoides, vel obovato-elongatae, utrinque attenuato-subobtusae, 8-10 x 2-2½ μ ; basidia filiformia primitivè recta, sed bene evolute hamata 18-25 x 1-1¼ μ . — Phoma Robiniae, et Phoma Pseudacaciae non videntur specificè distinctae. —

25. Phoma straeiformis Dur. et Mont. Alg. p. 603. Syll. n. 877. Sacc. Syll. III p. 130

Hab. in caulibus Pisini communis pr. Coimbra

Obs. Sporulae subellipsoideae, hyalinae, biguttulatae 6-7 x 2 μ . —

26. Plenodomus Mollerianus n. sp. —

Peritheciis carbonaceis, rigidis, subhemisphaericis, basi subapplanatis, ~~superficialibus~~ ~~superficialibus~~, glabris, atris, primum clausis, demum subtellectis, ~~ruptis~~ irregulariter ruptis, 3/4-1 mm. latis, contentu parenchymatico; sporulis hyalinis, subfusoides-cusvatis, utrinque subacutis, 6-8 x 1½-2 μ ; basidiis filiformibus, se. en hyphis filiformibus, ramosis vel subventricillato ramosis, compositis, duplo vel triplo quam sporulis longioribus. —

Hab. In foliis Eucalypti globuli "Cerca de S. Bento" pr. Coimbra.

Obs. Speciei admodum singulari duritie perithecii, et defectu veri ostioli. Aspectu exteriori Sclerotium simulat. Prof. Saccardo, cui specimine submissa potius pro Thomae specie haberet, ~~sed tamen~~ tamen generi Plenodomus tamen affinis. Ego vero interim huic generi adscribo. Perithecia in ~~his~~ sporulis ^{interdum} ex integro completa, quae conflabuntur ~~inter se~~ ~~inter se~~ videntur, prout de genere Beckia praedicatur, at in catenulis conjunctis non vidi. —

27

28

29

30

31

32

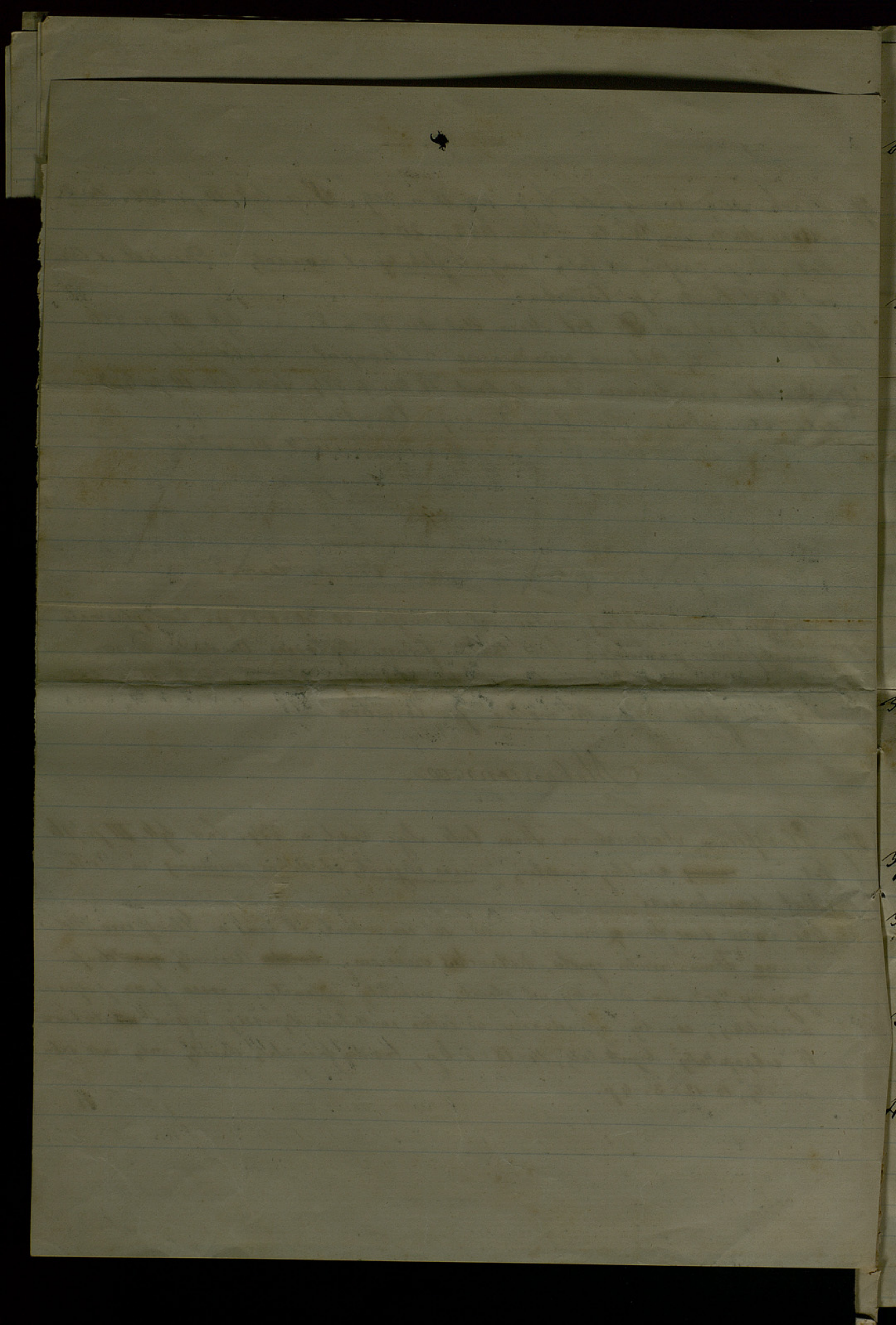


27. Harknessia eromycoides Speg. Arg. IV n. 309, Sacc. Syll. III, p. 320. Harknessia Molleriana Winter Hedw. 1883, p. 20.
 Hab. in pericarpis et foliis Eucalypti globulij et vininalij "Choupal et Cerca de S. Bento" pr. Coimbra -
28. Diplodia profusa De Not. Micr. Ital. Dec. IV. n. 8. Sacc. Syll. III, p. 336.
 Hab. in ramulis Robiniae pseudacaciae "Choupal" pr. Coimbra.
29. Diplodia arundinacea Dur. et Mont. Fl. Alg. p. 574. Sacc. Syll. III p. 373.
 Hab. intra culmum Arundinis Donacij Coimbra.

30. Septoria exotica Speg. F. Arg. Pug. II n. 107. Sacc. Syll. III, p. 533.
 Hab. in foliis Veronicae speciosae in Horto bot. Coimbra.
 Obs. Specimen nostrum maculas amphigenas superne candidas, zona lata fuscopurpurecente cinctas, inferne fuscas, etc. exhibet, prout a Spegazzini l. c. descriptus, sed sporulae sunt bacillari-cylindraceae, attingue obtusae, (non fusiformi-acutatae), rectae, vel flexuosae, 20-30 x 1-1 1/2 μ ., protoplasmate minutissime granuloso. Forte tantum forma Septoriae Veronicae Desm.
31. Septoria Acanthi Thüm. Contrib. Myc. Lus. I p. 25. Sacc. Syll. III p. 535
 Hab. in foliis Acanthi mollis pr. Coimbra -

Melanconiae.

32. Gleosporium Mollerianum Thüm. Contr. Myc. Lusit. n. 234. Sacc. Syll. III, p. 716.
 Hab. in ramis caulisque emortuis Liniae elegantis et Pisici communis in Horto Bot. Coimbricensi -
 Obs. Haec duae formae omnino inter se concordant, et vix a Gleosporio Molleriano Thüm. mihi ignoto, distinctas crederem. ~~Haec~~ Acervuli ~~spiculae~~ gregarii 1/4-1/2 mm. discoides, vel obovatis, variantibus, applanatis, e roseo fusco-purpureascentibus, conidiis cylindraceis, ad latera paululum depressis, inferne ~~sub~~ attenuato-subpapillatis, bignatis, 14-18 x 5-6 μ .; basidiis fasciculatis, elevatis, rectis, raro subcurvatis, 10-12 x 3 1/2-4 μ .





33. Mycosporium Kollerianum nov. sp. —
 Aconitij ~~epidermide~~ ^{epidermide} velatis, dimⁱⁿ ^{summe} ^{visis} ~~rimis~~ ^{verumpentibus}, griseo-fuscule, ellipsoideis,
 1/2 mm. latis; conidiis cylindricis, 1-2 guttulate, hyalinis, 18-20 x 5-6 μ ; caudis
 filiformibus, 10-12 = 2 μ . —
 Hab. in ramulis Cocculi laurifolii in Hort. bot. Comitricensi —

34. Blennoria novissima Rabenh. Fungi europ. exsic. n. 2698. Sacc. Syll. III,
 p. 431.
 Hab. in pinna foliorum Cycadis revolutae in Horto bot. Comitricensi.

35. Melanconium sphaerospermum (Pers.) Link Sp. pl. Fung. II p. 91. Sacc. Syll. IV
 p. 759. Stilbospora sphaerosperma Pers. Obs. I p. 31. —
 Hab. in culmis Bambusae mitis in societate Coniosporii Bambusae in Horto bot.
 Comitricensi —

Obs. A Coniosporio Bambusae offert tantum conidiis epidermide tectis, et in acon-
 itis, ellipsoideis confederatis, cetera omnia concordat. Etiam cum Melanconio sphae-
rospermo in Arundine Phragmitis commune obvio plane convenit. Existens
 quod Melanconium sphaerospermum, Coniosporium Arundinis, inquisitum, et Bambusae
 tantum formae nudae vel velatae ejusdem speciei sunt —

36. Pestalozzia Eucalypti Thüm. Contr. Myc. Lus. n. 579. Sacc. Syll. III, p. 785
 Hab. in foliis Eucalypti piperitae "Choupal" pr. Coimbra —

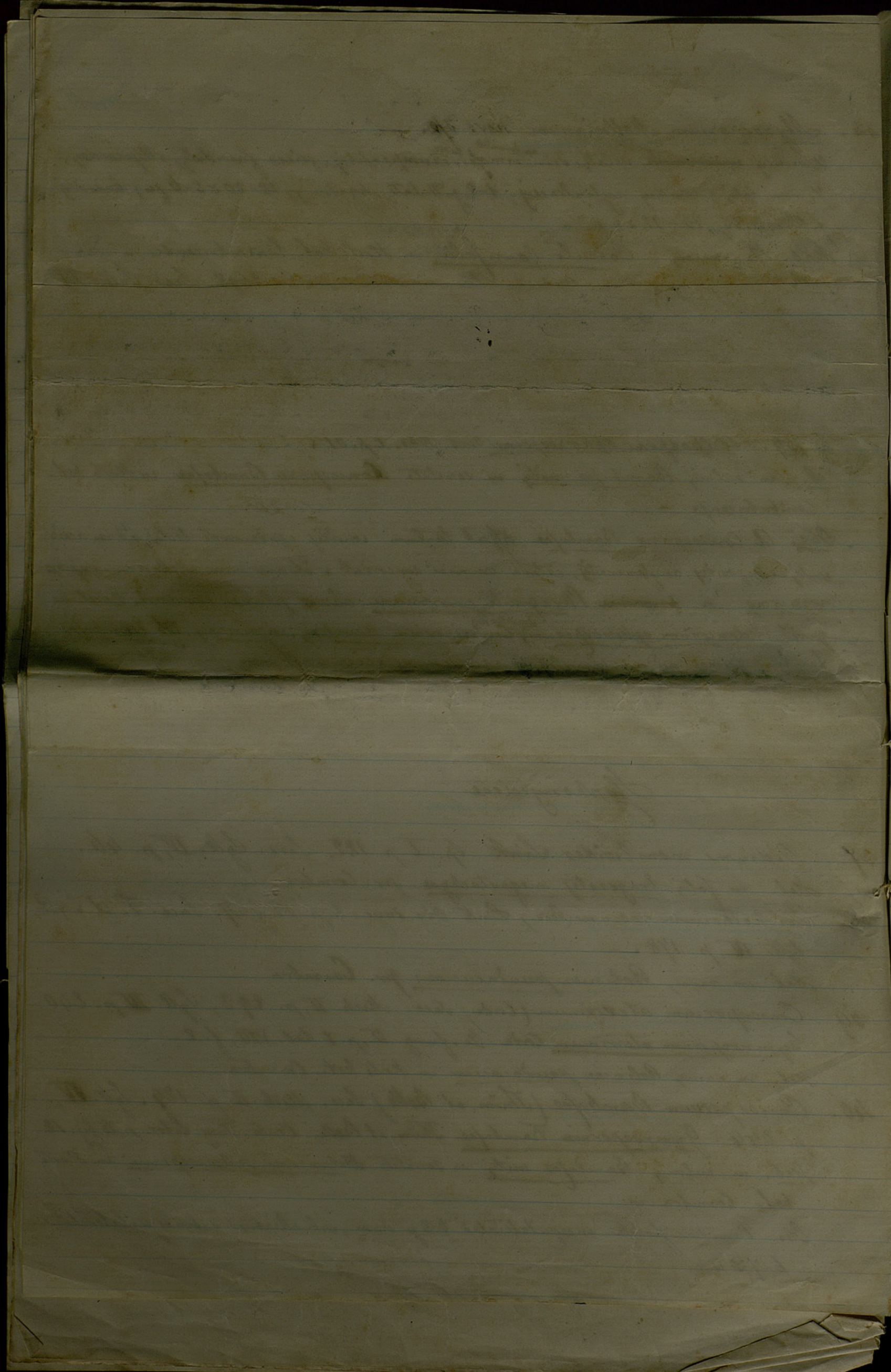
Hyphomycetae

37. Oidium monilioides Link Sp. I, p. 122. Sacc. Syll. IV, p. 46.
 Hab. in foliis Eragrostis megastachyae pr. Coimbra —

38. Psichothecium roseum (Pers.) Link Obs. Myc. I, p. 16 f. 24. Sacc. F. it. t. 956,
 Syll. IV, p. 178. —
 Hab. in ramis Robiniae pseudacaciae pr. Coimbra —

39. Coniosporium aterrimum (Corda) Sacc. Mich. II, p. 293, Syll. III p. 240.
Gymnosporium aterrimum Corda Ge. fung. II, p. 1 tab. VIII, f. 2.
 Hab. in ramis Robiniae pseudacaciae in Horto bot. Coimbra —

40. Coniosporium Bambusae (Thüm. et Rolle) Sacc. Mich. II p. 124. Syll. IV,
 p. 244. Gymnosporium Bambusae Thüm. et Rolle Contr. Fung. Litor. p. 6 fig. 12.
 Hab. in culmis Bambusae mitis in societate Melanconii sphaerospermi in Horto
 bot. Coimbra —
 Obs. Conidia globosa inaequilateralia 6-8 μ diam., vel elliptica subaequilateralia
 6-7 x 4 μ .



4

4

4

40

40

40

41. Torula herbarum Link Sp. pl. Fung. I, p. 128. Sacc. Syll. IV, 256.
Hab. in caulis herbaceis. in Hort. Bot. Coimbra

42. Cladosporium herbarum (Pers.) Link Obs. Myc. II p. 37. Sacc. Syll. IV, p. 350.
Hab. sub variis formis in foliis Ficksoniae igneae, Pelargonii peltati; Eugeniae Sassafrasii et Eucalypti globuli pr. Coimbra

43. Macrosporium commune Rabenh. Fungi Europ. n: 1360. Sacc. Fungi Ital. 4. 1207. Syll. IV, p. 524.

Hab. in foliis Gladioli segetum "Cerca de S. Bento" pr. Coimbra.

Obs. In hac forma hyphae fasciculatae, septatae, olivaceae, 80-100 x 4-5 μ .; conidia obovata, vel subellipsoidea, 3 septata, ad septa subconstrieta subconstrieta, uno alterove septo transversali, olivacea, granulosa-asperula, 20-30 x 7-12 μ .

44. Fusarium oxysporum Schlecht. var: aurantiacum Corda in Sturm D. C. F. t. 8. Sacc. Syll. IV 705.

Hab. in epicarpio putris Cucurbitae Coimbra

45. Fusarium Ricini (Ber.) Bizz. Fl. Ven. Fung. p. 539. Sacc. Syll. IV, p. 711. Fusisporium Ricini Bereng. Critt. Ric.

Hab. in caulibus Ricini communis pr. Coimbra

46. Epicoecum neglectum Desm. Ann. Sc. Nat. XVII p. 95. Pongiz in Fungi Ital. tab. 1217. Sacc. Syll. IV, p. 737.

Hab. in foliis Eucalypti globuli "Zombaria" pr. Coimbra



