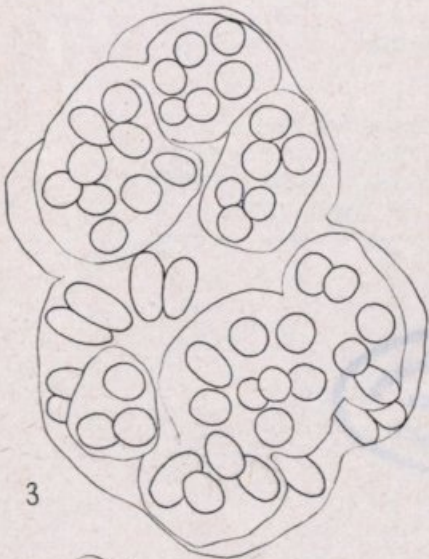


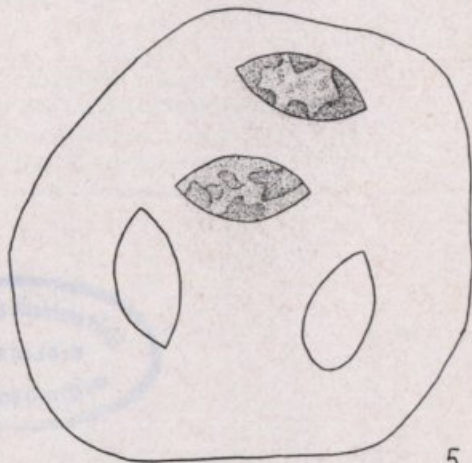
1



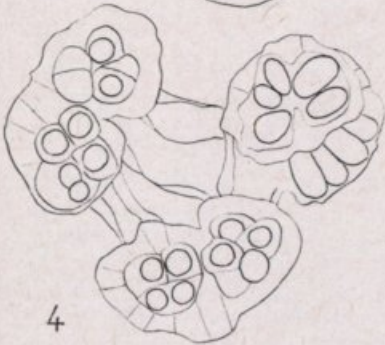
2



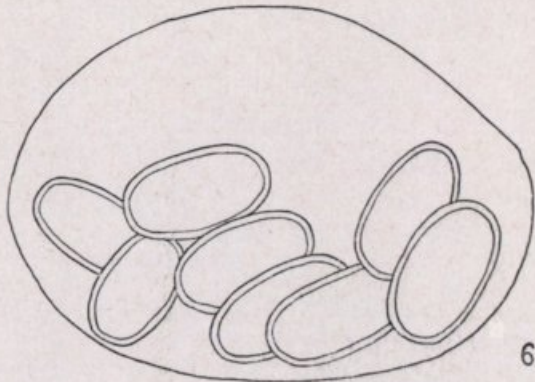
3



5



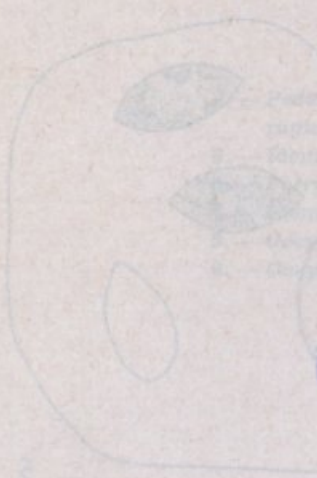
4



6



EXEMPLO VI



Podium pinnatifidum (L.) Sw. G. A. Smith
Podium pinnatifidum (L.) Sw. G. A. Smith
Podium pinnatifidum (L.) Sw. G. A. Smith
Podium pinnatifidum (L.) Sw. G. A. Smith
Podium pinnatifidum (L.) Sw. G. A. Smith
Podium pinnatifidum (L.) Sw. G. A. Smith



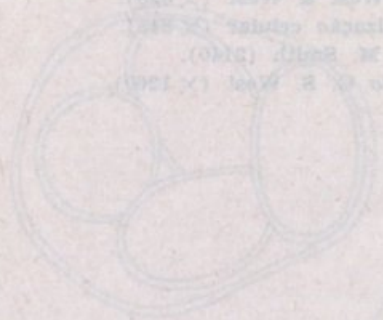
Universidade de Coimbra
 BIBLIOTECA
 INSTITUTO BOTÂNICO





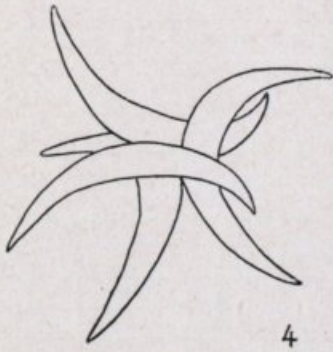
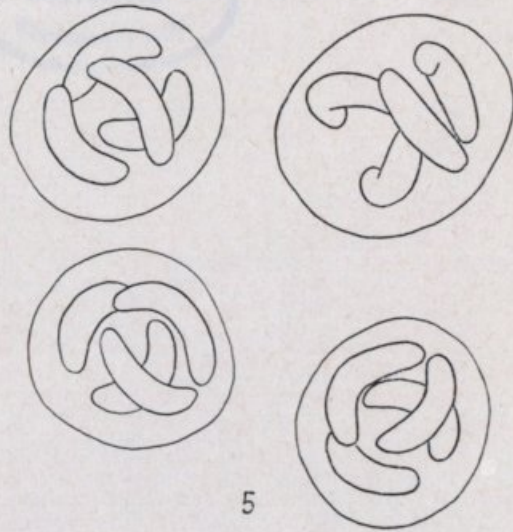
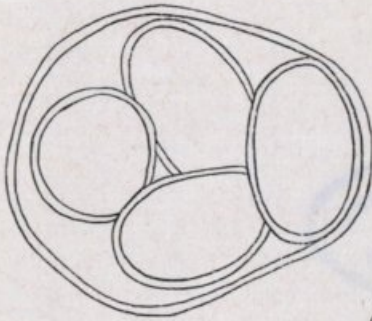
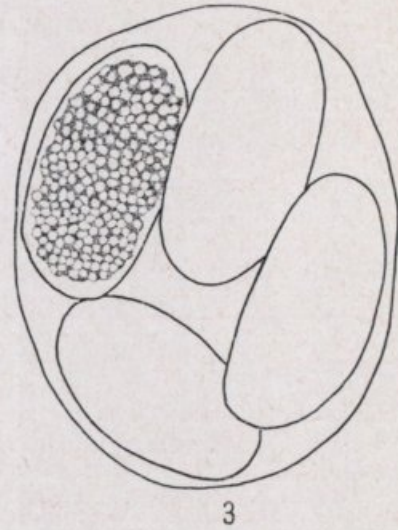
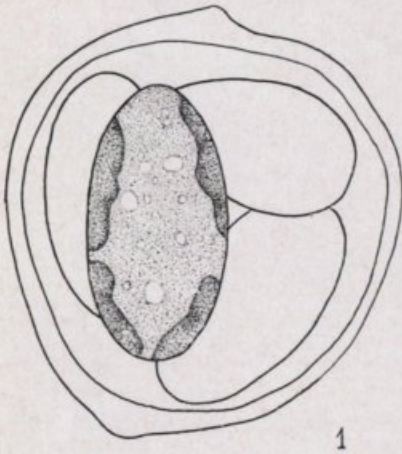
PLATE VII

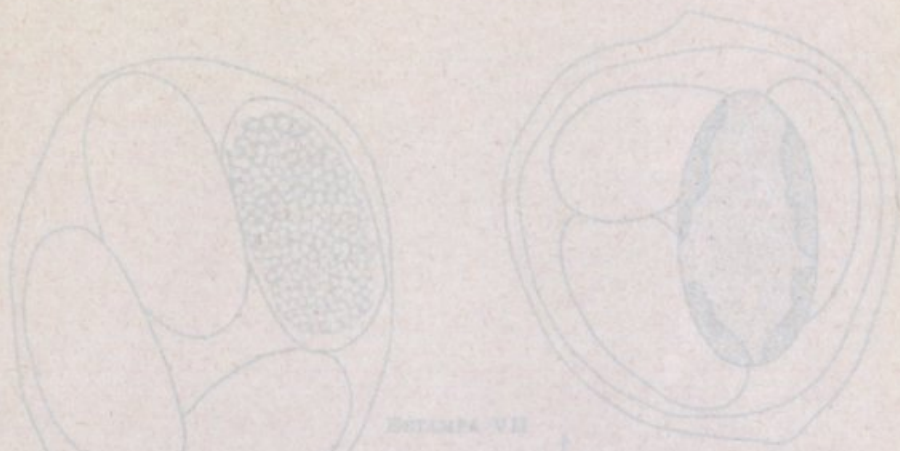
- 1 -- *Opuntia Yuccifolia* A. Braun (X 275)
- 2 -- *Opuntia Yuccifolia* A. Braun (X 275)
- 3 -- *Opuntia Yuccifolia* A. Braun (X 275)
- 4 -- *Opuntia Yuccifolia* A. Braun (X 275)
- 5 -- *Opuntia Yuccifolia* A. Braun (X 275)
- 6 -- *Opuntia Yuccifolia* A. Braun (X 275)
- 7 -- *Opuntia Yuccifolia* A. Braun (X 275)
- 8 -- *Opuntia Yuccifolia* A. Braun (X 275)



ESTAMPA VII

1. — *Oocystis Naegelii* A. Braun ($\times 975$).
2. — *Nephrocytium obesum* West & West ($\times 650$).
3. — Idem, mostrando organização celular ($\times 845$).
4. — *Selenastrum Westii* G. M. Smith (2140).
5. — *Kirchneriella subsolitaria* G. S. West ($\times 1260$).





BOTANICA VII

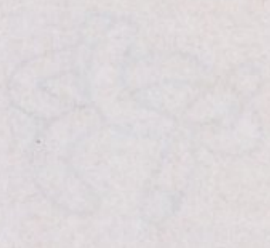
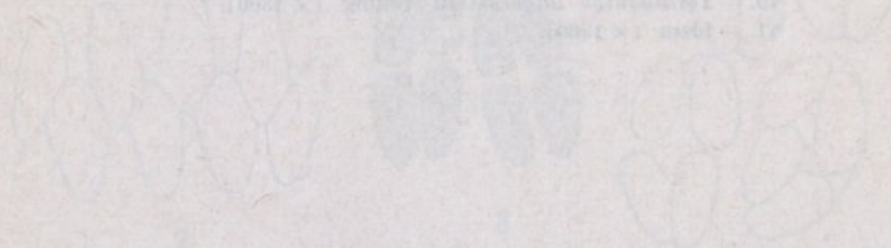
- 1. *Quercus* *Acuta* A. Braun (X 1750)
- 2. *Agropyron* *Chamae* West & West (X 500)
- 3. *Idem*, mediana organização e coloração (X 500)
- 4. *Salsolastrum* *Westii* G. H. Smith (X 1250)
- 5. *Hydrocotyle* *Antiochiensis* G. H. Smith (X 1250)





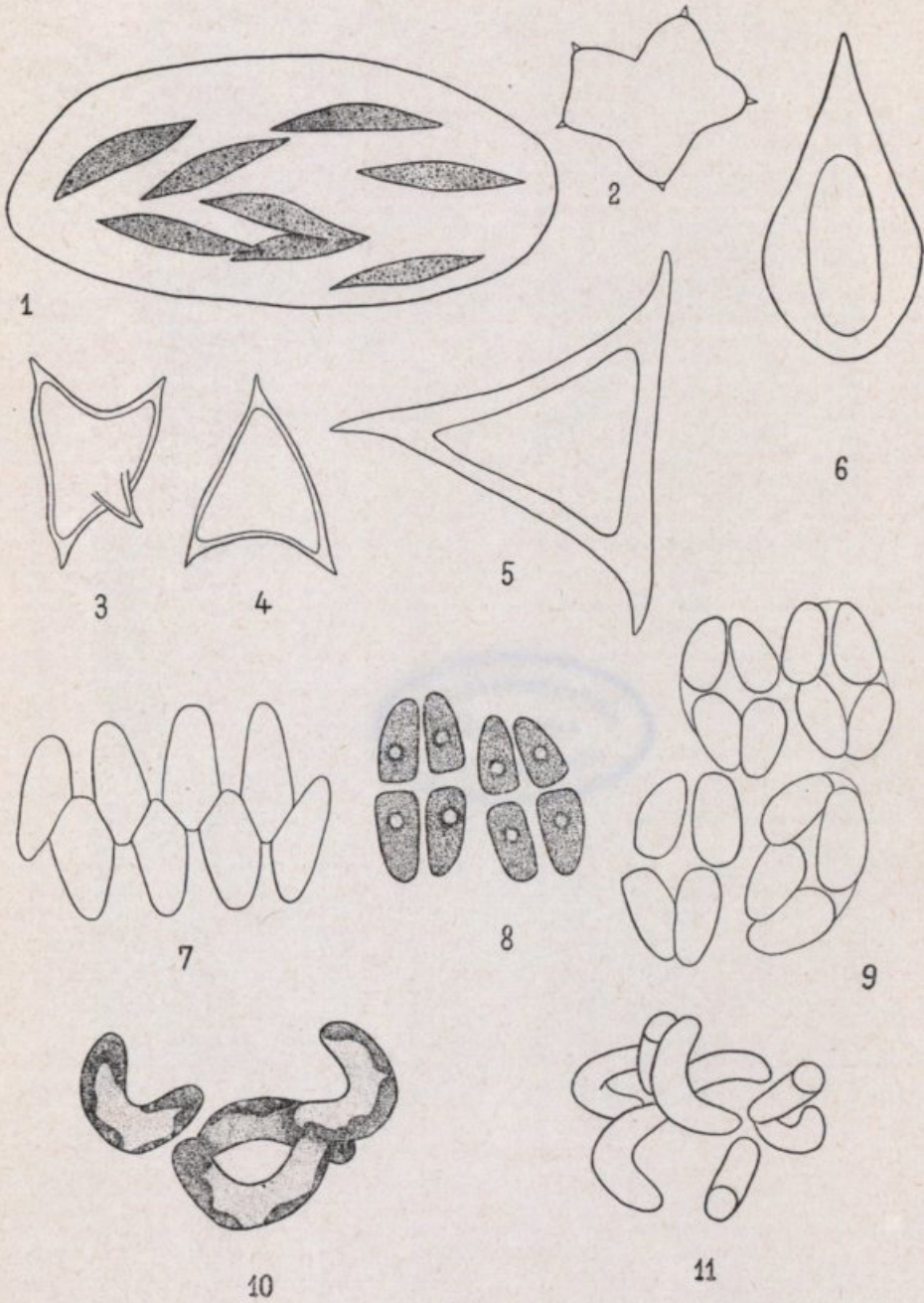
PLATE VII

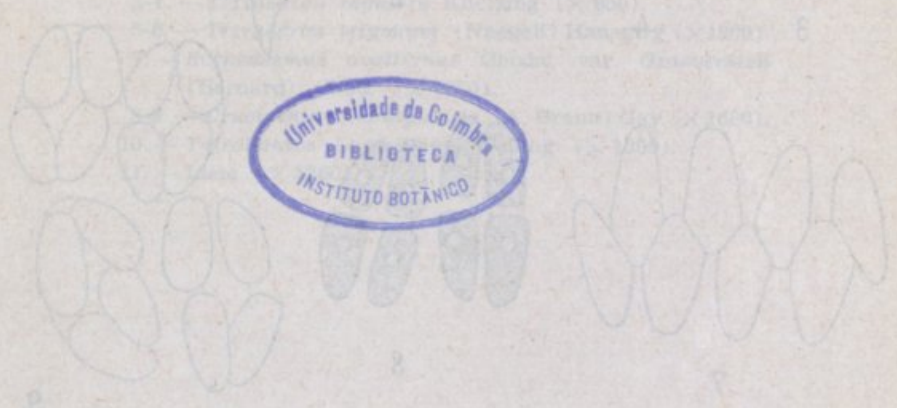
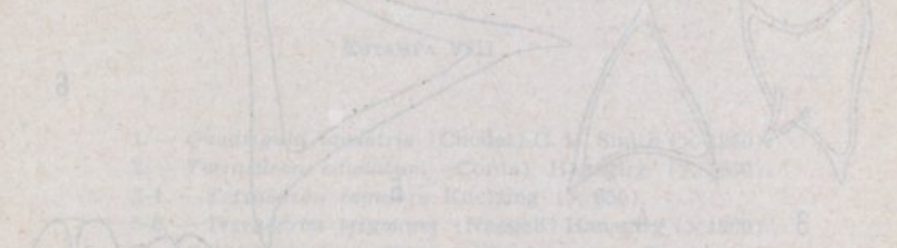
- 1. *Quercus laevis* (Willd.) R. Br. (1801)
- 2. *Quercus prinus* L. (1753)
- 3. *Quercus macrocarpa* (Mill.) B. S. P. (1845)
- 4. *Quercus bicolor* (Mill.) B. S. P. (1845)
- 5. *Quercus alba* (Mill.) B. S. P. (1845)
- 6. *Quercus coccinea* (Mill.) B. S. P. (1845)
- 7. *Quercus muhlenbergii* (Mill.) B. S. P. (1845)
- 8. *Quercus imbricaria* (Mill.) B. S. P. (1845)
- 9. *Quercus prinus* L. (1753)
- 10. *Quercus laevis* (Willd.) R. Br. (1801)



ESTAMPA VIII

1. — *Quadrigula lacustris* (Chodat) G. M. Smith (× 1260).
2. — *Tetraëdron caudatum* (Corda) Hansgirg (× 1680).
- 3-4. — *Tetraëdron regulare* Kuetzing (× 650).
- 5-6. — *Tetraëdron trigonum* (Naegeli) Hansgirg (× 1300).
7. — *Scenedesmus ovalternus* Chodat var. *Graevenitzii* (Bernard) Chod. (× 1260).
- 8-9. — *Crucigenia rectangularis* (A. Braun) Gay (× 1680).
10. — *Tetrallantos Lagerheimii* Telling (× 1300).
11. — *Idem* (× 1260).



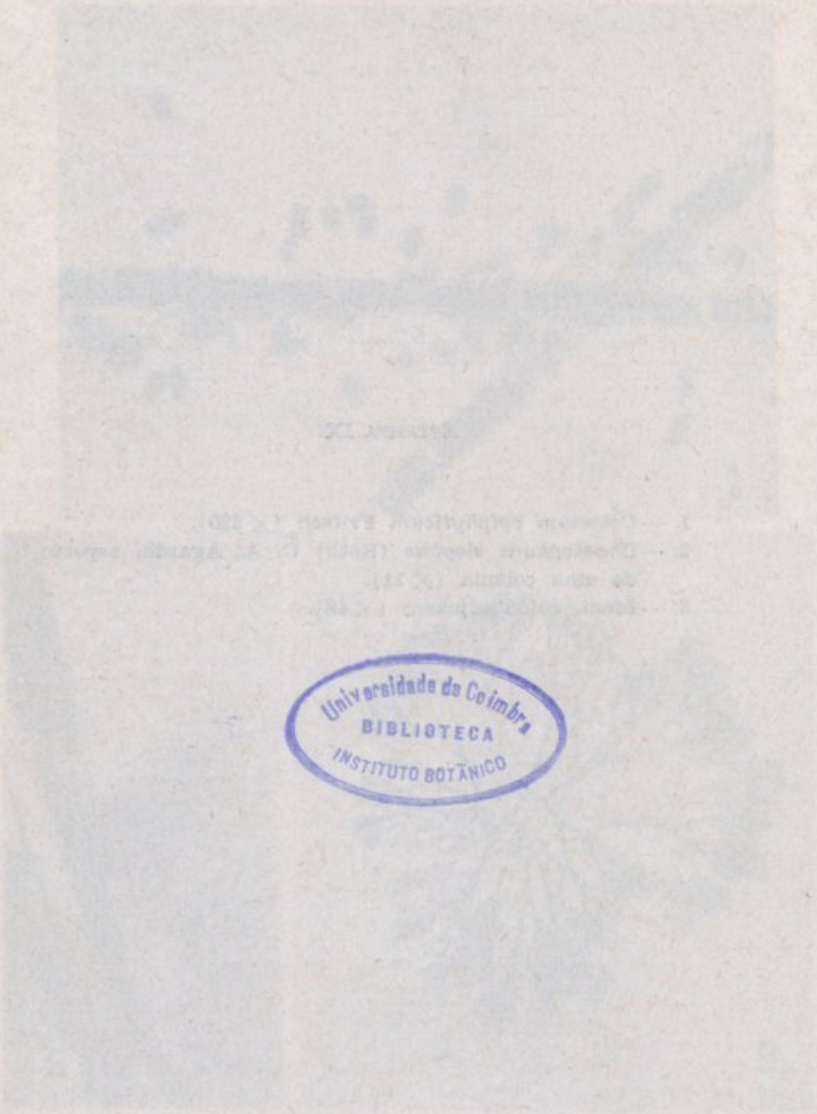


Universidade da Colômbia
 BIBLIOTECA
 INSTITUTO BOTÂNICO



i

j



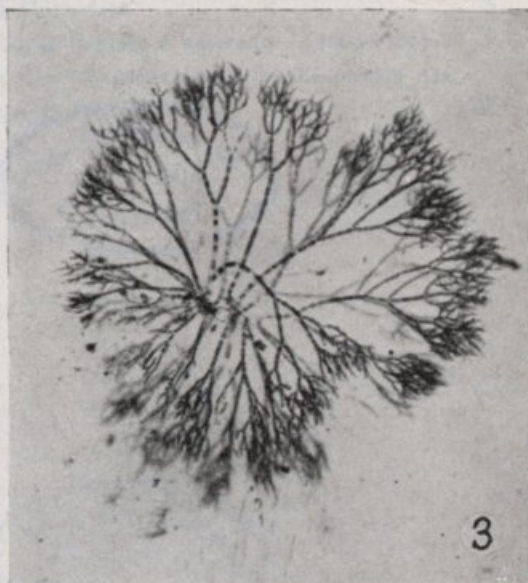
CONTENTS

- 1. The
- 2. The
- 3. The
- 4. The



ESTAMPA IX

1. — *Colacium epiphyticum* Fritsch ($\times 220$).
2. — *Chaetophora elegans* (Roth) C. A. Agardh, aspecto de uma colónia ($\times 11$).
3. — Idem, colónia jovem ($\times 48$).





ÍNDICE

Sessões da Sociedade Broteriana	5
BOURDON, L. — Lettres de Brotero à Valorado — (1808-1826) .	9
SANTOS, M. FÁTIMA — Contribuições para o conhecimento das algas de água doce de Portugal — I	87



INDICE

2	Associação da Sociedade Protestante
2	BOURDON, L. -- Litteras de Honra e Valoredo -- (1800-1820)
	SANTOS, M. FATIMA -- Contribuições para o conhecimento das
83	algas de água doce de Portugal

