

Helsingfors, March 21/81.

7(2)  
UNIVERSITÄTENS BIBLIOTEK  
Helsingfors

Dear Colleague!

To day I have finished the determination of all the sent Mosses and Hepatica; I was unable of doing it earlier, what you may excuse.

The sent Fissidens is rightly named.

I thank you very much for the interesting pamphlets on H. lusitanica you have sent me.

The one of my publications you mean seems me to be Hepatica scandinav. exsic. P. 1. It is, without any exaggeration, the most elegant of its kind, and contains numerous and perfect specimens of 30 species, and will be, Desnutante, be followed next autumn by 2 new parts. But, as it is most elegant, it is also dear, 30 francs per part, besides the freight by post. Please write soon and tell me if you wish





to have it! I sell it only to public  
institutions, not to private men. It  
is not a profiting business, as I lost  
300 francs by the first part, and every one  
of the following will occasion the same  
loss. I think it would be best, if you  
send me a bill in francs, and I  
will sell it here, what is easy,  
especially if written on Rothschild  
or an another of the first firms in  
Paris. I will then send you immedi-  
ately a very fine copy of the work.

Believe me to be, Dear Doctor,

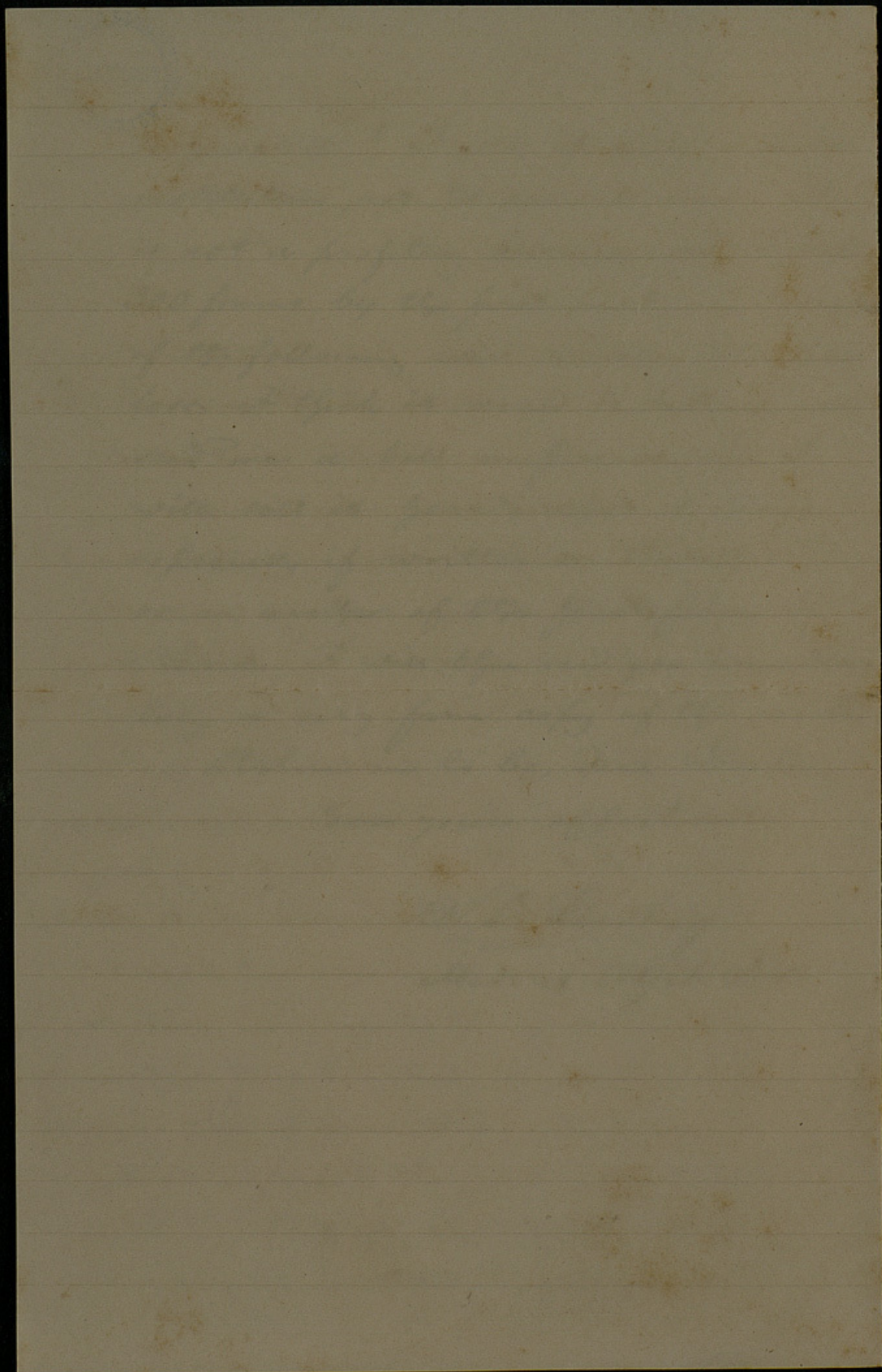
Ever yours affectionate

S. O. Lindberg,  
Med. & Phil. Dr.





'o  
-  
f  
ou  
e  
n  
  
ia-  
le.





Muni veter. d S.O.L.



- n. 178. *Dicranella rubra* = *D. varia*.  
179. *Zygodon viridissimus* ♂.  
180. *Fissidens degipicus*.  
181. *Dicranella varia*.  
182. *Pottia truncata*.  
183. *Orthotrichum tenellum*.  
184. *Dicr. varia*.  
185. *Trichodontium lobosum*.  
186. *Funaria hypomeliza*.  
187. *Barbula aloides*.  
188. *Bryum atropurpureum*.  
189. *Dicr. varia*.  
190. *Barbula aloides*.  
191. *B. nigrivittata* + *Dicranella varia*.  
192. *Alnium undulatum*.  
193. *Weissia viridula*.  
194. *Hypnum* (Ptych.) *myrsinitarum*.  
195. *Funaria* (*Eurostichodon*) *Templetoni*.  
197. " " "  
198. *Weissia viridula* var. *brachifolia*.  
199. *Barbula atrovirens*.  
200. *Fissidens ferrulatus*.  
201. *Weissia viridula* var. *brachifolia*.  
202. *Fissidens bryoides* var. *inclinata*.  
205. *Cataglyphis undulata*.  
206. *Pteroglossopodium laevis*.  
207. *Neckera pumila* var. *longata* Learb.



rami vix pinneti — simplices, longati (ad  
 8 cm. usque), peram & irregulariter ramu-  
 losi; seta perichætium fore duplo superans;  
dentis vix limbatis. — Habitu fere inter cl.  
penultimum & quiescens.

- n. 209. *Phryganeophyllum luccas.*  
 210. *Fissidens polyphyllus* var. *Velwitzi*.  
 211. *Bryum sterile*, videtur *corniculatum*.  
 212. *Tamniaceum alapequorum*  
 213. *Aulacomnium patens*.  
 214. *Grimmia patens*.  
 215. *Hylacomium laevum* (+ *Antitrichia gartlandi*).  
 216. *Philonotis fontana*.  
 217. *Hypnum rusciforme*.  
 218. *Philonotis fontana*.  
 219.         "                 "  
 220. *Hypnum fluitans*.  
 221. *Rhacomitrium lanuginosum*.  
 222. *Hypnum fluitans*.  
 223. *Plagiothecium elegans*.  
 224. *Bartramia pomiformis*.  
 225. *Dicranum Blythii*.  
 226. *Rhacomitrium heterostichum* var.  
 228. *Polytrichum alpinum*.  
 229. *Hypnum rusciforme*.  
 230. *Dicranum Blythii*.  
 231. *Philonotis fontana*.  
 232. *Dicranum Blythii*.  
 233. *Rhacomitrium lanuginosum*.  
 234. *Hypnum rusciforme*.  
 235. *H. fluitans*.



- n. 236. *Bryum alpinum* c. fr.  
 237. *Fontinalis antipyretica*.  
 238. *Tortula ruralis*.  
 239. *Polytrichum alpinum*.  
 240. *Fontinalis antipyretica*.  
 241. *Sphagnum subsecundum*.

Hepaticae

113. *Piccia Huebeneri* Lindemb.  
 114. *P. bifurca* Hoffm.  
 115. *Trichosclera tomentella*.  
 116. *Radula Lindbergii* Gaduly, dioica; ♂ & fr.  
 117. *Piccia bifurca*.  
 118. *Radula Lindbergii*; ♀ ster.  
 119. *Piccia crystallina* - maxima.  
 120. *P. bifurca*.  
 121. *Grimaldia dichotoma*.  
 122. *Piccia bifurca*.  
 123. *Radula Lindbergii*.  
 124. *Anthoceros punctatus*.  
 125. *Cheiloscyphus polyanthos* + Fissidens pusillus.  
 126. *Piccia ciliata*.  
 127. *Fossombronia strobilifera*, indeterminabilis.  
 128. *Piccia Huebeneri*.  
 129. *Aneura pinguis*.  
 130. *Pellia epiphylla*.  
 131. *Piccia glauca*.  
 132. " "  
 133. *Nantia calypogea* (*Calypogea trichom.* B).  
 134. *Jungermannia nana* d. major.





Sarcosyphus Elysi

135. *Nardia emarginata*.  
136. *Fung. crenulata* var.  
137. *Scapania undulata* B. *integrifolia*.  
138. *Fung. crenulata* var.  
139. *Sarcosyphus sphaecletus*.  
140. " "  
141. " " + *Scapania subalpina undulifolia*.  
142. *Scapania undulata* B. *integrifolia*.  
143. *Fung. ventricosa*.  
144. *Fung. nana*.  
145. *Scapania subalpina undulifolia*.  
146. *Sarcosyphus sphaecletus*.  
147. *Scapania undulata*.  
148. *Scap. subalpina undulifolia*.  
193 p.p. *Lejeunea minutissima* vera! (sarcotus unus).  
196. *L. serpyllifolia* c.fr. optima!  
203. *Sarcosyphus emarginatus* B.  
204. " "  
208. *Scapania nemorosa* colv.  
227. *Lophocolea cuspidata* Limpr.  
(= *L. bidentata* capitata Syn. Hep., sed  
non dioica, arctica tamen est!).

Mar. 21/81.

S. O. Lindberg