

Egina celi letarent *ij*

antiph. antiph. *ij* etc. antiph. antiph.

Alleluia *atta* alleluia *satta* alleluia.

Alleluia antiph. alleluia. Quiaque meruisti portare *ij*

Alleluia *atta* *atta* alleluia

Egina celibetant *ij*

antiph. antiph. antiph. *ij* etc. Alleluia *atta* *al*

leluia alleluia Quiaque meruisti portare portare

Alleluia alleluia.

alleluia alleluia



E surrexit sicut dixit ij



Alleluia alleluia alla ii alleluia alleluia.



Qui pro nobis deum ij. alle. sub alle. Val



ii alleluia alla alleluia ij. sub alleluia ij. alle.



Alleluia alleluia sub alle.



E surrexit sicut dixit ij



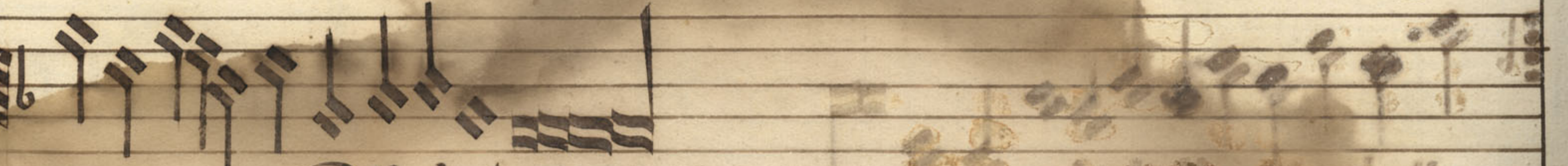
alle. sub alle. Alleluia alleluia alleluia allelu-



qui pro nobis deum ij. alle.



ii. sub alle. alleluia alla alleluia alleluia ij



Alleluia.

Esurrexit sicut dixit *ij*



Alleluia *atta* Alleluia *atta* *atta* *atta* *Orap* no



bis deū *ij*

ij

Alle



luia *atta* Alleluia *atta* *atta* *atta*



alle lu ia



Esurrexit sicut dixit *ij*



Alleluia *atta* Alleluia allelu-



ia *Orap* nobis deū *ij*

Alleluia *atta*



Alleluia

Alleluia

atta

atta

atta



E ginaceli letate
alleluia, Quia quem meruisti portare
Alleluia alleluia
ia alla:~



E ginaceli letate
alleluia, Quia quem meruisti portare
Alleluia alleluia
alleluia, Quia quem meruisti portare
Alleluia
alla, alla, alla, alla:~

Egina celitave **Allelu-**
 ia **atta** **atta** **atta** **Quia** quē meruisti porta-
 re **ij** **atta** **ij**
Alleluia **ij** **atta** **atta** **ij**
atta **atta** **atta** **atta** **atta**

Egina celitave **Al-**
 leluia **ij** **atta** **alleluia.** **Quia** meruisti
 portare **ij** **Quia**
 quē meruisti portare **Alleluia** **atta** **ij**
alleluia **ij** **alleluia:**

E surrexit sicut dixit **Alle-**
luia **Allelu** ia **Orapronobis deū ij** **Al-**
leluia, **atta, ij ij** **atta Allelu** ia:~

E surrexit sicut dixit **Alleluia** **atta ij**
ij alleluia Orapronobis deū ij
Orapronobis deū ij Alleluia ij
alleluia **atta ij** **atta alleluia**



Esurrexit sicut dixit **Atta.**



Alleluia **Atta** **O**ra pro nobis **D**eum



Alleluia **ij**



ij **alleluia** **ij** **atta:**



Esurrexit sicut dixit. **R**esurrexit sicut dixit **Atta.**



Ora pro nobis **D**eum **ij**



Alleluia **ij** **atta** **atta** **atta** **ij**



Alleluia **atta**



Rocul recedant sonia ij



Et noctiu phantasmata, hosteq nostrum hosteq nrz com-



prime ne polluatur corpora ij



corpora:--



Rocul recedant sonia ij



Et noctiu phantasmata ij



hosteq nostru com prime ne polluatur corpora ij



ne polluatur corpora:--



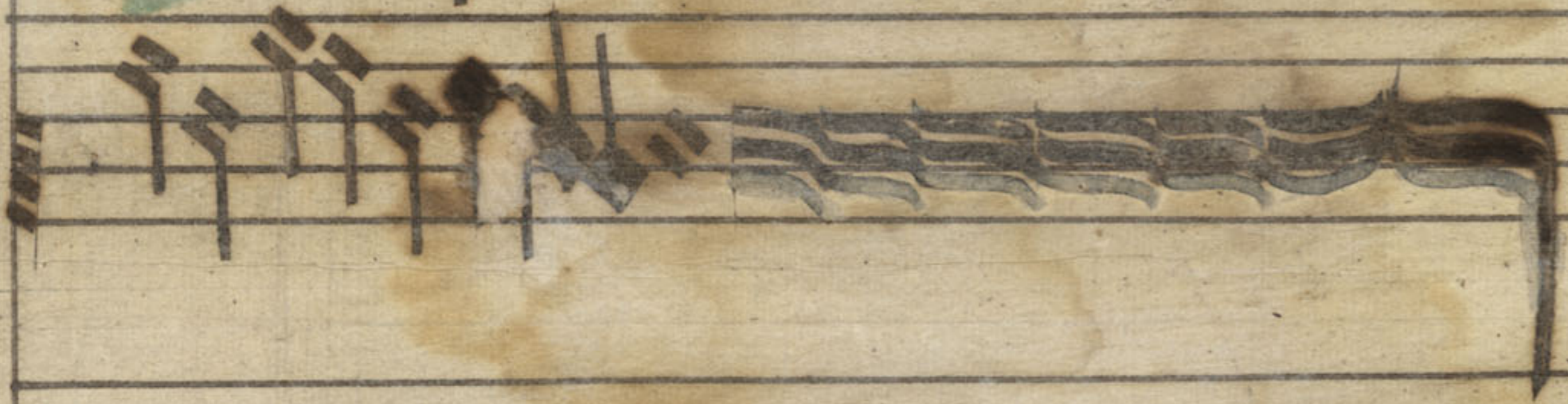
Rocul recedant sōmia ij Et



noctiū phantasmata ij hostēq; nostrū comprime



ne polluānt corpora ij ij



Rocul recedant somnia Et noctiū phantasmata ij



et noctiū phantasmata hostēq; nostrū cōprime



ne polluātur corpora ij ne polluāntur cor =



pora : : :

Handwritten musical notation on a five-line staff. The notes are dark ink, and there is a red mark on the right side of the staff. The paper is aged and stained.

Handwritten musical notation on a five-line staff, continuing from the previous system. The notes are dark ink, and the paper shows signs of wear and discoloration.

Handwritten musical notation on a five-line staff. The notes are dark ink, and the paper is heavily stained and discolored.

Handwritten musical notation on a five-line staff. The notes are dark ink, and the paper is heavily stained and discolored.

Handwritten musical notation on a five-line staff. The notes are dark ink, and the paper is heavily stained and discolored.

Handwritten musical notation on a five-line staff. The notes are dark ink, and the paper is heavily stained and discolored.

Handwritten musical notation on a five-line staff. The notes are dark ink, and the paper is heavily stained and discolored.

Handwritten musical notation on a five-line staff. The notes are dark ink, and the paper is heavily stained and discolored.

Handwritten musical notation on a five-line staff. The notes are dark ink, and the paper is heavily stained and discolored.

Handwritten musical notation on a five-line staff. The notes are dark ink, and the paper is heavily stained and discolored.

Handwritten musical notation on a five-line staff. The notes are dark ink, and the paper is heavily stained and discolored.

Handwritten musical notation on a five-line staff. The notes are dark ink, and the paper is heavily stained and discolored.

Handwritten musical notation on a five-line staff. The notes are dark ink, and the paper is heavily stained and discolored.

