

+

I.  
6

M. J.  
166

784.5 = 690 (04) " 1621"

M.I

166

M.I  
166

M. I. 166

# IN PROCESSIONIBVS PURIFICATIONIS BEATÆ

Mariæ Virginis, & in Dominica Palmarum.

Mariæ Virginis, & in Dominica Palmarum.



CONIMBRICÆ.

*Cum facultate Inquisitorum, & Ordinarij.*

Typis Didaci Gomez de Loureyro, anno 1621

IN PROGRESSIO

NIBVS PARIETI

CATIONIS BEATAE

MARIE VIRGINIS & IN DO-

MINICA PALATINIS



COMITIBUS

Typis ... anno 1851



# AD PROCESSIONEM

INFESTO PURIFICATIONIS

BEATÆ VIRGINIS

M A R I Æ.



Dor na tha la-



mum tuam Si ca:



& susci pe regem Chri stum: ample-



ctere Mari am, quæ est cœle stis porta:

A 2 ipsa

Processio in die Purificationis



ip sa e nim portat Regem glo ri-



æ no ni lu mi nis: sub si stit



Vir go, ad du cens ma ni bus



fi li um, an te Lu ci ferum ge-



ni tum: quem ac ci piens Sy meon in



vl nas su as, præ di ca uit

popu.



po pulis, Dominum e um es se



vi tæ, & mor tis, & Sal na to-



rem mun di.

Alia Anti-  
phona



Es pon sum ac ce pit



Sy me on à Spi ri tu San cto,



non vi su rum se mortem, ni si

A 3 vide-

## Processio in die Purificationis



vi de ret Christum Do mi-



ni: & cam in da ce rent pu e-



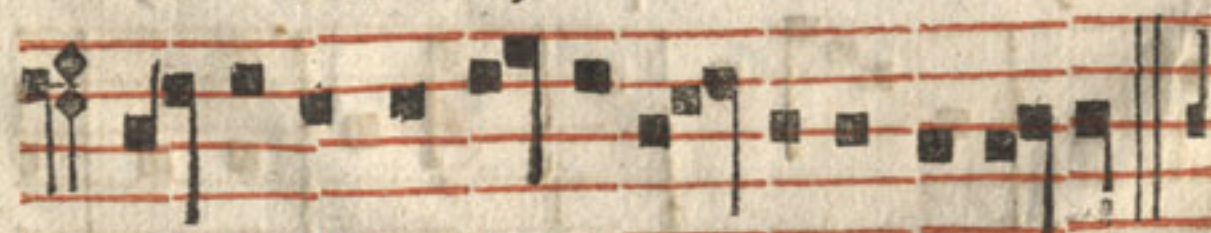
rum in templum, ac ce pit e-



um in vl nas su as: & bene-



di xit Deum, & di xit: Nunc di-



mit tis seruum tu um Do mi ne, in pa ce:

*Vers.*

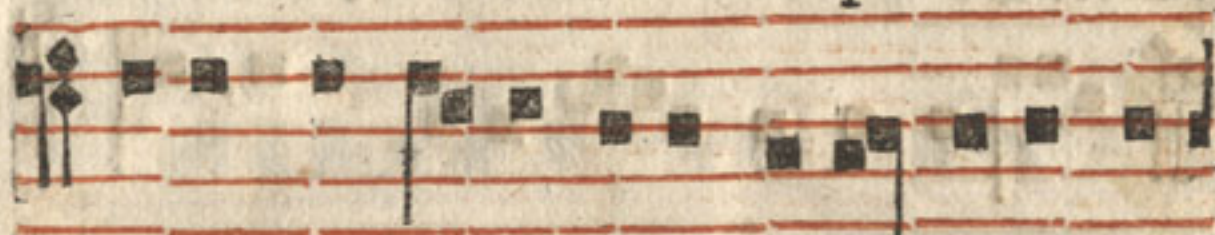


Beatae Virginis Mariae.

7



**Vers.** Cum in du ce rent pu e ram



Ie sum pa ren tes e ius, vt fa ce rent se-



can dum con su e tu di nem le gis



pro e o: ip se ac ce pit e um in



vl nas su as.

**Et ingrediendo Ecclesiam cantantur  
sequens Responsorium.**

Obtu-

## Processio in die Purificationis



B tu le runt pro e o



Do mi no par tur tarum: ant du-



os pa los colum ba rum.



*P.* Si cut scrip tum est in



le ge Do mi ni, *Vers.*



Postquam im plet i sunt di es pur-  
ga

Beatae Virginis Mariae.



ga ti o nis Ma ri æ se cundum legem



Mo y si, tu le rant il lum in Hieru sa lem:



ut si sterent e um Do mino. P. Sicut.



*Vers.* Glo ri a Pa tri, & Fi-

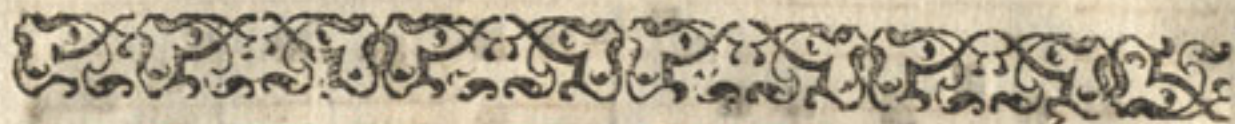


li o, & Spi ri tu i San cto.



P. Si cut

B I N



# IN PROCESSIONE

## NEM IN DIE

### PALMARVM.

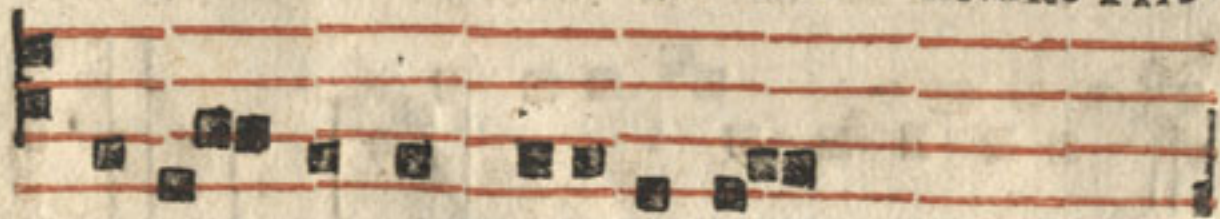
#### Antihona.



Um appropinqua-



ret Dominus Hie-



roso ly mam mi sit du os ex dis-



ci pulis suis dicens. I te in castellum,  
quod



quod est con tra vos: & inveni e tis



pullam a si ne alli ga tum super



quem nullas ho minum ce dit: sol-



ni te, & ad du ci te mihi Si quis vos

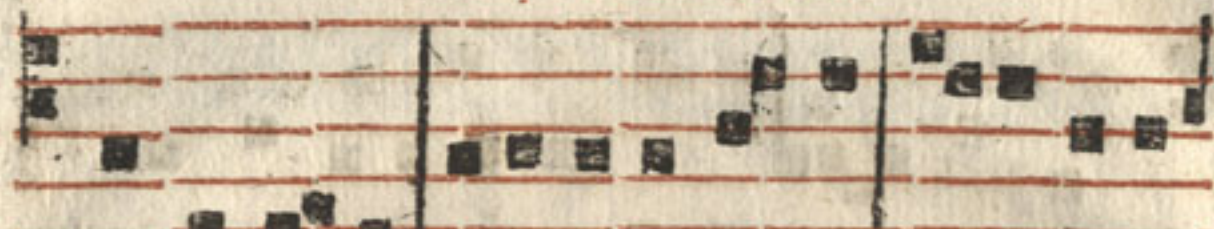


in ter ro ga ne rit, di ci te: o pus

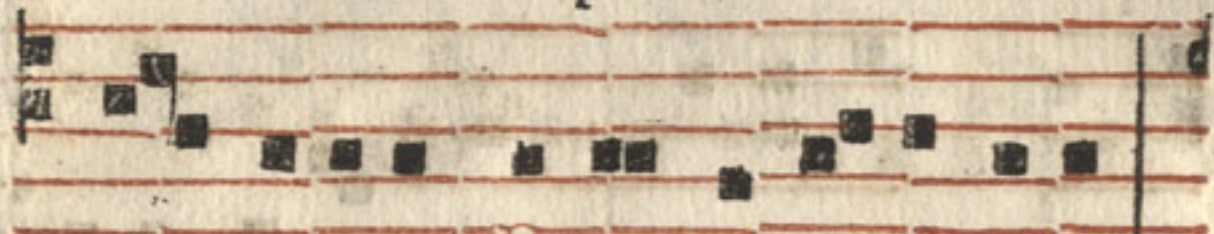


Do mi ni est, Sol nen tes ad du xe-

## Ad processionem



runt ad Iesum & imposuerunt illi vesti-



menta sua, & sedit super eam.



Alij expandebant vestimenta sua



in via: Alij Ramos de arboribus



sternebant, & qui sequebantur clamabant.



O sanna, benedictus, qui venit in nomine

Domi.



Domini: Be ne dic tum regnū patris nos-



tri David: O sanna in ex cel sis mise re re



Alia An-  
tiphona.

nobis fi li David.



Um au dis set po pulus, quia



Je sus ve nit Hie ro so lymam ac ce perunt



Ramos pal ma runt, & ex i e runt e i

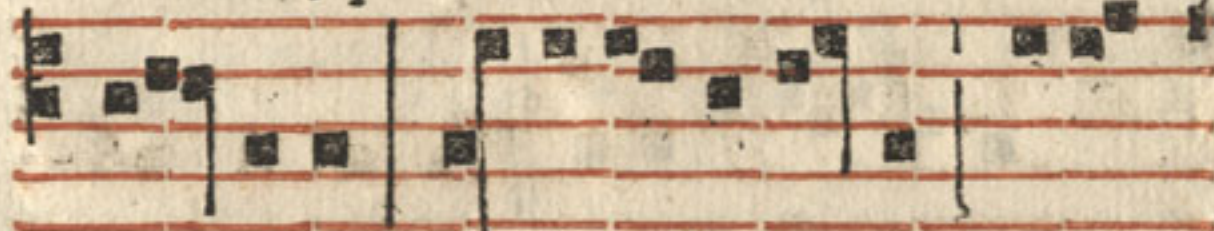
## Ad Processionem



ob uiam, & clama bāt pu e ri, di centes.



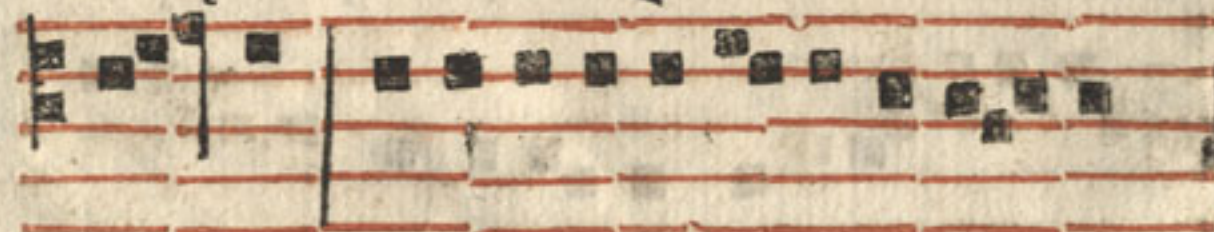
Hic est, qui ven tu rus est in sa lu tem



po pu li. Hic est sa lus nostra, & re-



demptio Is ra el. Quātus est is te, cu i



throni, & domi nati o nes oc cur runt:



noli ti mere, fi li a Si on: ecce Rex

tus





tu us ve nit tibi se dēs super pullum



a si næ: si cut scri ptum est. Sal-



ue, Rex, fabri ca tor mun di qui ve-

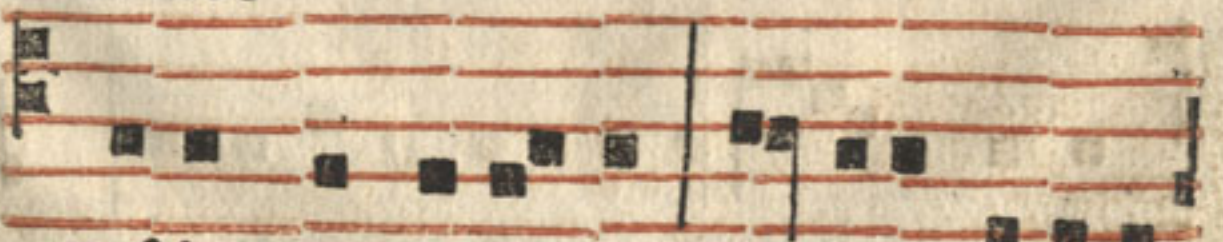


ni sti re di me re nos.

*Alia Anti-  
phona*



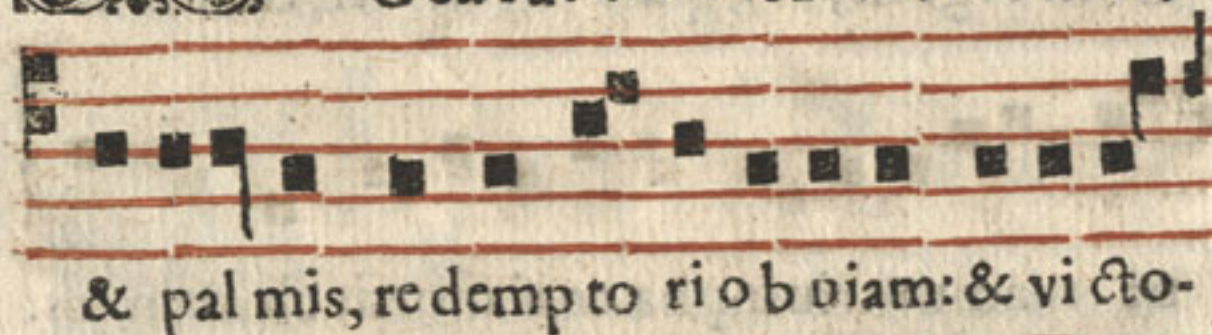
N te sex di es so len nis



Paschæ quando ve nit Do minus in ci vi-

tatem

ta tcm Hierusa lem occurrerunt e i  
 pu e ri, & in ma nibus portabant ra-  
 mos pal ma rum: & cla mabant vo ce  
 magna di cen tes O san na in ex  
 cel sis: Be ne di ctus, qui ve nis ti  
 in multi tu di ne mise ri cor di æ  
 tuæ





la: O fan na in ex cel fis. *Versus.*



Cum Age lis, & pu e ris fi de les in-



ne niamur triumpha to ri mortis cla man tes:



O fan na in ex cel fis.

*Alia An-  
tiphona.*



Ur ba mul ta quæ conue ne rat ad



diem festum cla ma bat Do mi no: Be-  
nedi-



ne di ctus qui ve nit in no mi ne Domi-

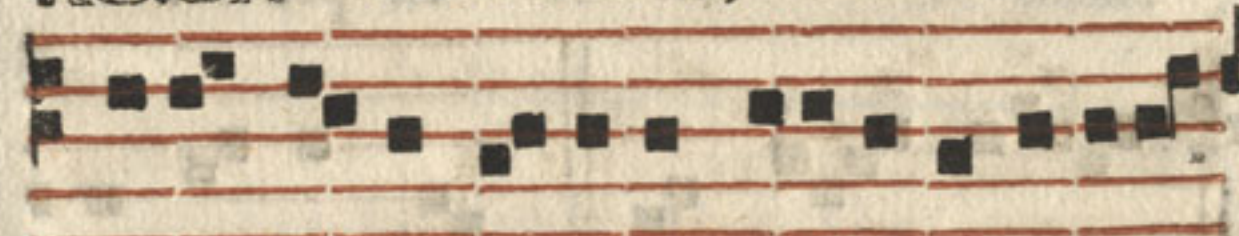


ni: O san na in excel sis.

Versus.



Glo ri a la us, & ho nor ti bi



sit Rex Christe Redēptor: cu i pa e ri le



de cus prōpsit. O sanna pium:

Postea in-  
trat proces-  
sio Ecclesiā  
cantando.



I N gre di en te Do mi no in

C 2

San-

## Ad processionem



Sanctam Ci u i ta tem



Hæbræ o rum pu e ri Resur-



re cti o nem vi tæ pro nun-



ci o an tes. Cum ra mis pal-



ma rum: O fanna clama-



bat in ex ce lsis.

Vers.

Cum



Cum que au di sset, quia Iesus ve nit Hic-



ro so ly mam e xi e runt o-



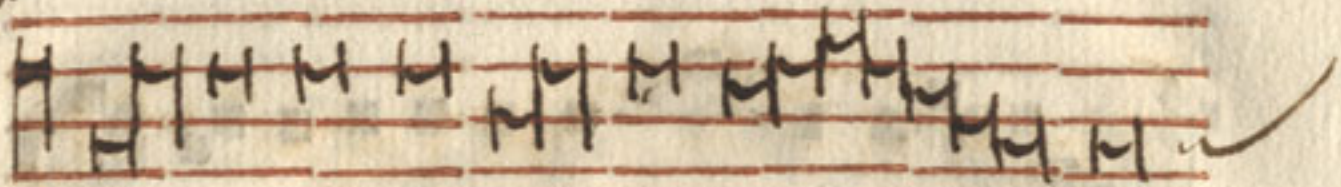
bui a m e i s P. Cum.

L A V S D E O.

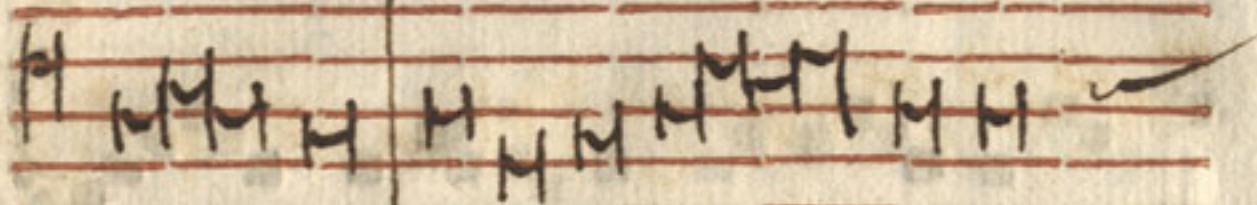
Soror Eugenia à Regibus excudi fecit.



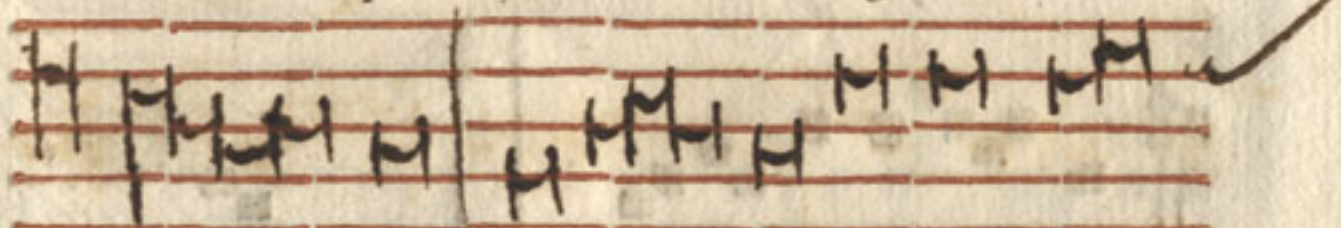
L. 258



Cre do quod Re demp tor me - u



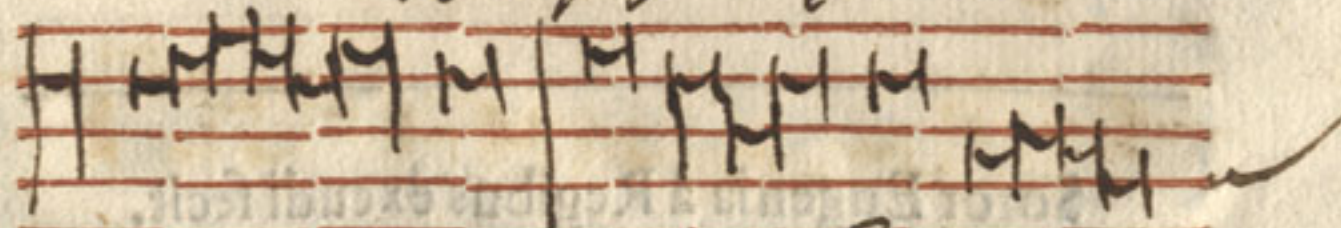
ni - uis, & in no uis si me



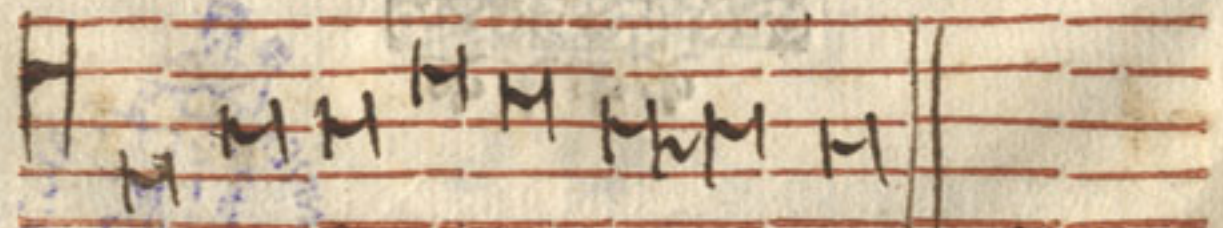
Di - e, de ter ra surrectu



xy sum p. q. in car ne

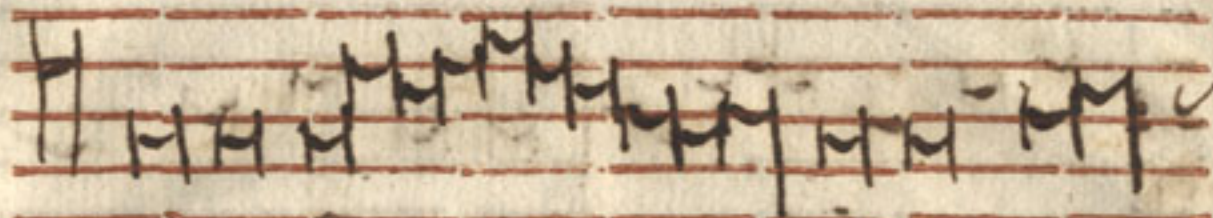


me - a vide bo de

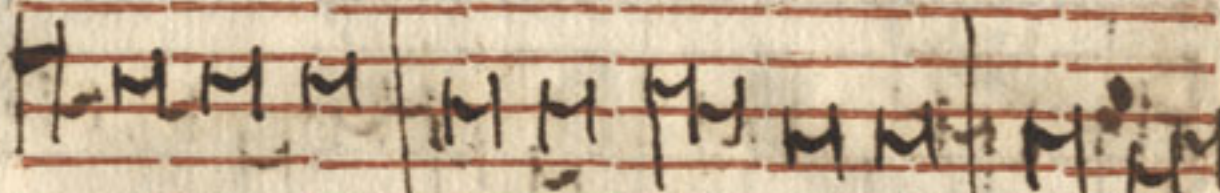


um salua ro rem me um, &.

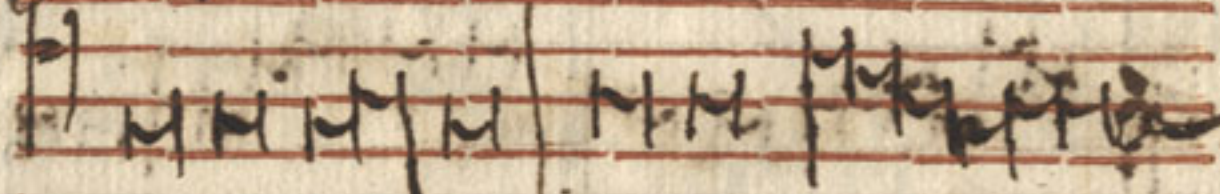




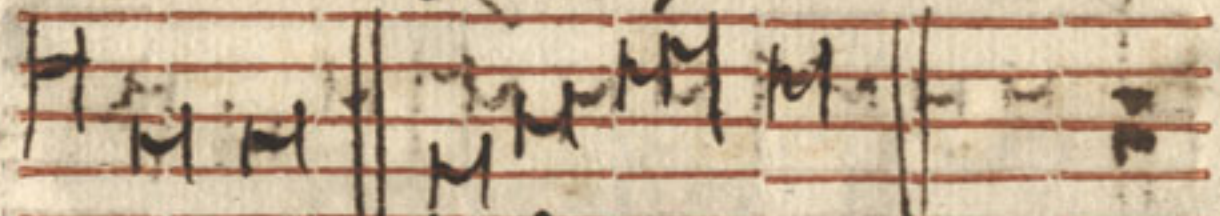
Quam visu - rum - rursus e -



go ipse & non a. lras & o.

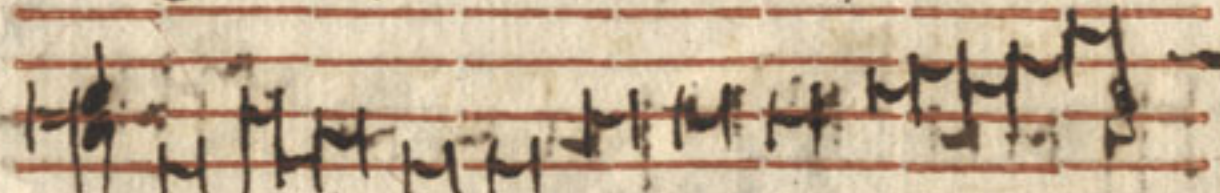


ca. no. 2. Compositu

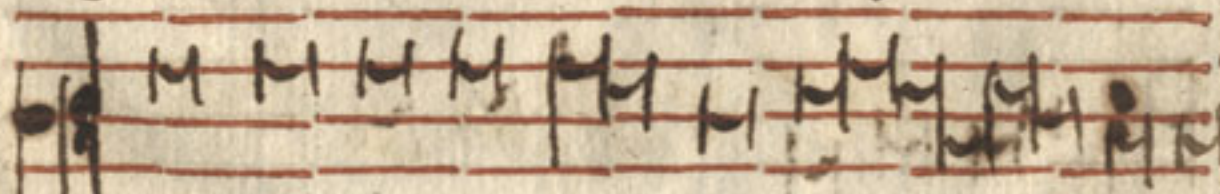


vi. sunt p. 2. in tunc

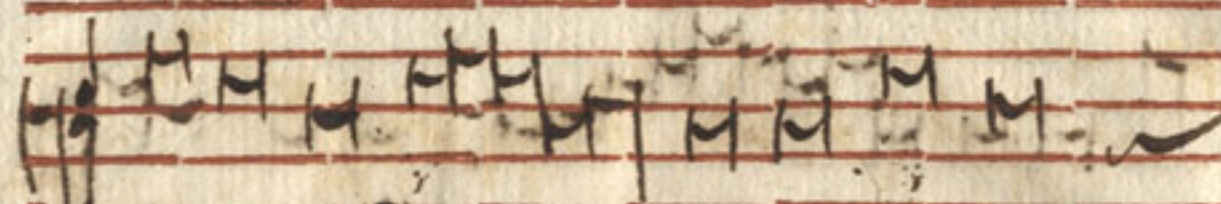
20




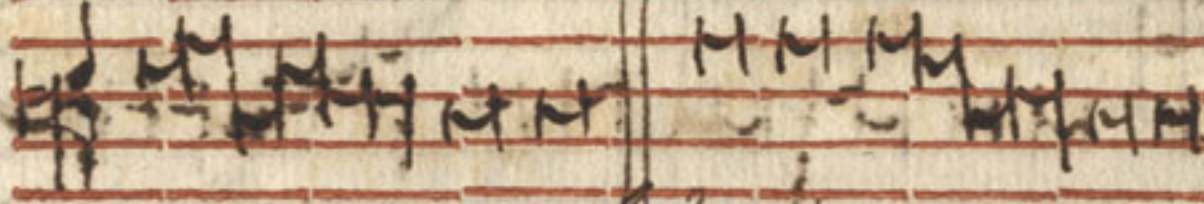
Qui Sa. Sanna Desperit

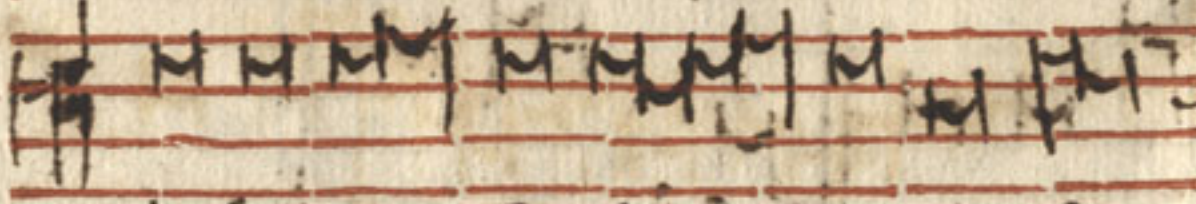


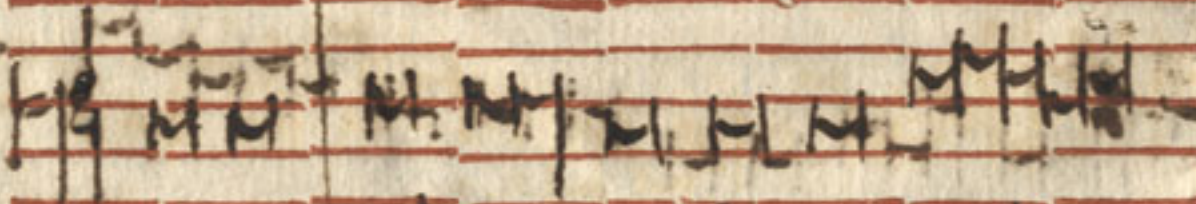
Si amon men 2. fe. fidum

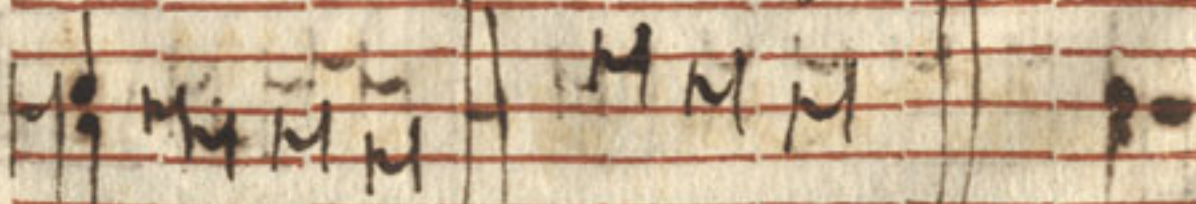
#   
g. En ay do - mine Do na

  
De qui am Et so ana in del

  
gen si a. Et qui ventu rus e

  
indica - re vi - vos et mor

  
tuos Et se cu lum per y

  
nam g. En ay #

Handwritten musical notation on a five-line staff, consisting of several measures of music with notes and stems.

Do - mi - ne - quare - re - nos

Handwritten musical notation on a five-line staff, consisting of several measures of music with notes and stems.

judica - re - ven - tam - tu - am

Handwritten musical notation on a five-line staff, consisting of several measures of music with notes and stems.

re - ce - dit - tu - a - dam - a - mul - tu - um

Handwritten musical notation on a five-line staff, consisting of several measures of music with notes and stems.

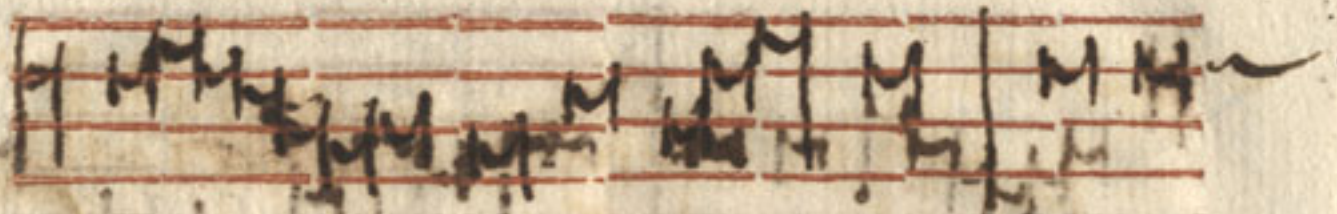
quon - iam - quia - pec -

Handwritten musical notation on a five-line staff, consisting of several measures of music with notes and stems.

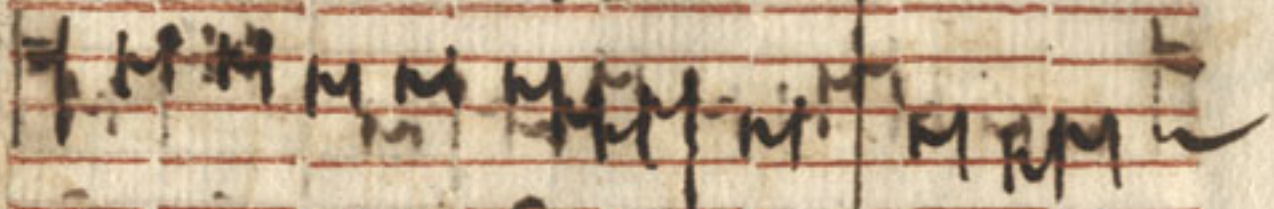
ca - tum - in - vi - tam

Handwritten musical notation on a five-line staff, consisting of several measures of music with notes and stems.

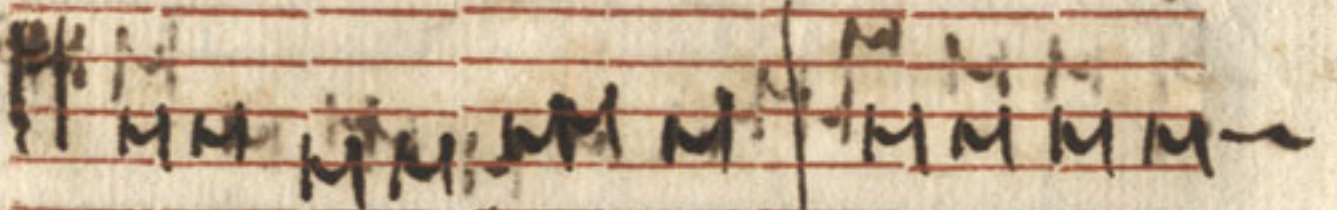
et - in - vi - tam - et - in - vi - tam



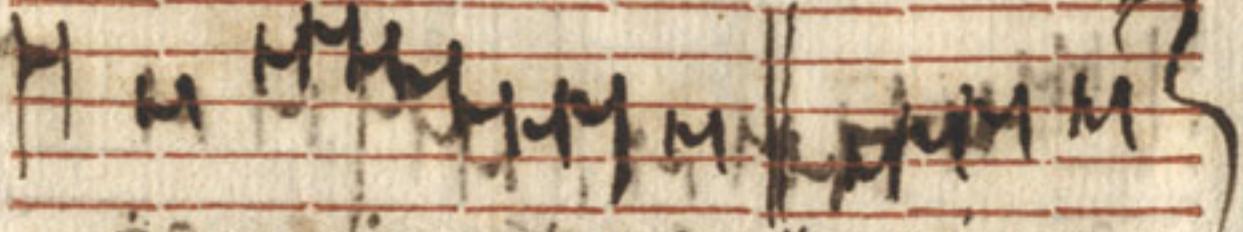
Deus et unigenitus vero et  
22m



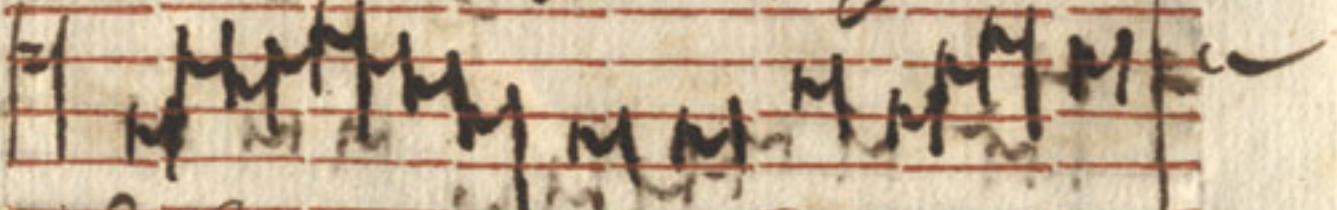
Deus et unigenitus vero et  
22m



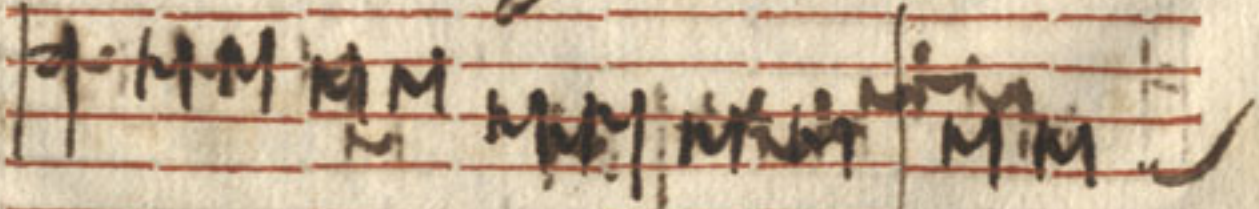
Deus et unigenitus vero et  
22m



Deus et unigenitus vero et  
22m



Deus et unigenitus vero et  
22m



Deus et unigenitus vero et  
22m

Handwritten musical notation on a five-line staff with red lines. The notes are represented by vertical stems with various flags and beams. Below the staff, the Latin text "res pectus lactat" is written in a cursive hand.

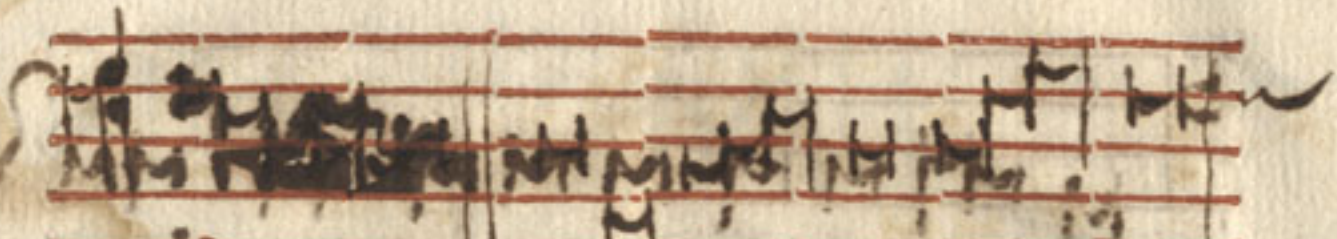
Handwritten musical notation on a five-line staff with red lines. The notes are represented by vertical stems with various flags and beams. Below the staff, the Latin text "regni" is written in a cursive hand.

50. Handwritten musical notation on a five-line staff with red lines. The notes are represented by vertical stems with various flags and beams. Below the staff, the Latin text "in mishi do mite - gna" is written in a cursive hand.

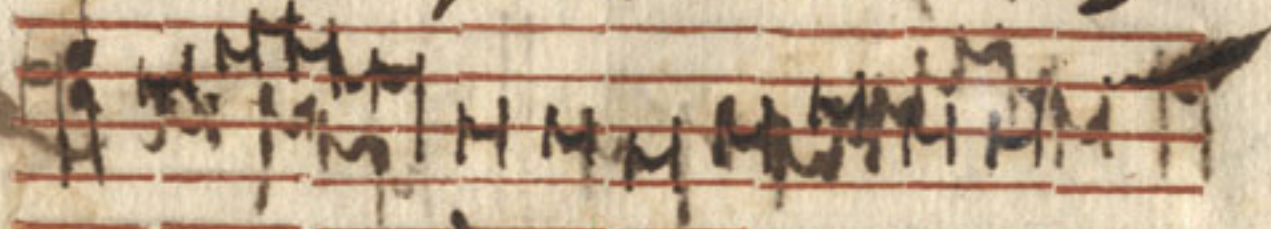
Handwritten musical notation on a five-line staff with red lines. The notes are represented by vertical stems with various flags and beams. Below the staff, the Latin text "speciamus ni mi xit di ota ne" is written in a cursive hand.

Handwritten musical notation on a five-line staff with red lines. The notes are represented by vertical stems with various flags and beams. Below the staff, the Latin text "quid factum niter ubi" is written in a cursive hand.

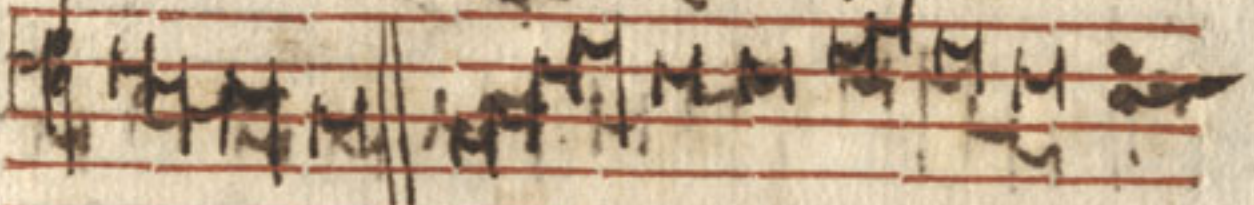
Handwritten musical notation on a five-line staff with red lines. The notes are represented by vertical stems with various flags and beams. Below the staff, the Latin text "fugiam nisi ad te deus" is written in a cursive hand.



De us pater omnipotens



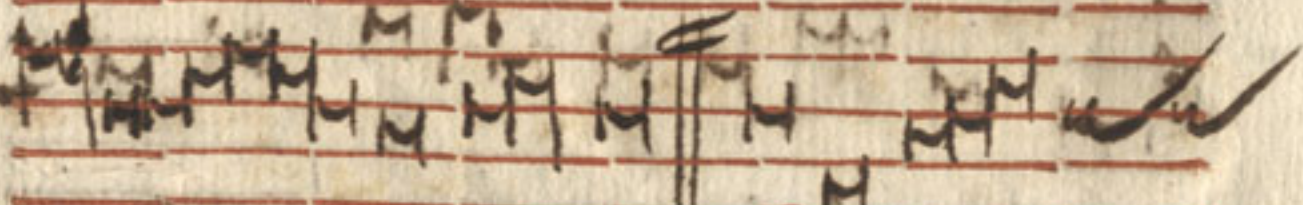
omnis notus in nobis



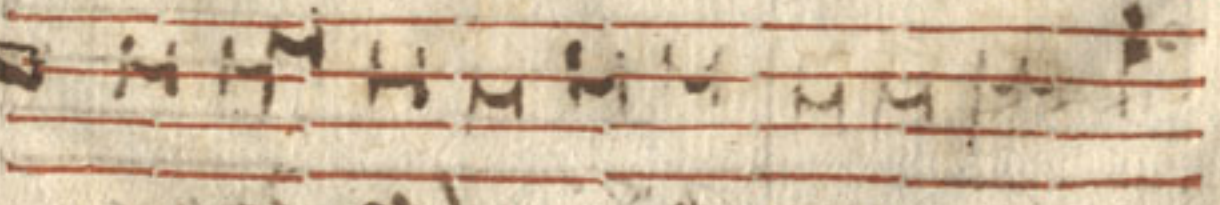
Adi - gite An - ima mea



in vo - ca - ce + Salve sed tu domine

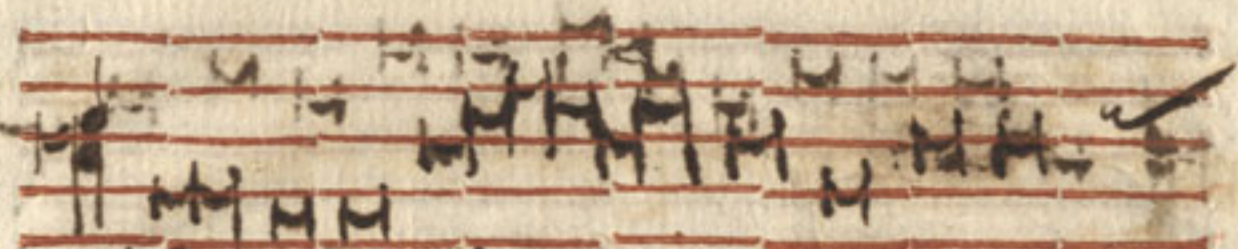


facis

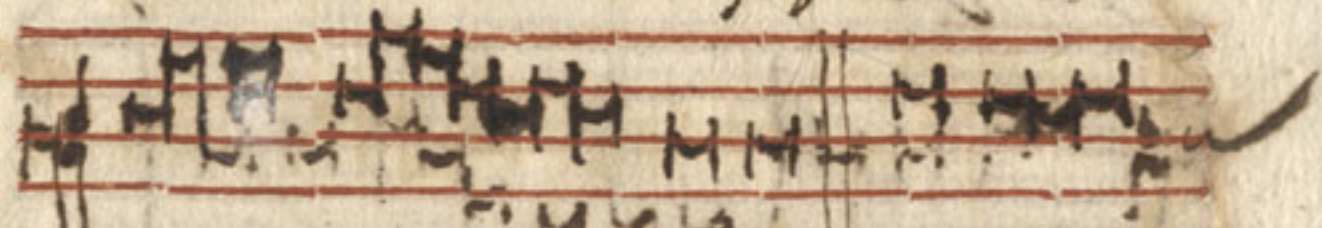


Handwritten text at the bottom of the page, possibly a signature or page number, which is mostly illegible due to fading and bleed-through.

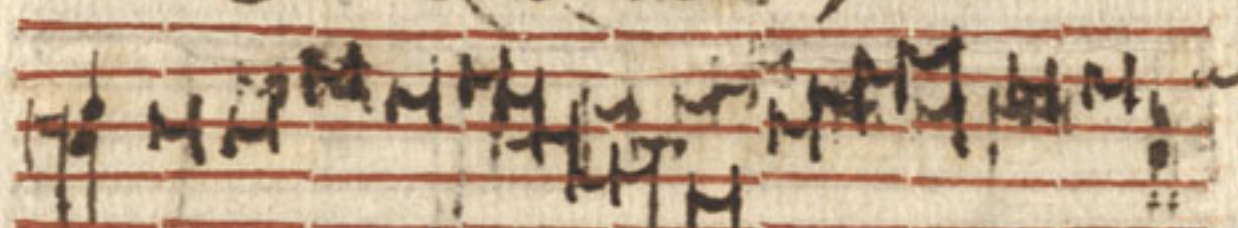
60  
mg



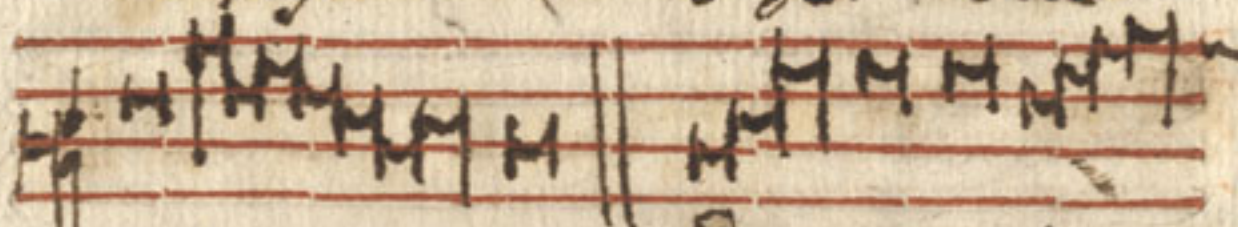
He recorde viri peccata



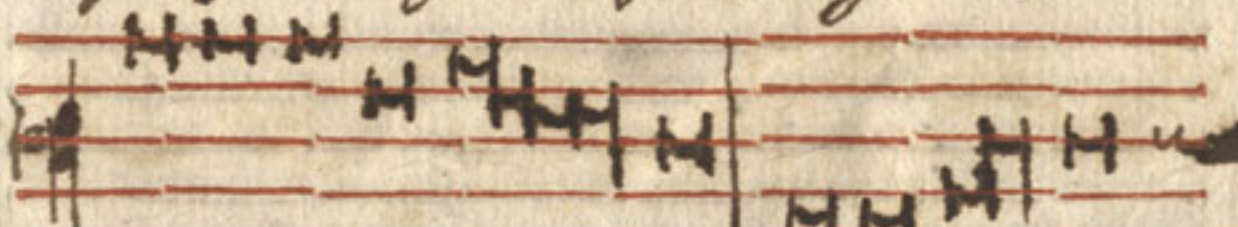
mea do quoniam peccavimus



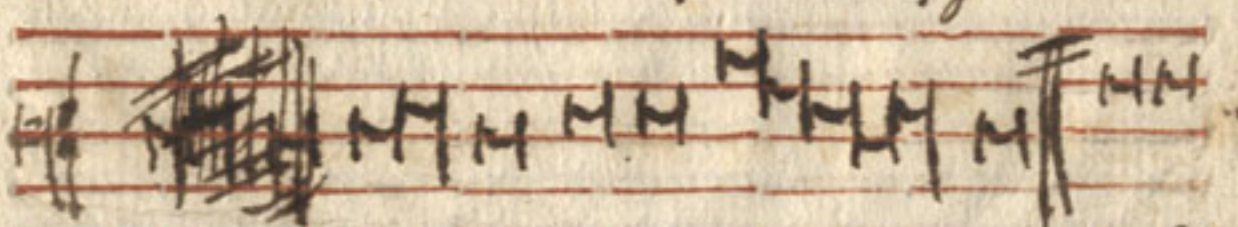
peccata de re sua non



perj - grem qd dirigo do



mine deus me us in conspectu



quo ~~quo~~ ~~quo~~ niam me am, p. d. u. u. u. u. u.



Handwritten musical notation on a five-line staff, consisting of several groups of 'M' characters and some illegible symbols.

Requiem e ter non dona ei

Handwritten musical notation on a five-line staff, consisting of several groups of 'M' characters and some illegible symbols.

Domine ex tunc per se sua

Handwritten musical notation on a five-line staff, consisting of several groups of 'M' characters and some illegible symbols.

lucet e - y s. dum.

Handwritten musical notation on a five-line staff, consisting of several groups of 'M' characters and some illegible symbols.

Handwritten musical notation on a five-line staff, consisting of several groups of 'M' characters and some illegible symbols.

Handwritten musical notation on a five-line staff, consisting of several groups of 'M' characters and some illegible symbols.

Handwritten musical notation on a five-line staff, consisting of several groups of 'M' characters and some illegible symbols.

Handwritten musical notation on a five-line staff, consisting of several groups of 'M' characters and some illegible symbols.

Handwritten musical notation on a five-line staff, consisting of several groups of 'M' characters and some illegible symbols.

Handwritten musical notation on a five-line staff, consisting of several groups of 'M' characters and some illegible symbols.

Handwritten musical notation on a five-line staff, consisting of several groups of 'M' characters and some illegible symbols.

Handwritten musical notation on a five-line staff, consisting of several groups of 'M' characters and some illegible symbols.

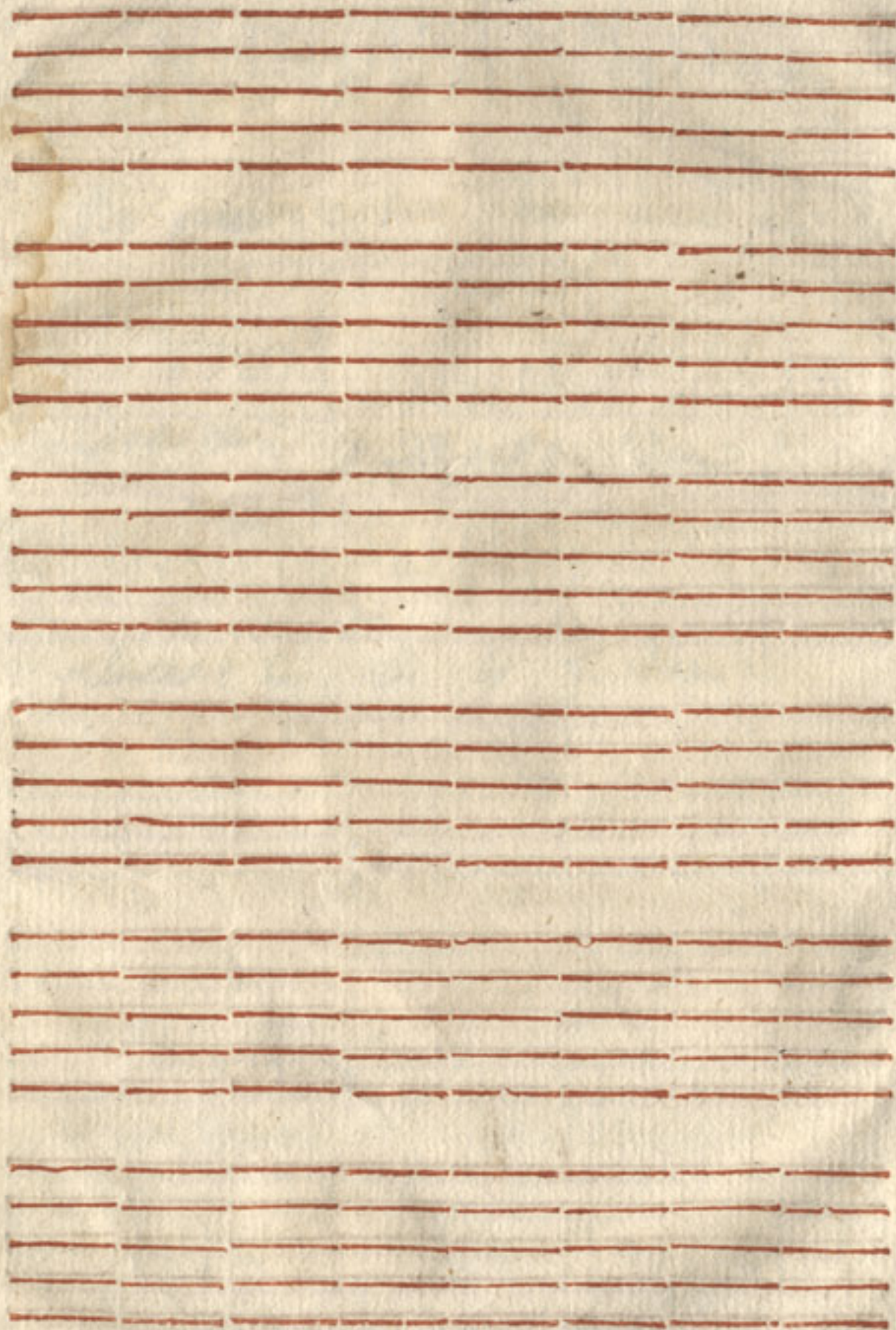
Handwritten musical notation on a five-line staff, consisting of several groups of 'M' characters and some illegible symbols.

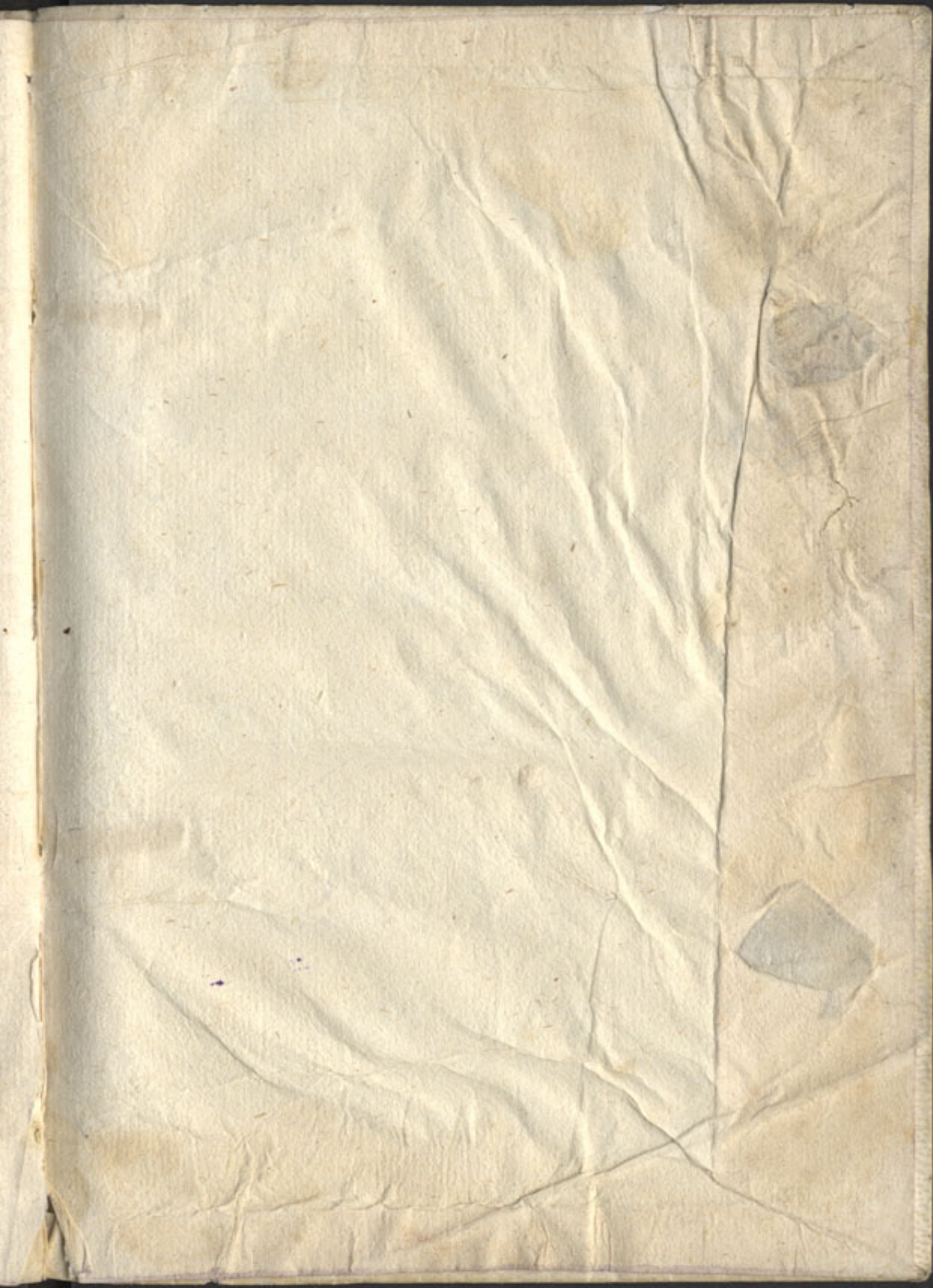




Blank manuscript page with red horizontal lines.

2





M  
1

