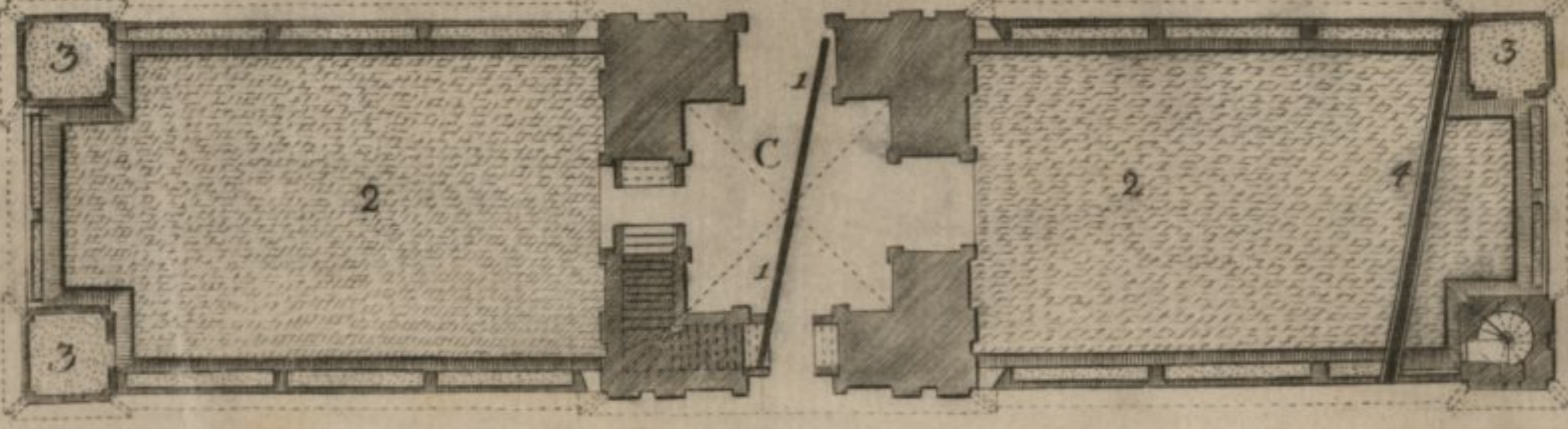
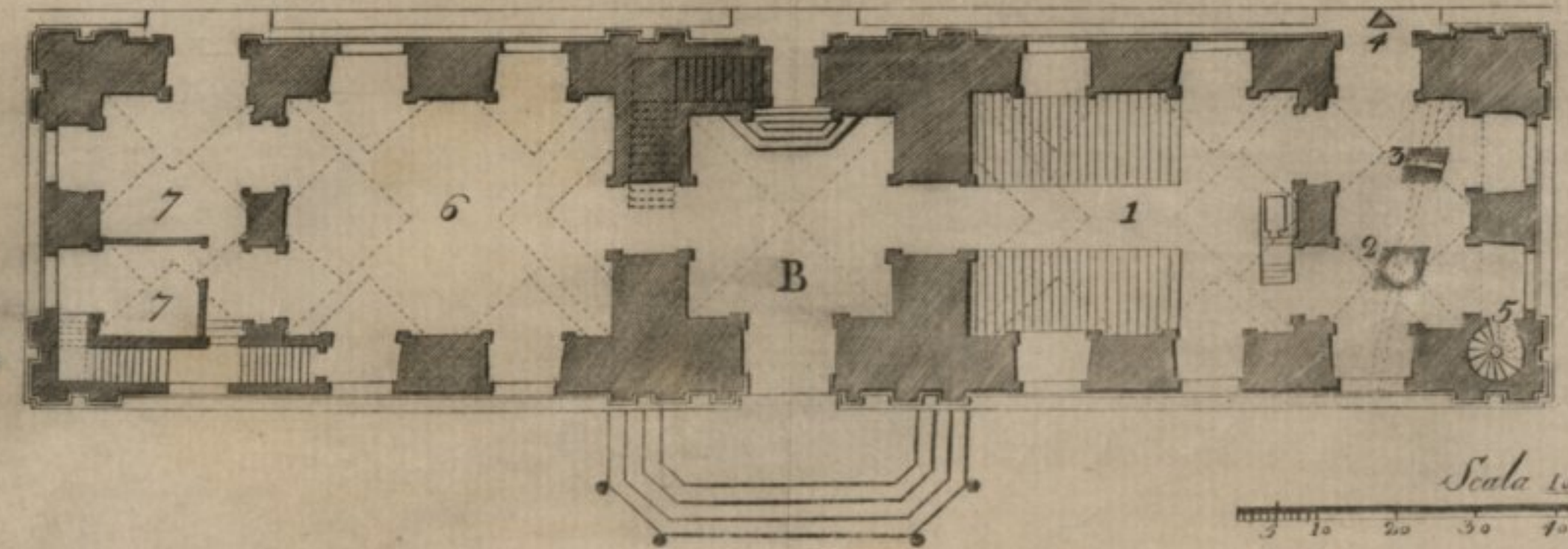
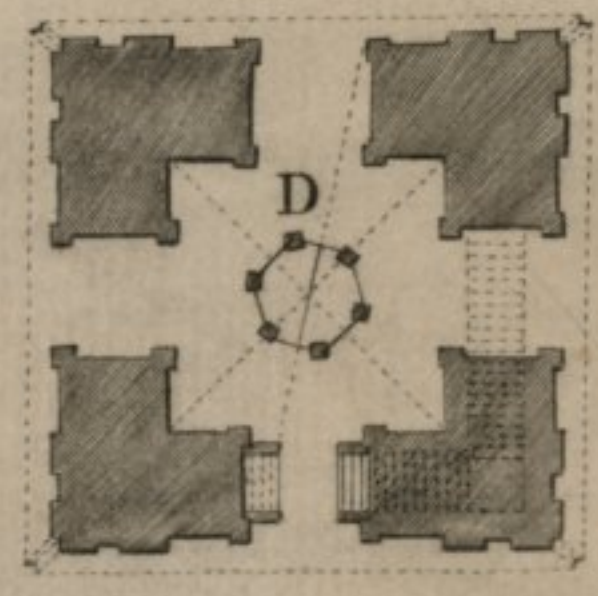
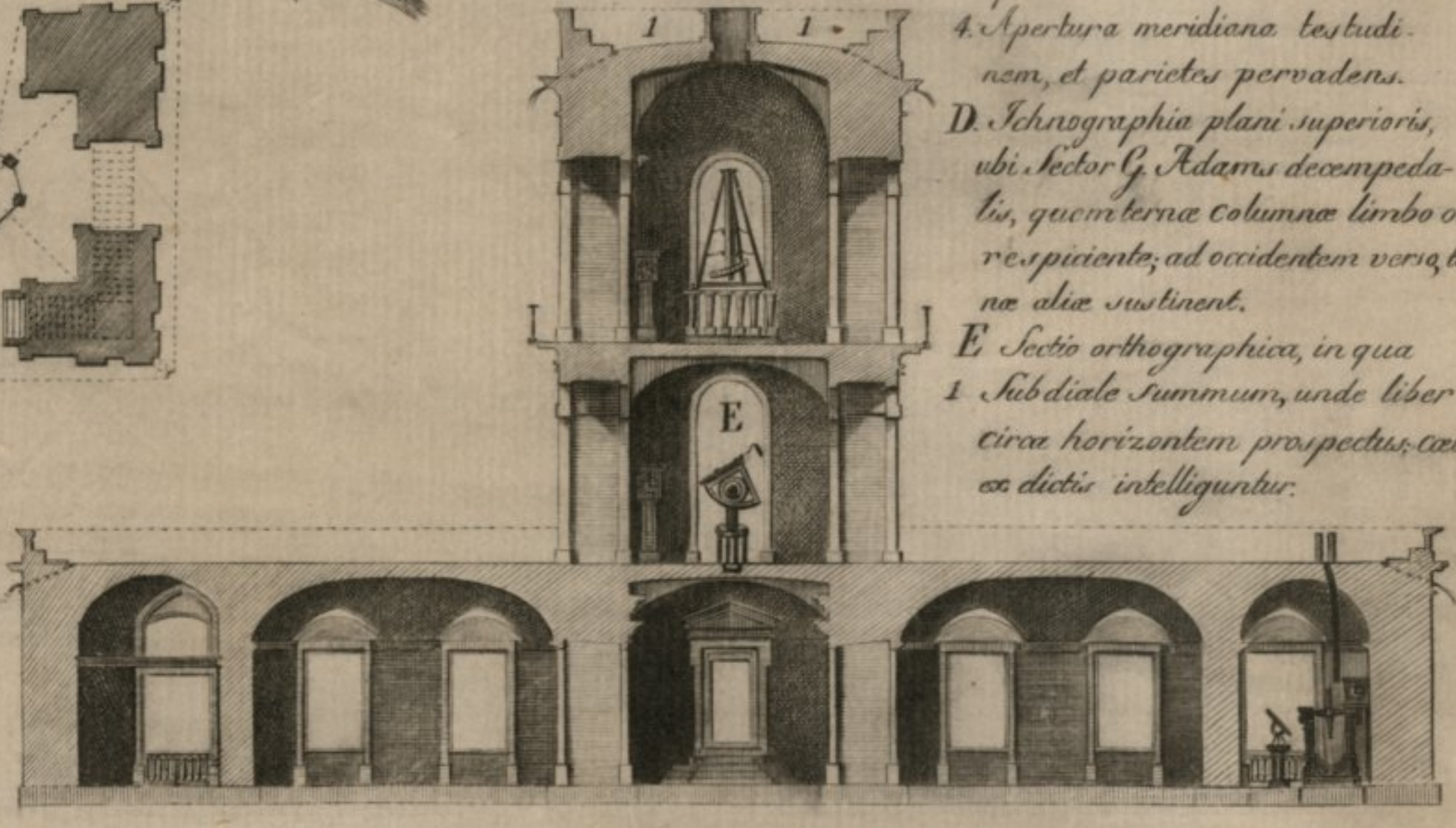
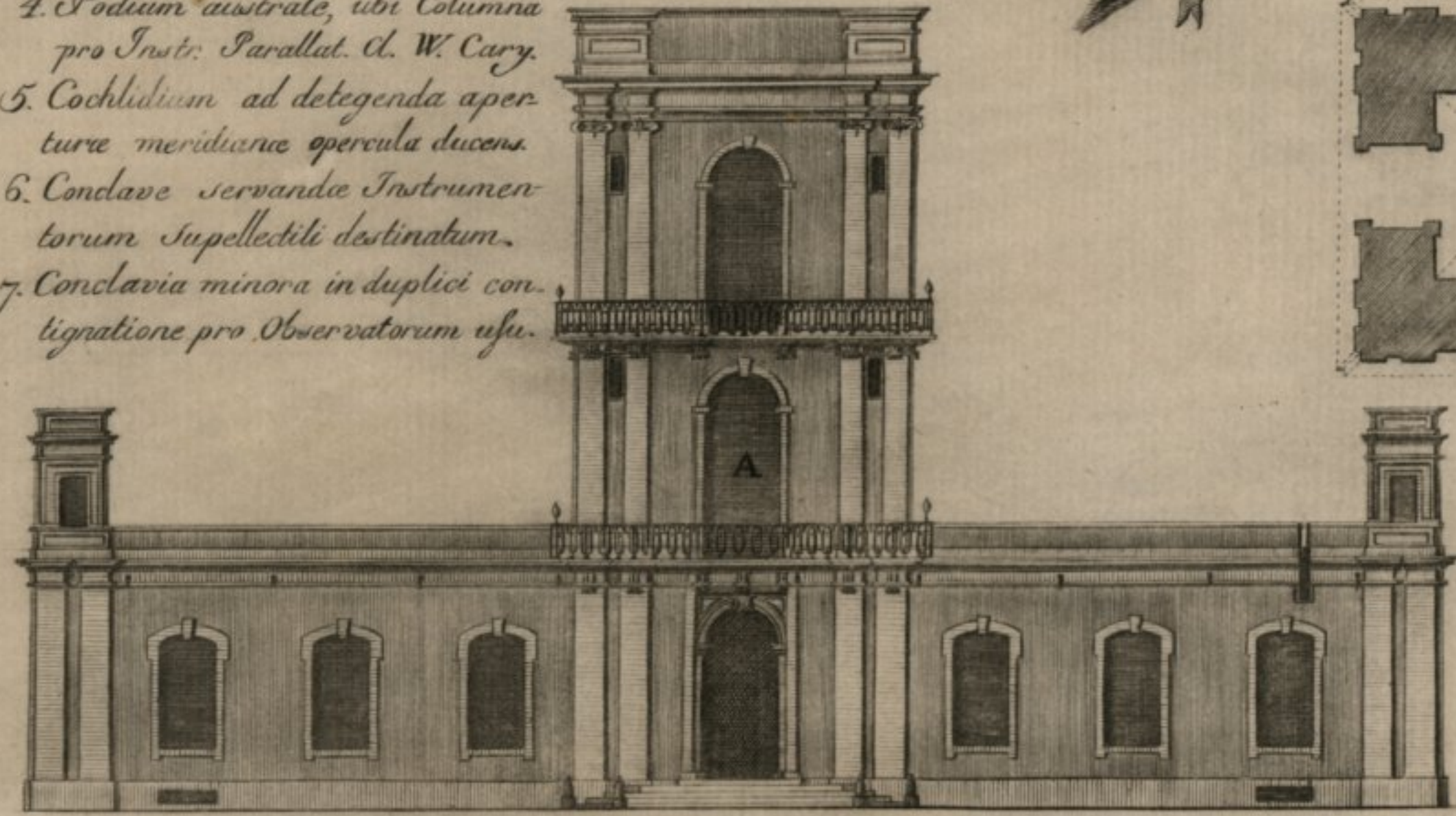


- A. Frontis orthographia e regione
Archigymnasii Academici.*
- B. Ichographia prioris plani. In quo*
- 1. Gymnasium Astronomicum.*
 - 2. Fundamentum Quadranti Marali
destinatum, ubi interim Quadrans
mobilis tripodatus, opus Troughtoni
absolutissimum.*
 - 3. Fundamentum pro Telescopio Me-
ridiano achromatico Cel. Pollondi.*
 - 4. Podium australe, ubi Columna
pro Instr. Parallel. G. W. Cary.*
 - 5. Cochlidium ad detegenda aper-
tura meridiana opercula ducens.*
 - 6. Conclave servandae Instrumen-
torum Suppellectili destinatum.*
 - 7. Conclavia minora in duplici con-
iugatione pro Observatorum usu.*



- C. Ichographia alterius plani, u-
bi Specula communis. In qua*
- 1. Filum metallicum tenuissimum
in canaliculo lapideo secundum me-
ridiani ductum, ad excipiendam Sols
imaginem per foramen laminae ad in-
cumbam fenestrae 20 palmos altam
ferminatae transmissam.*
 - 2. Subdialia hinc inde Observato-
ribus patentia.*
 - 3. Specula minores.*
 - 4. Apertura meridiana testudi-
nem, et parietes pervadens.*
- D. Ichographia plani superioris,
ubi Sector G. Adams decempeda-
lis, quem ternae columnae limbo ortu
respiciente, ad occidentem versus ter-
nae aliae sustinent.*
- E. Sectio orthographica, in qua*
- 1. Subdiale summum, unde liber
circa horizontem prospectus, caetera
ex dictis intelliguntur.*



Scala 100 palmorum

Curante Josepho Monteiro da Rocha.